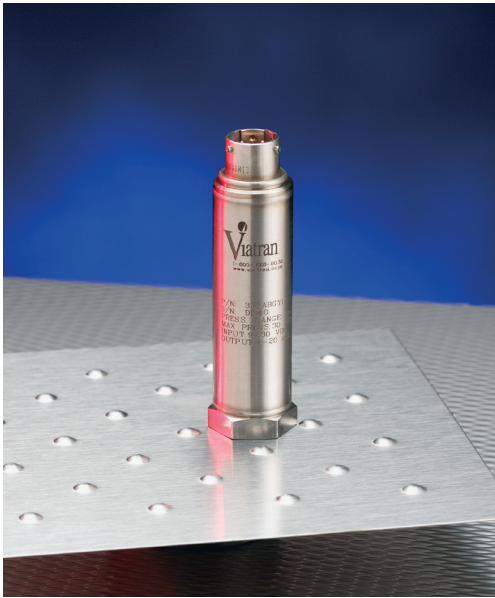


## PRESSURE TRANSMITTER

# Models 122 / 222 / 322



### FEATURES

- Small size - 7/8" diameter
- $\leq 0.25\%$  combined accuracy
- 4-20 mA, 0-5 Vdc, mV/V output
- All welded stainless construction
- 316L wetted parts

### TYPICAL APPLICATIONS

- Aerospace
- Military
- Engine testing
- Brake testing
- Tank level

### DESIGNED FOR TIGHT PLACES

It's tiny but durable. The 316L stainless steel diaphragm and all welded stainless construction provides a corrosion resistant and shock tolerant instrument ideally suited for corrosive and severe industrial environments.

### INSPIRED BY SMALL PLACES

The electronics on the X22 and silicon sensor design have a combined accuracy of better than 0.25% with an optional improved accuracy of less than 0.1% linearity. Available standard outputs are mV/V, 4-20 mA and 0-5 Vdc.

### EASY ADAPTABLE

Viatran's ability to customize products provides extreme flexibility, allowing the X22 to easily fit into your existing system. Options include alternate pressure ports, electrical connectors and various electrical outputs.

### ENGINEERED TO ORDER

The X22 came into being because a customer needed a small-sized and rugged solution. If your application requires a specialized solution, give us a call. We're large enough to solve your application, and small enough to care about it. Call for details and availability.

**PERFORMANCE**

	Full Scale Pressure Range .....	0-3 thru 0-5000 PSIG, PSIS, 0-15 thru 0-5000 PSIA
	.....	0-15 PSIV*
	Linearity .....	≤±0.1% FSO typical (±0.25% FSO max)
	Hysteresis & Repeatability .....	≤±0.05% FSO
	Zero Balance .....	≤±1.0% FSO
	Long-Term Stability .....	≤±0.1% FSO per 6 months
	Response Time .....	≤5 mSec for 10% to 90% FSO
	Temperature Effect on Zero .....	≤±1.0% FSO per 100°F (55°C)
	Temperature Effect on Span .....	≤±1.0% FSO per 100°F (55°C)
	Compensated Temperature.....	32°F to 180°F (0°C to 82°C)
Operating Temperature	122 .....	-40°F to 250°F (-40°C to 121°C)
	222 / 322 .....	-40°F to 185°F (-40°C to 85°C)
	Storage Temperature Limits.....	-40°F to 250°F (-40°C to 121°C)

**ELECTRICAL**

Supply Voltage	122 .....	10 Vdc nominal, 15 Vdc max	
	222 / 322 .....	9 to 30 Vdc	
	Power Supply Regulation.....	≤±0.05% FSO per volt	
Output Signal	122 .....	5 mV/V for 3 to 5 PSI; 10 mV/V all other ranges	
	222 .....	0 to 5 Vdc	
	322 .....	4 to 20 mA	
Load Resistance	222 .....	100K Ohms min	
	322 .....	1050 Ohms max at 30 Vdc	
	Circuit Protection .....	Output may be short circuited indefinitely. Input polarity may be reversed. Over-voltage protected to 1000 volts <1 mSec duration	
	Insulation Resistance .....	<5nS conductance	
	Electrical Connections.....	6-pin hermetic, bayonet-style, 303 SST weld-mounted connector	
	122	222	322
Pin A	+Power	+Power	+Power/Signal
Pin B	-Power	-Power	-Power/Signal
Pin C	+Signal	+Signal	No connection
Pin D	-Signal	-Signal	No connection
Pin E	Case ground	Case ground	Case ground
Pin F	No connection	No connection	No connection

**MECHANICAL**

Proof Pressure.....	3 times range (10,000 PSI max)
Burst Pressure.....	5 times range (10,000 PSI max)
Diameter .....	0.875 inches
Weight .....	5 oz

**ACCESSORIES**

Panel mount digital display

\* For PSIV and Compound Range units

Thermal effect on zero .....	≤±3.0% per 100°F
Compensated temperature.....	32°F to 170°F (0°C to 76°C)

**MATERIALS OF CONSTRUCTION**

Housing Materials.....	316 stainless steel
Pressure Connection.....	316 stainless steel
Sensor .....	316 stainless steel
Mounting.....	May be supported by process piping
Identification.....	Laser etched onto body

**OPTIONS**

BP .....	Micro change M12 connector
DH.....	Special pressure range
DM .....	Modified output
DN.....	Improved accuracy (increase in length)
EA .....	Special calibration run
NH.....	Customer specified identification
ZU .....	Direct coupled cable
Pressure Ports YC .....	MS-33656-04 Male thread (7/16-20 UNF)
YH .....	1/8" NPT (M)
YI.....	1/8" NPT (F)

Note: Application of some available options may affect standard performance. Consult your Viatran Representative for details.

ALL DIMENSIONS ARE NOMINAL, IN INCHES  
AND FOR REFERENCE PURPOSES ONLY

