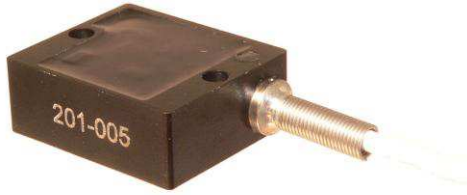


# MODEL 201 ACCELEROMETER

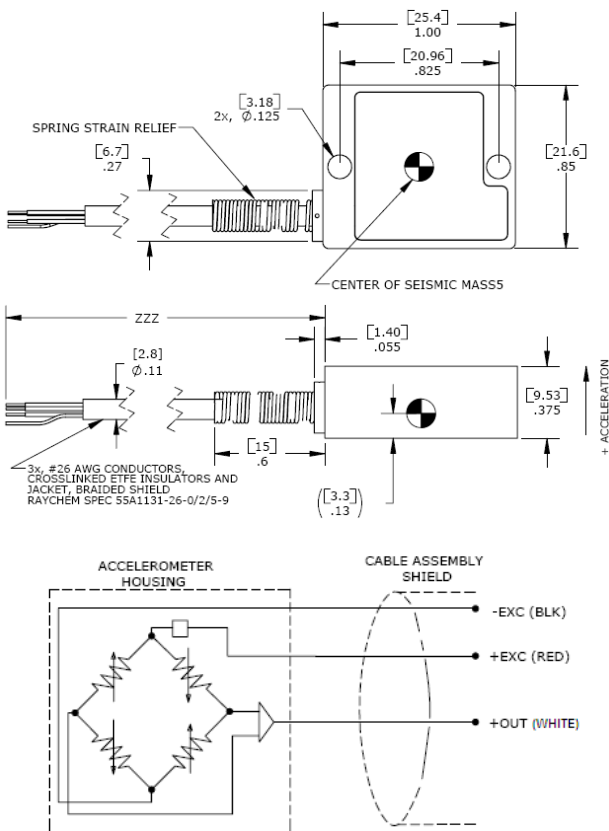


## SPECIFICATIONS

- MEMS DC Accelerometer
- Temperature Calibrated
- Robust Cable and Strain Relief
- Amplified Output

The **Model 201** is a rugged, low-profile MEMS accelerometer designed for both static and dynamic applications. The accelerometer is available in ranges from  $\pm 2$  to  $\pm 100g$  and offers a signal conditioned and amplified output. Featuring gas damped MEMS sensing element and a LP filtering circuit, **the model 201** provides a flat frequency response to 100Hz over an operating temperature range of  $-40^{\circ}\text{C}$  to  $+125^{\circ}\text{C}$ .

## DIMENSIONS



## FEATURES

- $\pm 2g$  to  $\pm 100g$  Dynamic Range
- Amplified Output
- Low Power Consumption
- Gas Damping
- #26 AWG Rugged Cable
- DC, Low Frequency Response
- 5 to 30Vdc Excitation Voltage

## APPLICATIONS

- Transportation Measurements
- Vibration & Shock Monitoring
- Road Vehicle Testing
- Low Frequency Applications
- Motion Analysis

**PERFORMANCE SPECIFICATIONS**

All values are typical at +24°C, 80Hz and 12Vdc excitation unless otherwise stated. Measurement Specialties reserves the right to update and change these specifications without notice.

Parameters								Notes
<b>DYNAMIC</b>								
Range (g)	±2	±5	±10	±20	±30	±50	±100	
Sensitivity (mV/g)	1000	400	200	100	67	40	20	
-3dB Cutoff Frequency (Hz)	100 ±15	100 ±15	100 ±15	100 ±15	100 ±15	100 ±15	100 ±15	
Rolloff Above Cutoff Frequency (dB/dec)	-40	-40	-40	-40	-40	-40	-40	
Natural Frequency (Hz)	700	800	1000	1500	1500	4000	6000	
Non-Linearity (%FSO)	±0.5	±0.5	±0.5	±0.5	±0.5	±0.5	±0.5	
Transverse Sensitivity (%)	<3	<3	<3	<3	<3	<3	<3	<2 Typical
Damping Ratio	0.7	0.7	0.7	0.7	0.7	0.7	0.6	
Shock Limit (g)	5000	5000	5000	5000	5000	5000	5000	
Residual Noise (µV RMS)	80	50	50	60	50	60	60	Passband
Residual Noise (µg/√Hz RMS)	8	13	25	60	75	150	300	Spectral

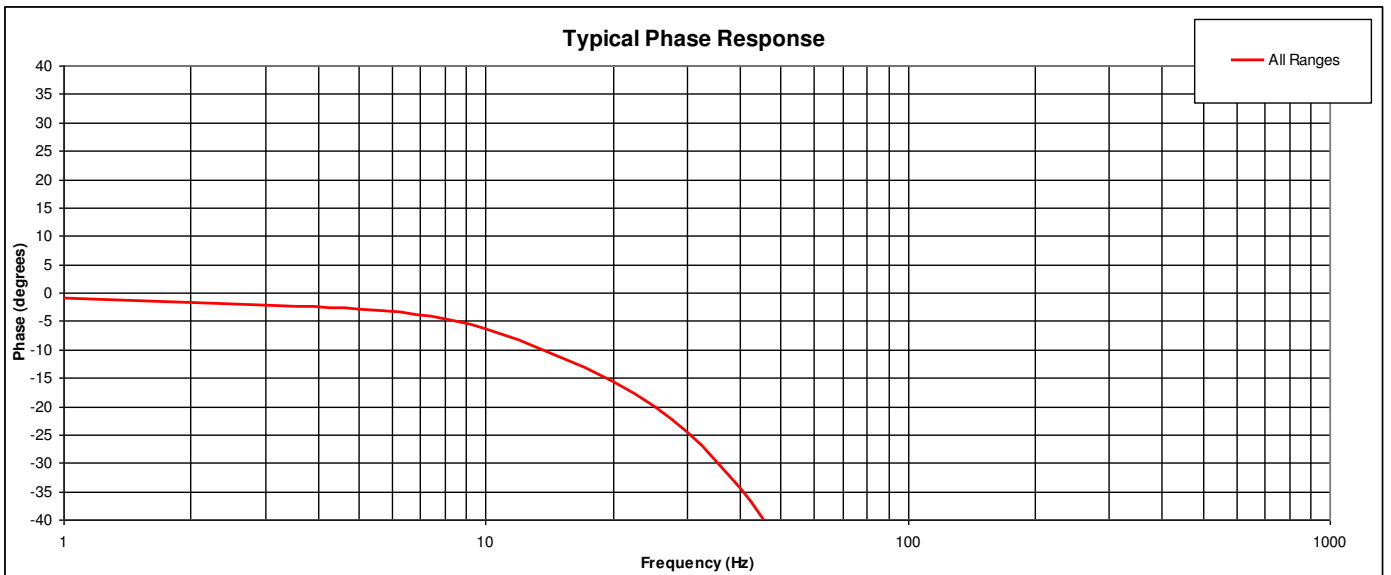
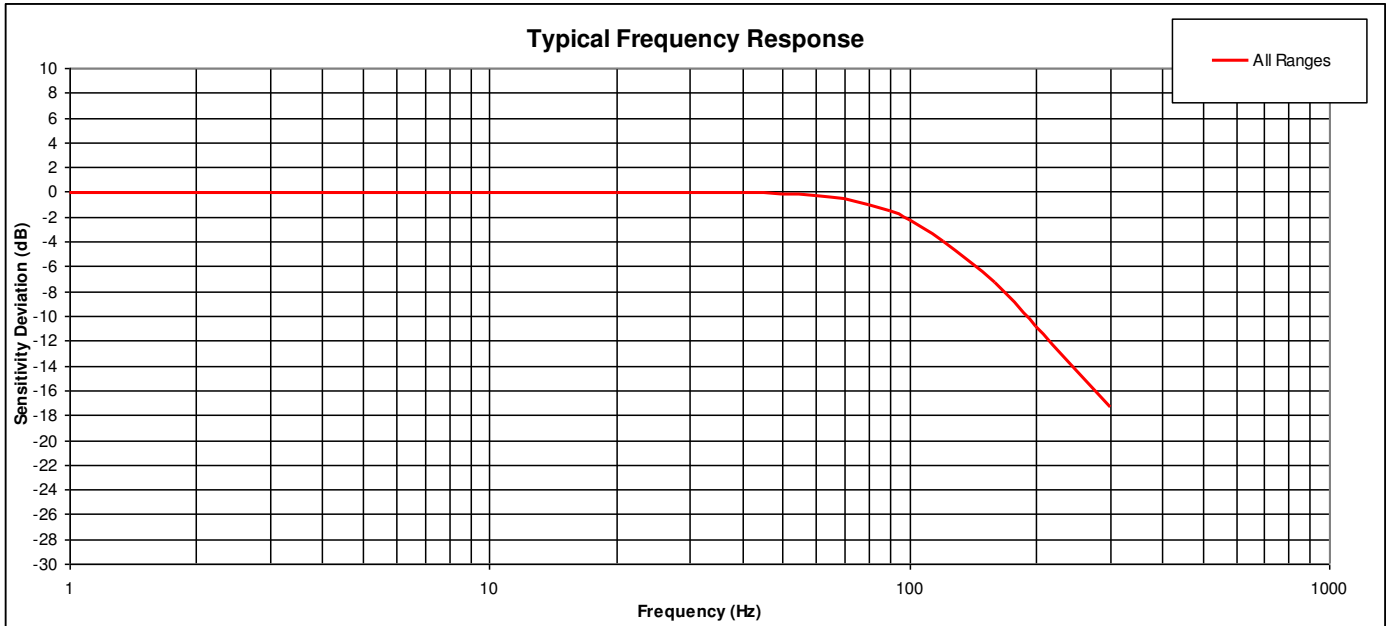
<b>ELECTRICAL</b>								
Zero Acceleration Output (V)	2.5 ±0.1							
Excitation Voltage (Vdc)	5 to 30							
Excitation Current (mA)	<5							
Full Scale Output Voltage Swing (Vdc)	0.5 to 4.5							
Output Resistance (Ω)	<100							
Insulation Resistance (MΩ)	>100							@100Vdc
Turn On Time (msec)	<100							
Ground Isolation	Isolated from Mounting Surface							

<b>ENVIRONMENTAL</b>	
Thermal Zero Shift (%FSO/°C)	±0.012
Thermal Sensitivity Shift (%/°C)	±0.020
Operating Temperature (°C)	-40 to 125
Compensated Temperature (°C)	0 to 85
Storage Temperature (°C)	-40 to 125
Humidity	Epoxy Encapsulated, IP65

<b>PHYSICAL</b>	
Case Material	Anodized Aluminum
Cable	ETFE Insulated Leads, Braided Shield, Crosslinked ETFE Jacket
Weight (grams)	10
Mounting	2x #4 or M3 Screws
Mounting Torque	6 lb-in (0.7 N-m)

<b>Calibration supplied:</b>	CS-FREQ-0100	NIST Traceable Amplitude Calibration from 20Hz to 100Hz
<b>Supplied accessories:</b>	AC-A03654	2x #4-40 (1/2" length) Socket Head Cap Screw and Washer
<b>Optional accessories:</b>	AC-D02669 121	Triaxial Mounting Block Three Channel DC Differential Amplifier

The information in this sheet has been carefully reviewed and is believed to be accurate; however, no responsibility is assumed for inaccuracies. Furthermore, this information does not convey to the purchaser of such devices any license under the patent rights to the manufacturer. Measurement Specialties, Inc. reserves the right to make changes without further notice to any product herein. Measurement Specialties, Inc. makes no warranty, representation or guarantee regarding the suitability of its product for any particular purpose, nor does Measurement Specialties, Inc. assume any liability arising out of the application or use of any product or circuit and specifically disclaims any and all liability, including without limitation consequential or incidental damages. Typical parameters can and do vary in different applications. All operating parameters must be validated for each customer application by customer's technical experts. Measurement Specialties, Inc. does not convey any license under its patent rights nor the rights of others.



## ORDERING INFORMATION

PART NUMBERING Model Number+Range+Cable Length

201-XX--CCC  
| |  
| | Cable (060 is 60 inches)  
| Range (05 is ±5g, 100 is ±100g)

Example: 201-05-060  
Model 201, 5g, 60" (5ft) Cable

### [TE.com/sensorsolutions](http://TE.com/sensorsolutions)

Measurement Specialties, Inc., a TE Connectivity company.

Measurement Specialties, TE Connectivity, TE Connectivity (logo) and EVERY CONNECTION COUNTS are trademarks. All other logos, products and/or company names referred to herein might be trademarks of their respective owners.

The information given herein, including drawings, illustrations and schematics which are intended for illustration purposes only, is believed to be reliable. However, TE Connectivity makes no warranties as to its accuracy or completeness and disclaims any liability in connection with its use. TE Connectivity's obligations shall only be as set forth in TE Connectivity's Standard Terms and Conditions of Sale for this product and in no case will TE Connectivity be liable for any incidental, indirect or consequential damages arising out of the sale, resale, use or misuse of the product. Users of TE Connectivity products should make their own evaluation to determine the suitability of each such product for the specific application.

© 2015 TE Connectivity Ltd. family of companies All Rights Reserved.