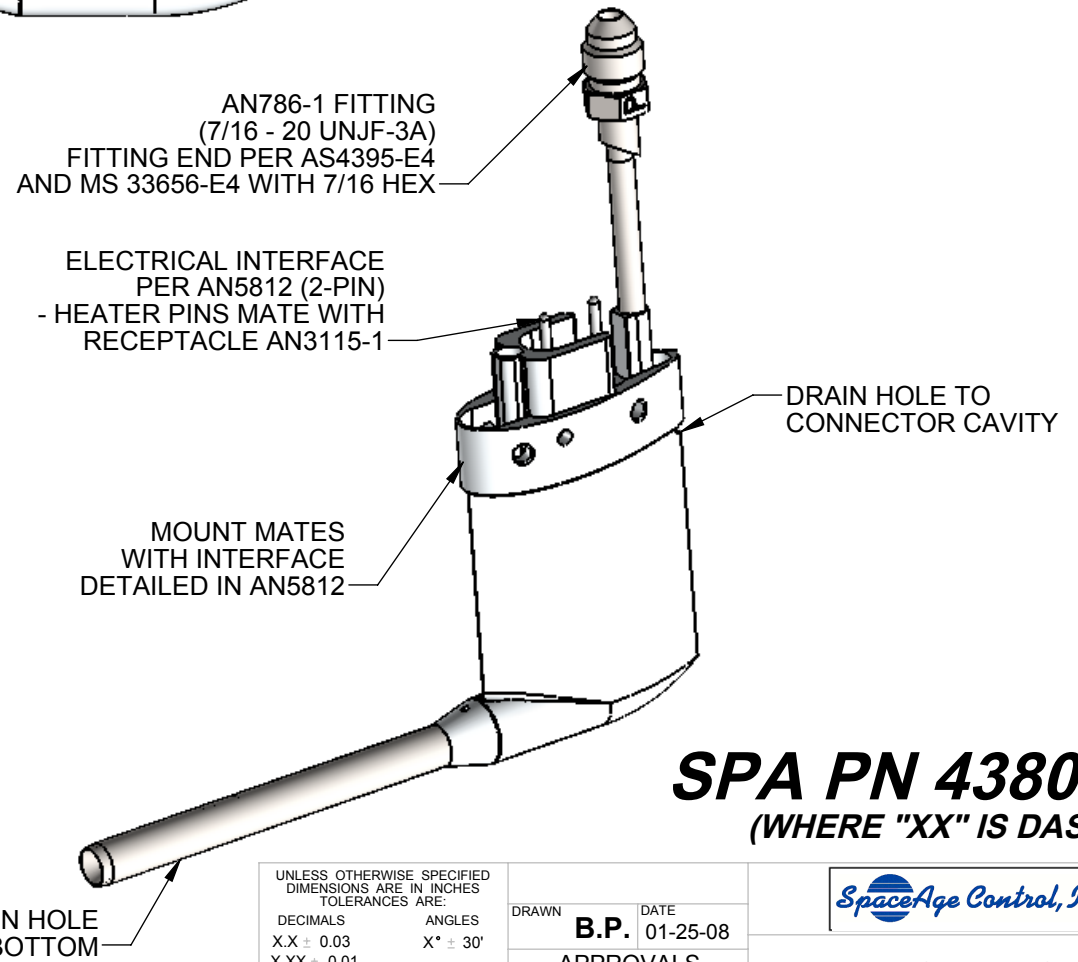
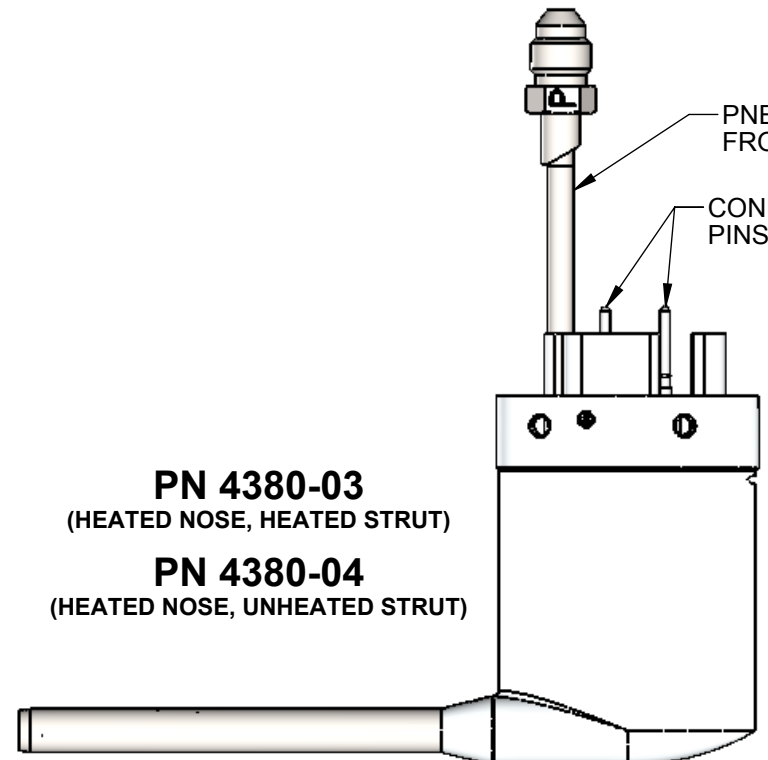
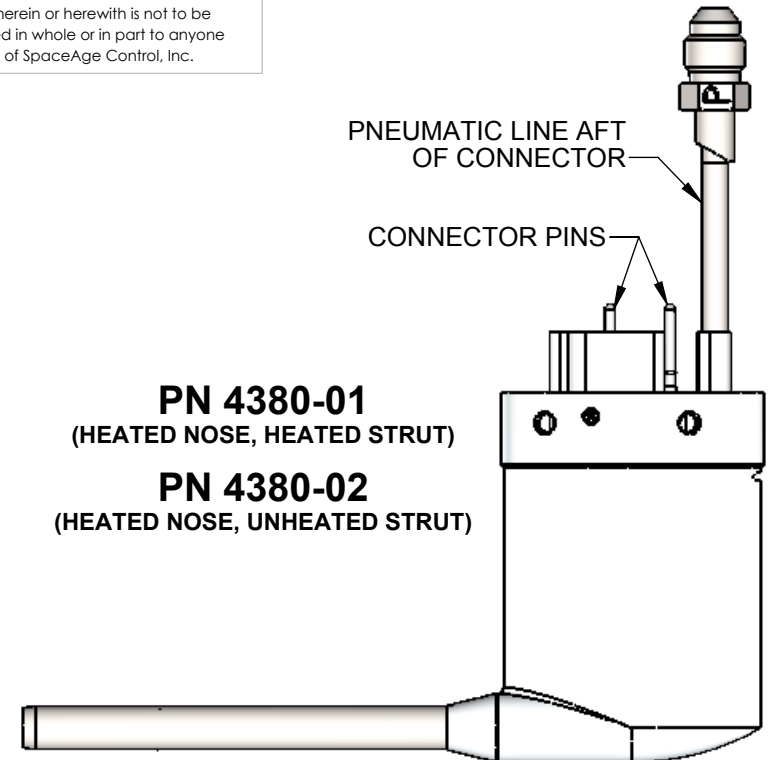


This drawing contains design and other information which is the property of SpaceAge Control, Inc. Except for rights expressly granted by contract to the United States Government, this drawing and data disclosed herein or herewith is not to be reproduced, used, or disclosed in whole or in part to anyone without the written permission of SpaceAge Control, Inc.



NOTES (UNLESS OTHERWISE SPECIFIED):

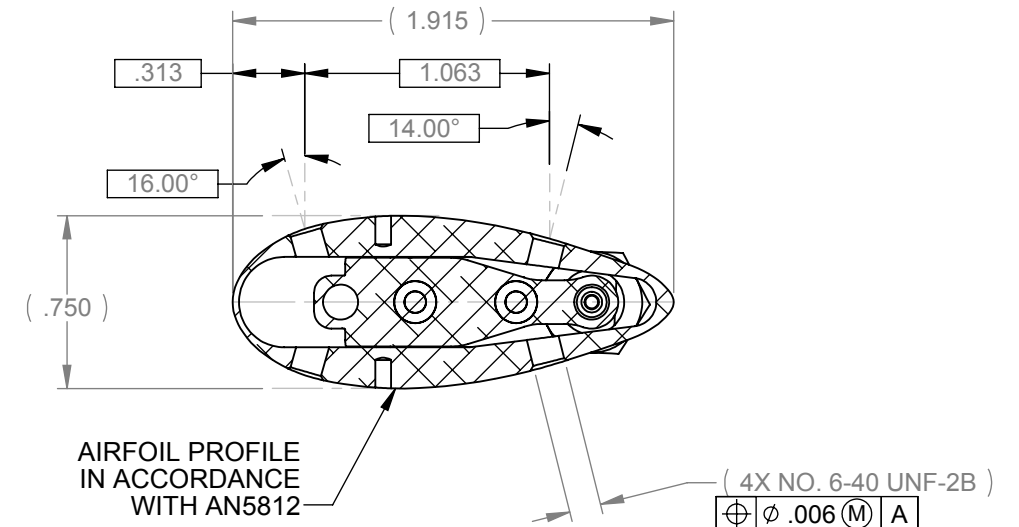
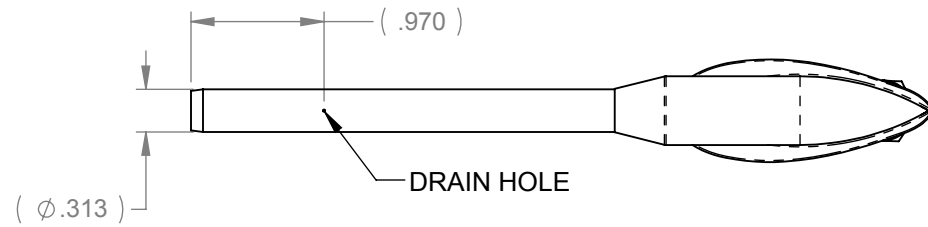
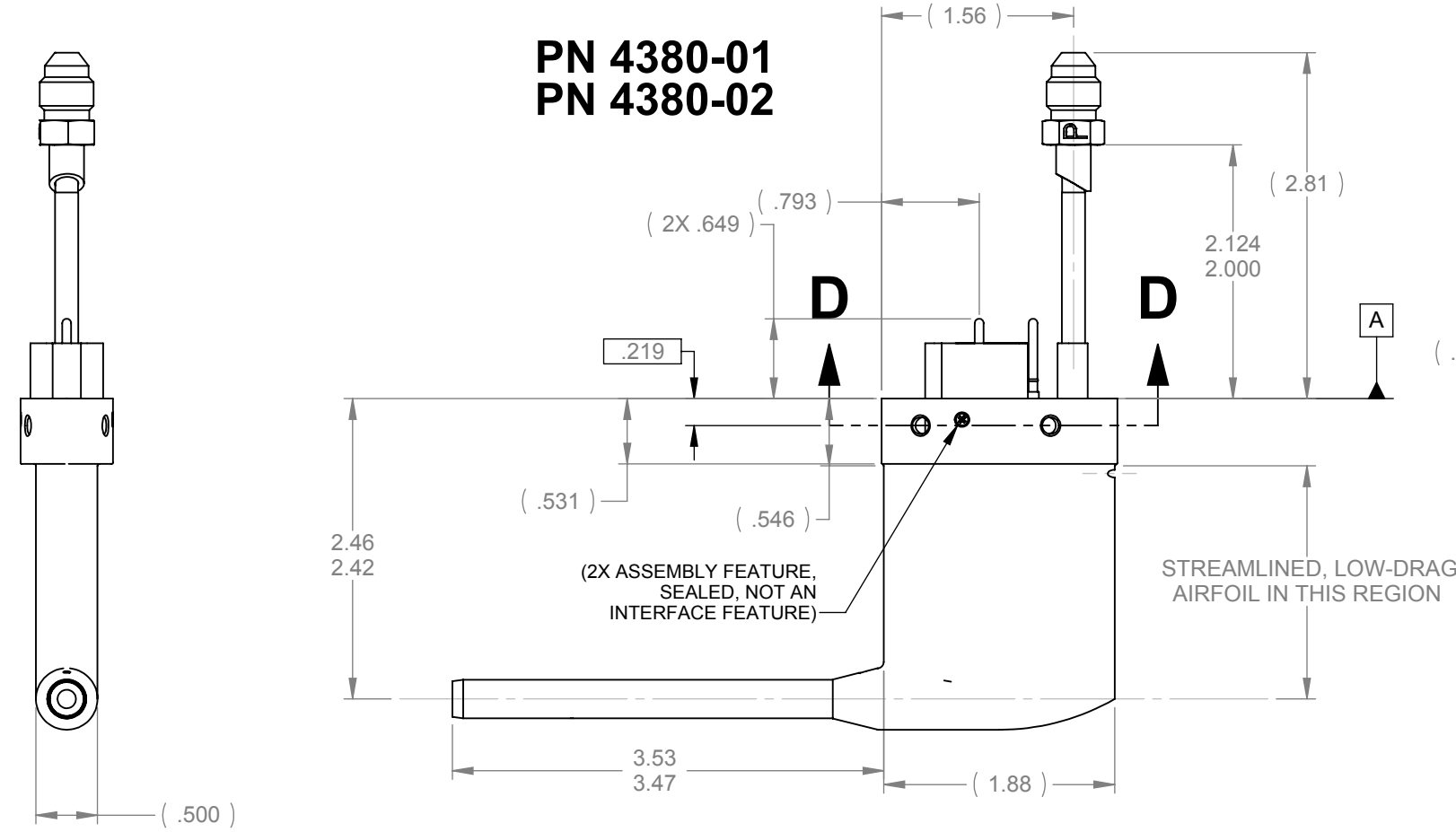
1. DESCRIPTION: HEATED PITOT PROBE WITH MOUNTING INTERFACE, AND NOSE DRAIN HOLE ORIENTATION COMPATIBLE WITH AN5812. THE LOCATIONS OF THE HEATER PINS AND THE PRESSURE FITTING ARE AS SHOWN BY CONFIGURATION. A DRAIN FROM THE CONNECTOR CAVITY TO THE AFT LOCATION IN THE STRUT IS PROVIDED.
2. HEATER OPERATION: 28-VOLT SELF REGULATING HEATER - POWER INCREASES WITH INCREASES IN AIRFLOW AND WITH DECREASES IN AMBIENT AIR TEMPERATURE. THE PEAK / SPIKE POWER CONSUMPTION AT INITIAL POWERUP IS NOT MORE THAN 4 TIMES THE MAXIMUM "CONTINUOUS" POWER CONSUMPTION AND DROPS WITHIN THE "CONTINUOUS" POWER LEVELS (SEE BELOW) WITHIN ONE MINUTE.
3. CONTINUOUS POWER CONSUMPTION (28 VOLT OPERATION):
 PN'S 4380-01 AND -03: 110 WATTS MAX
 PN'S 4380-02 AND -04: 55 WATTS MAX
4. ANTI-ICING PERFORMANCE:
 FOR PROBES WITH HEATED NOSE AND STRUT: WITHSTANDS SEVERE IN-FLIGHT ICING CONDITIONS PER FAA STANDARD TSO-C16A AND BSI 2G-135 SECTION 8.7.2 (I.E. 300 KNOTS AT -30 ° C, CYCLIC WATER CONTENT, 30 MINUTES CONTINUOUS DURATION).
 PROBES WITH UNHEATED STRUT: ICE HAS A TENDENCY TO SHED OFF THE STRUT DUE TO AERODYNAMIC DRAG, BUT THIS IS NOT GUARANTEED. FOR COMPLIANCE TO THE TIME DURATION AT ICING LEVELS, LIMIT USE TO APPLICATIONS AT AIRSPEEDS OF 200 KNOTS AND BELOW. HIGHER AIRSPEEDS ARE PERMISSIBLE AT LOWER LIQUID WATER CONTENT OR SHORTER TIME DURATIONS (20 MINUTES MAX) VERSUS THE TSO SPECIFICATIONS.
5. WEIGHT: .40 LB MAX

SPA PN 4380-XX
(WHERE "XX" IS DASH NO.)

UNLESS OTHERWISE SPECIFIED DIMENSIONS ARE IN INCHES TOLERANCES ARE:		DRAWN B.P. DATE 01-25-08			
DECIMALS	ANGLES	APPROVALS			
X.X ± 0.03	X° ± 30'	CHECKED		PITOT PROBE, AN5812 MOUNT	
X.XX ± 0.01		DIGITAL - ON FILE			
X.XXX ± 0.005		ENG		SIZE B CAGE CODE 34851 DWG. NO. 4380 REV. B SCALE CAD FILE: SHEET 1 OF 2	
DO NOT SCALE DRAWING		DIGITAL - ON FILE			
MATERIAL	SEE NOTES				
FINISH	SEE NOTES				
CAD GENERATED DRAWING, DO NOT MANUALLY UPDATE					

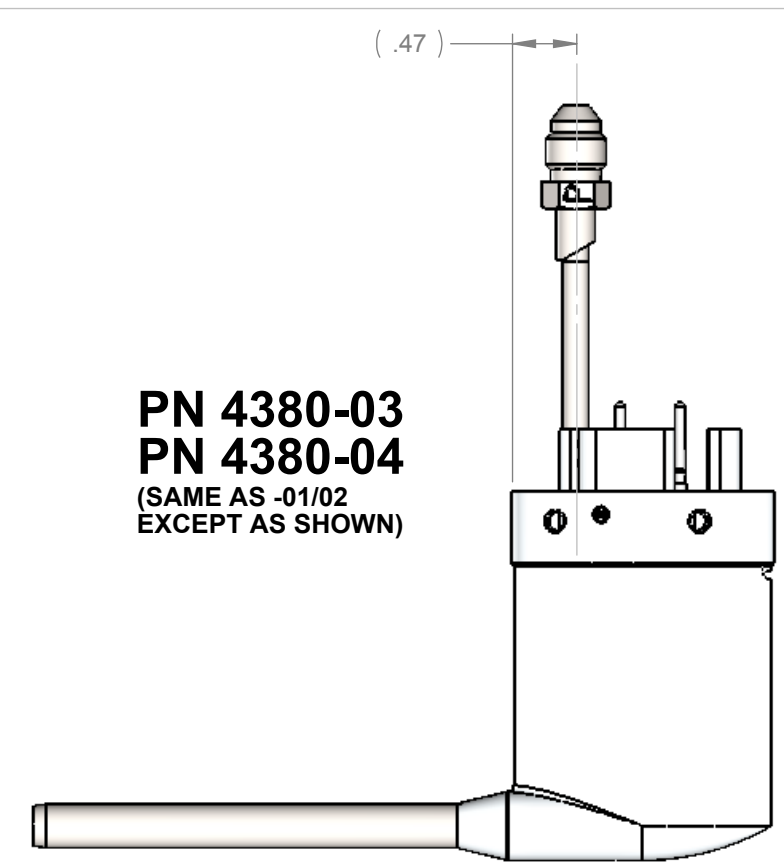
This drawing contains design and other information which is the property of SpaceAge Control, Inc. Except for rights expressly granted by contract to the United States Government, this drawing and data disclosed herein or herewith is not to be reproduced, used, or disclosed in whole or in part to anyone without the written permission of SpaceAge Control, Inc.

**PN 4380-01
PN 4380-02**



Ø.067 (DRAIN TO CONNECTOR CAVITY)
Ø.061

**PN 4380-03
PN 4380-04**
(SAME AS -01/02 EXCEPT AS SHOWN)



SIZE	CAGE CODE	DWG. NO.	REV.
B	34851	4380	B
SCALE	CAD FILE:	SHEET	OF
		2	2