

This drawing contains design and other information which is the property of SpaceAge Control, Inc. Except for rights expressly granted by contract to the United States Government, this drawing and data disclosed herein or herewith is not to be reproduced, used, or disclosed in whole or in part to anyone without the written permission of SpaceAge Control, Inc.

STRAIGHT FITTINGS

REAR-ANGLED FITTINGS

SIDE-ANGLED FITTINGS (PN 4420-09)

PITOT PRESSURE FITTING, AN786-1 (7/16 - 20 UNJF-3A) FITTING END PER MS 33656-E4 AND AS4395-E4 WITH 7/16 HEX

STATIC PRESSURE FITTING, AN786-1 (7/16 - 20 UNJF-3A) FITTING END PER MS 33656-E4 AND AS4395-E4 WITH 7/16 HEX

2-PIN ELECTRICAL INTERFACE COMPATIBLE WITH AN5812 (I.E. HEATER PINS MATE WITH RECEPTACLE AN3115-1)

MOUNT MATES WITH INTERFACE DETAILED IN AN5814

STATIC PORTS, 4 HOLE PATTERN 180° FROM DRAIN HOLE

STATIC PORTS, 5-HOLE PATTERN ALIGNED WITH DRAIN HOLE

DRAIN HOLE (SEE "X" DIMENSION)

PITOT NOSE


DRAIN HOLE ANGULAR LOCATION

0° DRAIN LOCATION

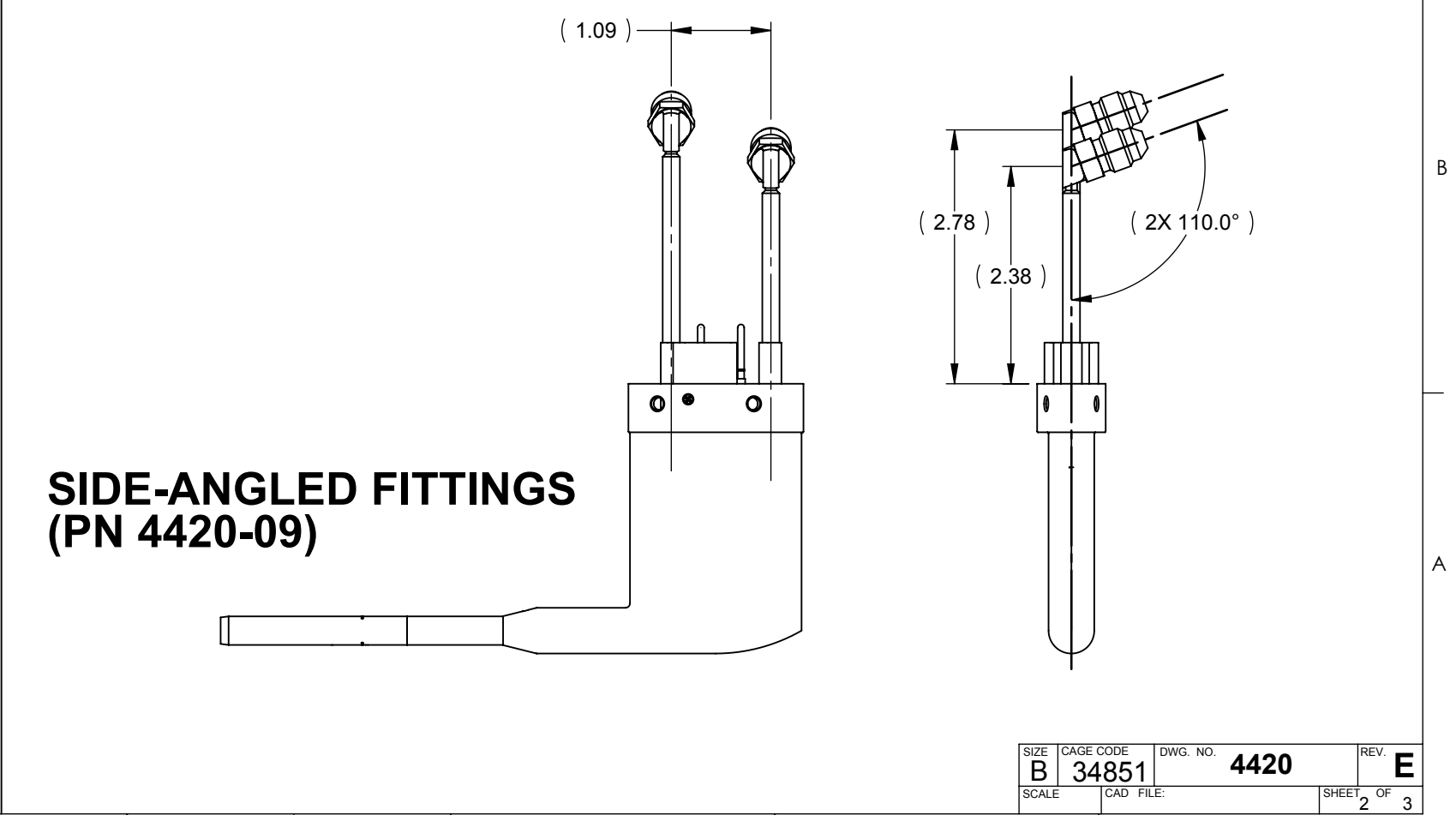
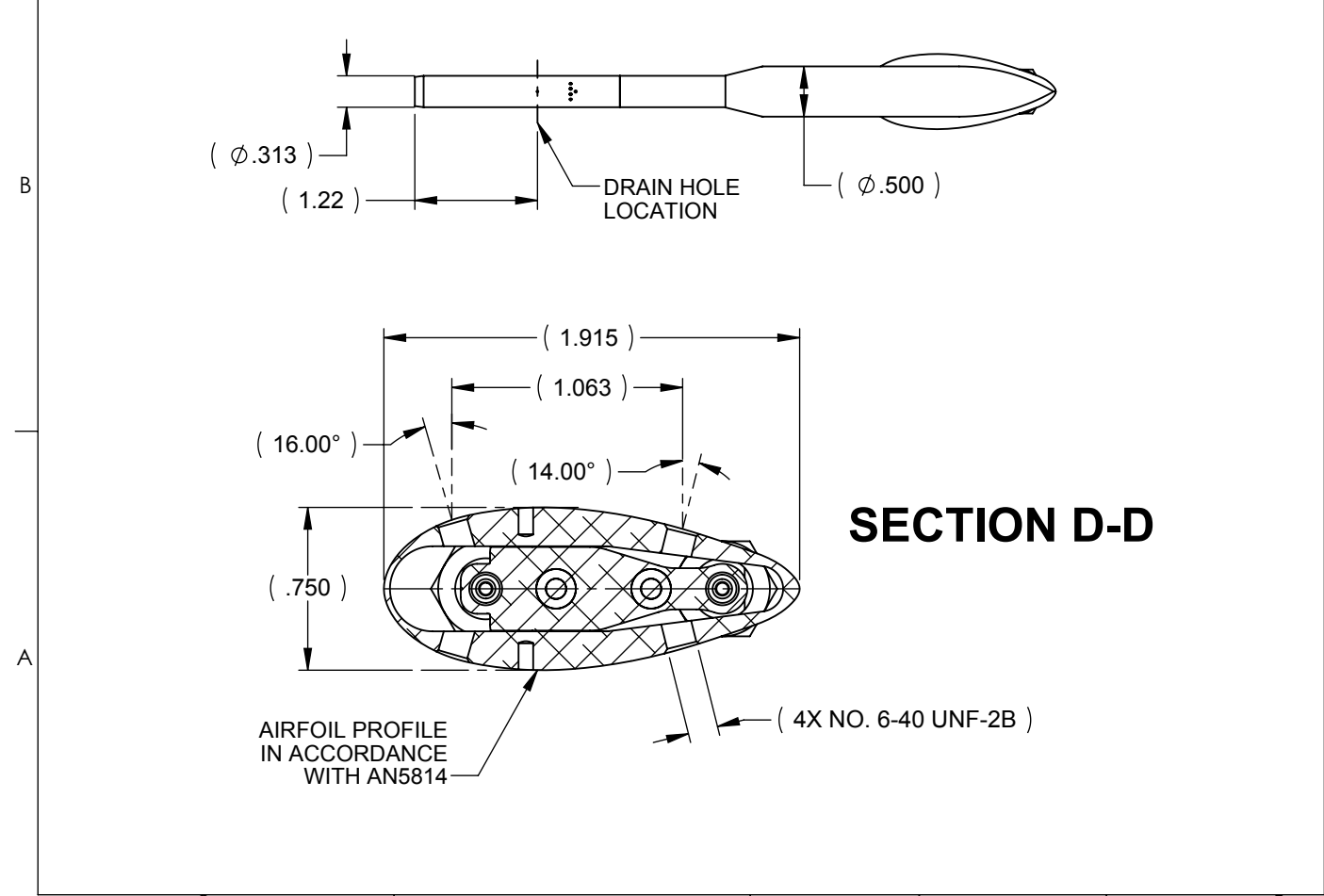
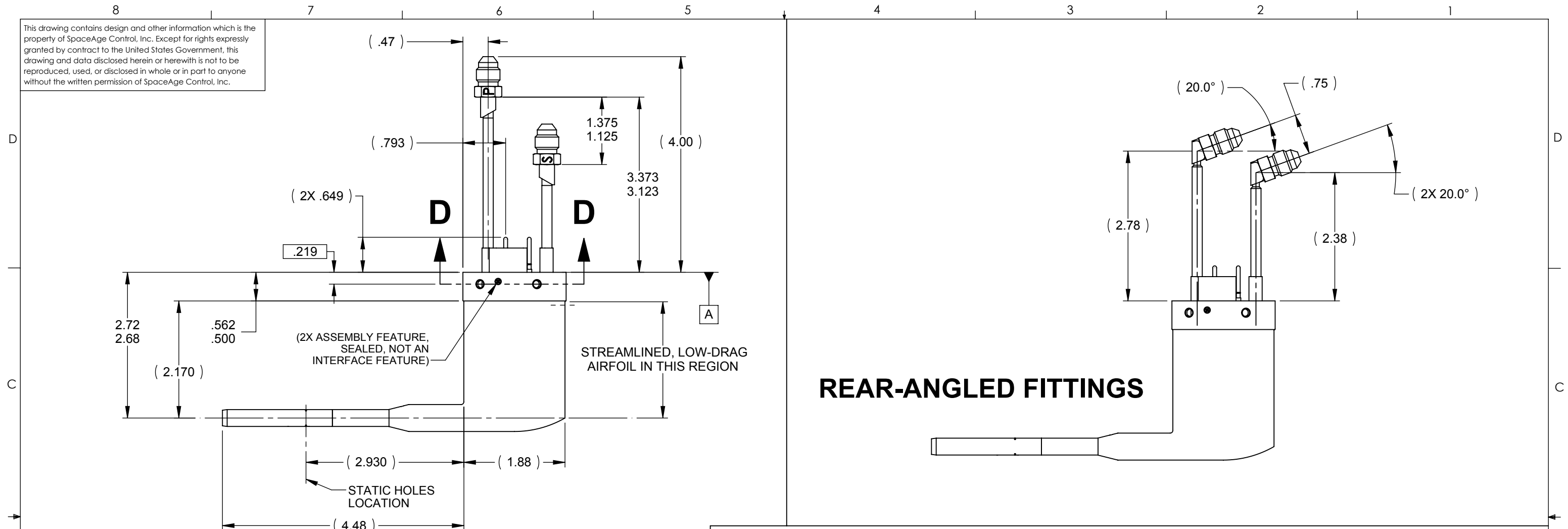
"X"

PART NO.	DRAIN HOLE ANGLE "X"	FITTINGS	SUPPLIED BRACKET MOUNTING HARDWARE
4420-01	0°	STRAIGHT	4X BUTTON HEAD SCREWS & LOCKWASHERS, 6-40 UNF-2A X .25 LONG
4420-02	90°	STRAIGHT	4X BUTTON HEAD SCREWS & LOCKWASHERS, 6-40 UNF-2A X .25 LONG
4420-03	180°	STRAIGHT	4X BUTTON HEAD SCREWS & LOCKWASHERS, 6-40 UNF-2A X .25 LONG
4420-04	270°	STRAIGHT	4X BUTTON HEAD SCREWS & LOCKWASHERS, 6-40 UNF-2A X .25 LONG
4420-05	0°	REAR-ANGLED	4X FLAT HEAD SCREWS, STAINLESS STEEL, 6-40 UNF-2A X .25 LONG
4420-06	90°	REAR-ANGLED	4X FLAT HEAD SCREWS, STAINLESS STEEL, 6-40 UNF-2A X .25 LONG
4420-07	180°	REAR-ANGLED	4X FLAT HEAD SCREWS, STAINLESS STEEL, 6-40 UNF-2A X .25 LONG
4420-08	270°	REAR-ANGLED	4X FLAT HEAD SCREWS, STAINLESS STEEL, 6-40 UNF-2A X .25 LONG
4420-09	135°	SIDE-ANGLED	4X FLAT HEAD SCREWS, STAINLESS STEEL, 6-40 UNF-2A X .25 LONG

SPA PN 4420-XX
WHERE "XX" IS DASH NO.

UNLESS OTHERWISE SPECIFIED DIMENSIONS ARE IN INCHES		DRAWN	B.P.	DATE	07-08-08	 PITOT-STATIC PROBE, AN5814 MOUNT	
		APPROVALS					
MATERIAL		SEE NOTES		CHECKED	DIGITAL - ON FILE		SIZE B CAGE CODE 34851 DWG. NO. 4420 REV. E
FINISH		SEE NOTES		ENG	DIGITAL - ON FILE		
CAD GENERATED DRAWING, DO NOT MANUALLY UPDATE				SCALE	CAD FILE:	SHEET	1 OF 3

This drawing contains design and other information which is the property of SpaceAge Control, Inc. Except for rights expressly granted by contract to the United States Government, this drawing and data disclosed herein or herewith is not to be reproduced, used, or disclosed in whole or in part to anyone without the written permission of SpaceAge Control, Inc.

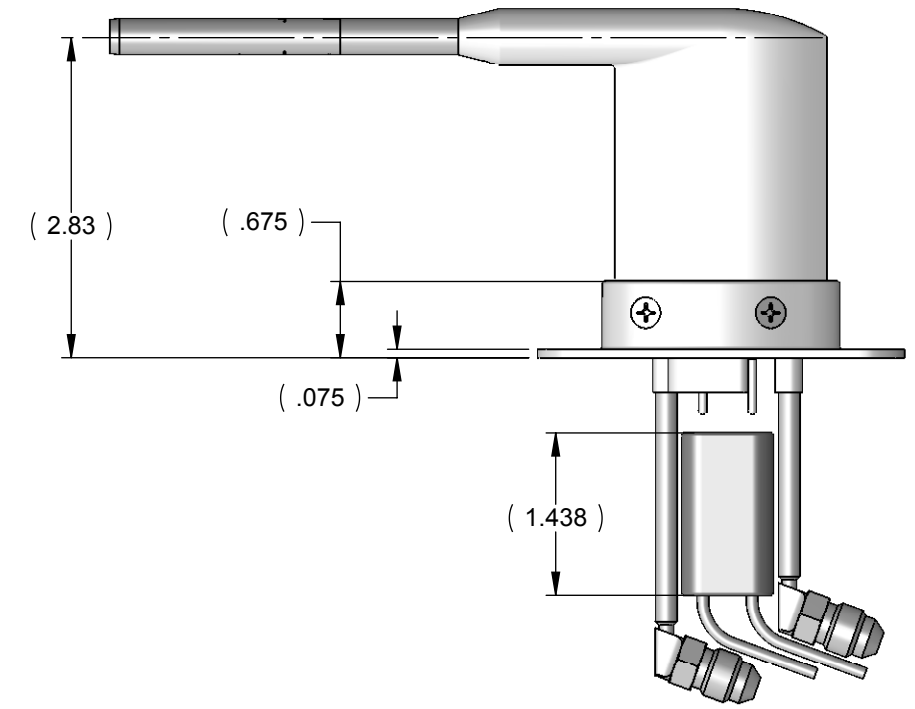
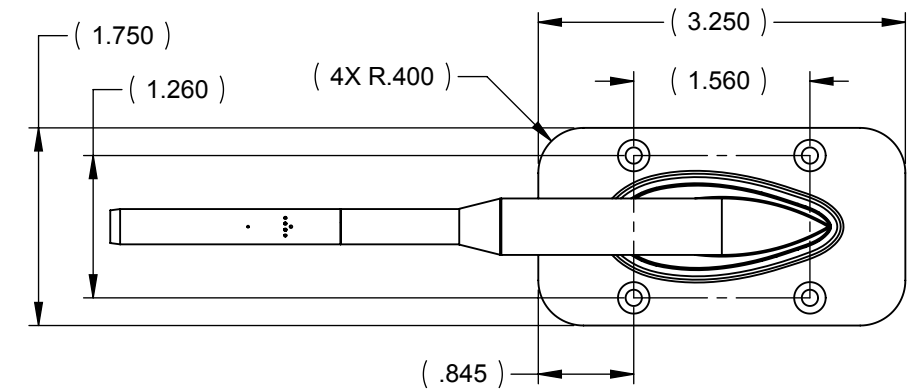
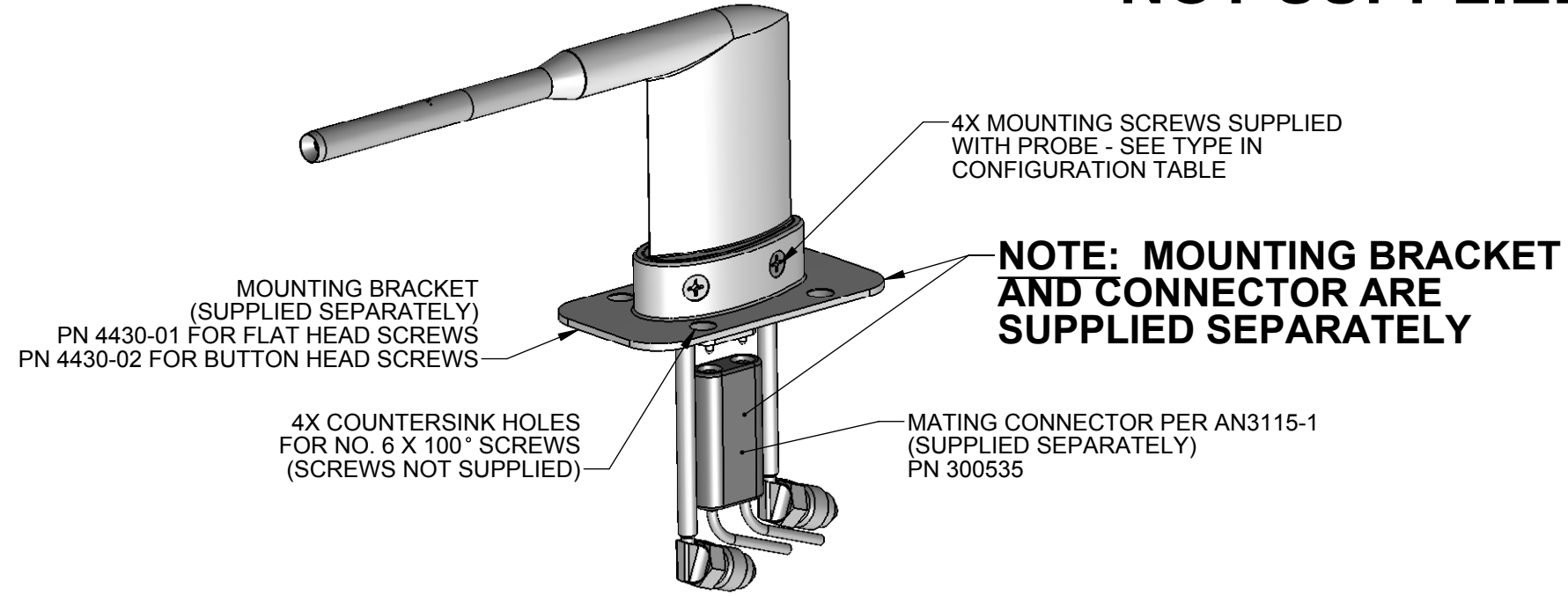


SIZE	CAGE CODE	DWG. NO.	REV.
B	34851	4420	E
SCALE	CAD FILE:	SHEET	OF
		2	3

This drawing contains design and other information which is the property of SpaceAge Control, Inc. Except for rights expressly granted by contract to the United States Government, this drawing and data disclosed herein or herewith is not to be reproduced, used, or disclosed in whole or in part to anyone without the written permission of SpaceAge Control, Inc.

INSTALLATION DETAILS

(BRACKET AND CONNECTOR NOT SUPPLIED)



NOTES (UNLESS OTHERWISE SPECIFIED):

1. DESCRIPTION: HEATED PITOT PROBE WITH MOUNTING INTERFACES COMPATIBLE WITH AN5814. HEATING IS PROVIDED IN THE NOSE AND THE STRUT / MAST. ADDITIONAL CONFIGURATIONS ARE OFFERED WITH ALTERNATE DRAIN HOLE LOCATIONS OR "ANGLED FITTINGS" OPTION.
2. HEATER OPERATION: 28-VOLT SELF REGULATING HEATER IN THAT POWER CONSUMPTION INCREASES WITH HIGHER IN AIRFLOW AND WITH LOWER AIR TEMPERATURE. THE PEAK / SPIKE POWER CONSUMPTION OCCURS AT INITIAL POWERUP AND DROPS TO WITHIN THE "CONTINUOUS" POWER LEVELS WITHIN 30 SECONDS.
 - POWER-UP SHORT-DURATION SURGE: 440 WATTS (15.7 AMPS) MAX
 - CONTINUOUS STEADY STATE POWER CONSUMPTION IN FLIGHT: 100 WATTS (3.57 AMPS) MAX
 - CONTINUOUS STEADY STATE POWER CONSUMPTION IN STILL AIR: 60 WATTS (2.14 AMPS) MAX
 - CAUTION: PROBE SURFACE TEMPERATURES ON GROUND ARE VERY HOT
3. ANTI-ICING PERFORMANCE: WITHSTANDS IN-FLIGHT ICING CONDITIONS SUCH AS:
 - -25 °C STATIC TEMPERATURE
 - 300 KNOTS TRUE AIRSPEED
 - 1.0 g/m³ LIQUID WATER CONTENT
 - 15 MINUTES MAXIMUM EXPOSURE TIME AT THESE LEVELS

THE TIME LIMIT ABOVE CAN BE INCREASED PROPORTIONALLY HIGHER FOR LOWERED LEVELS OF LIQUID WATER CONTENT (I.E. 30 MINUTES MAX AT .50 G/M³) OR FOR REDUCED AIRSPEED (I.E. 30 MINUTES MAX AT 150 KNOTS). TIME DURATION IN ICING CONDITIONS CAN ALSO BE INCREASED BASED ON MILDER STATIC TEMPERATURE CONDITIONS.
4. WEIGHT: .40 LB MAX

SIZE	CAGE CODE	DWG. NO.	REV.
B	34851	4420	E
SCALE	CAD FILE:	SHEET	OF
		3	3