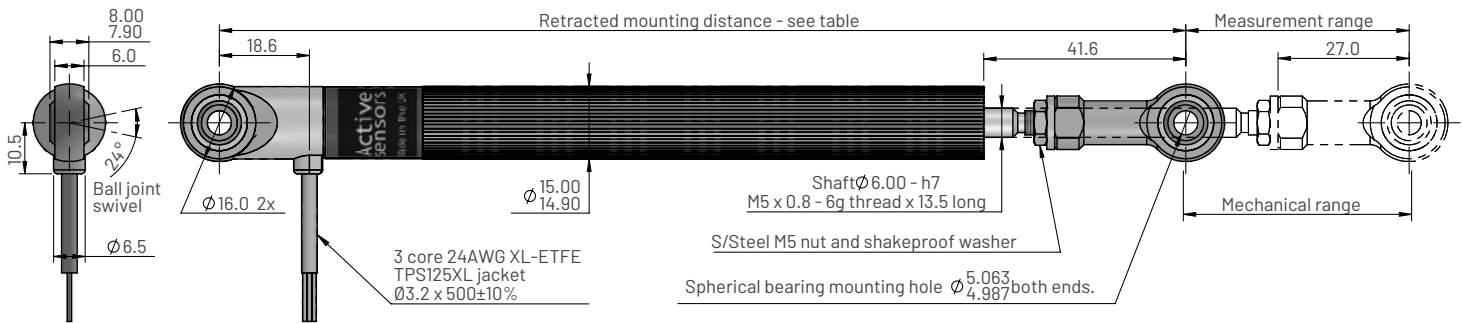


MLS1500 Series - Linear potentiometer

Dual element, Multi-contact. Ø15mm body. Ø5mm shaft.

Dimensions



Ordering information

MLS1522-1-XXX

Measurement range in mm

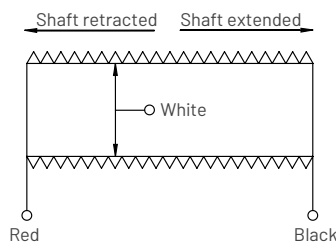
Electrical and mechanical specification

Parameters	Values												Units	
Measurement range (±0.5mm)	75	100	125	150	175	200	225	250	275	300	325	350	mm	
Retracted mounting distance	199	224	249	274	299	324	349	374	399	424	449	474	mm	
Resistance (typical)	1.5	2	2.5	3	3.5	4	4.5	5	5.5	6	6.5	7	Kohms	
Non-linearity	<±0.15												%FS	
Applied voltage	<66	<88	<110	<130									VDC	
Wiper load	>500						>550	>600	>650	>700	Kohms			
Mechanical range (±0.5mm)	Measurement Range +2												mm	
Shaft velocity	<10												m/s	
Insulation resistance (at 500V DC.)	>100												Mohms	
Operating temperature range	-30 to +125												°C	
Sealing	IP66													
Shaft operation force (typical)	200												grams	
Weight (approx.)	108	118	128	138	148	158	168	178	188	198	208	218	grams	
Materials	Sensor	Case: Anodised aluminium 6063 T5, Shaft: Stainless steel 303												
	Rod-ends	Body: Anodised aluminium 6026, Ball: Nickel plated steel												

Notes

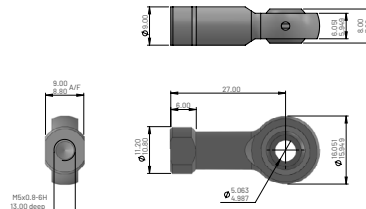
1. MLS sensors should be used as voltage dividers only.
2. Incorrect wiring may cause internal damage to the sensor.
3. General dimension tolerance is ±0.25mm.

Electrical connections (see note 2)



Accessories

5mm rod end



Ordering code

PT1922-0104-19

Material	
Housing	Aluminium alloy, anodised black
Ball	Steel BS970 230M07, electroless nickel plated
Race	Gr nylon