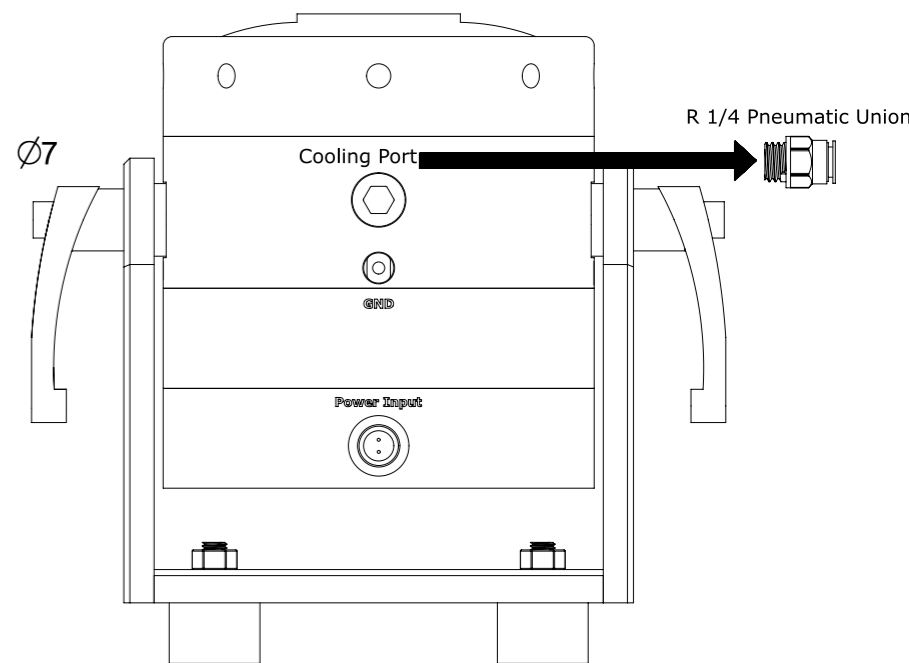
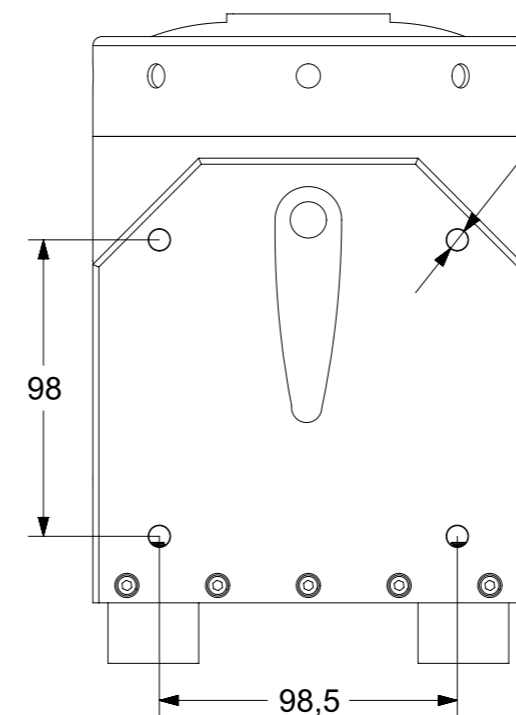
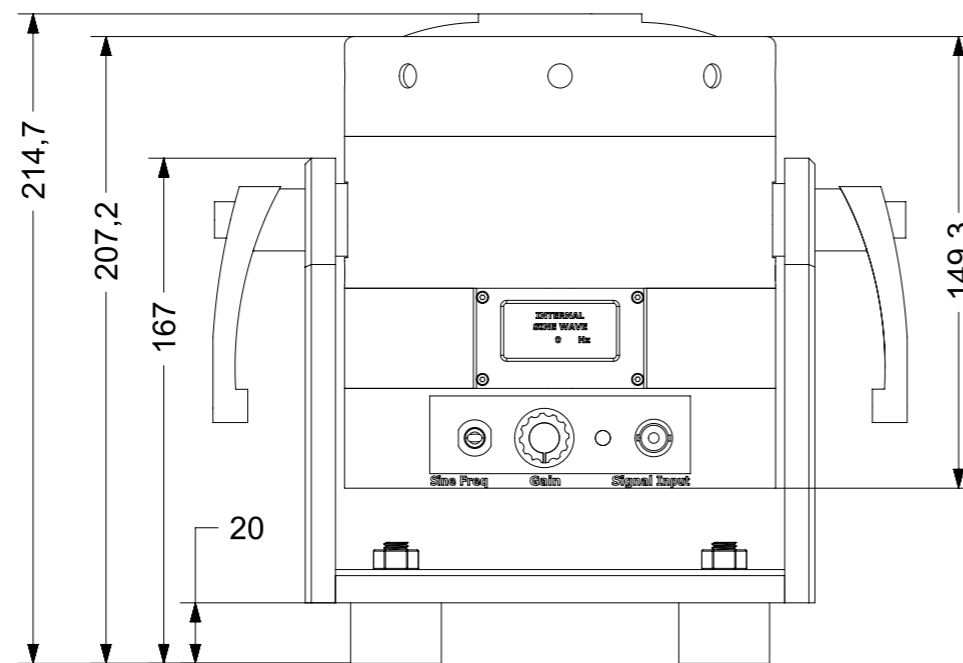
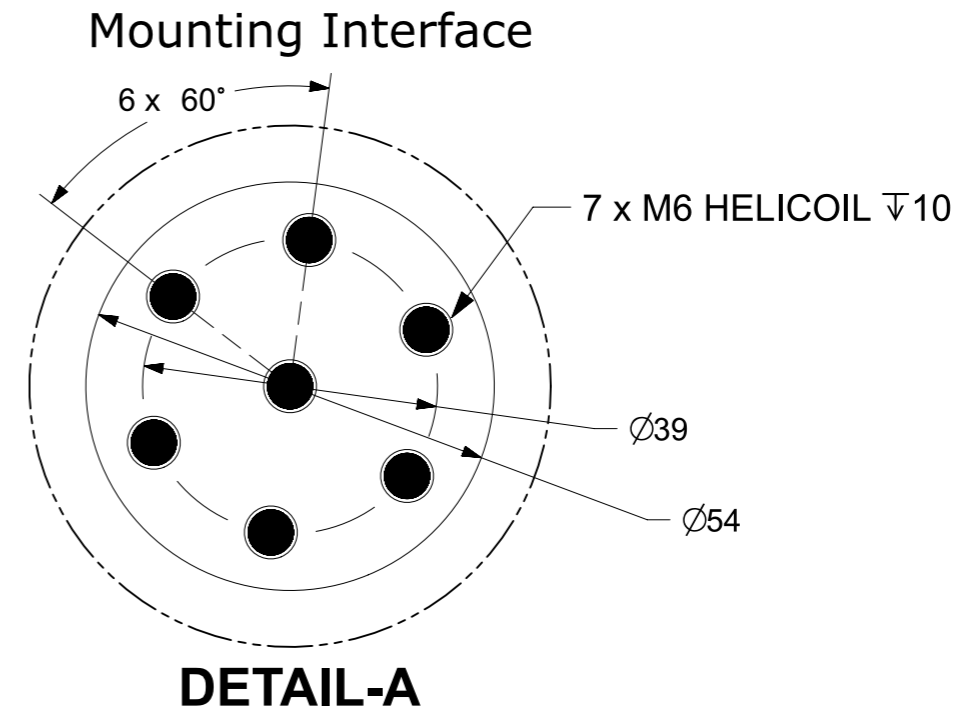
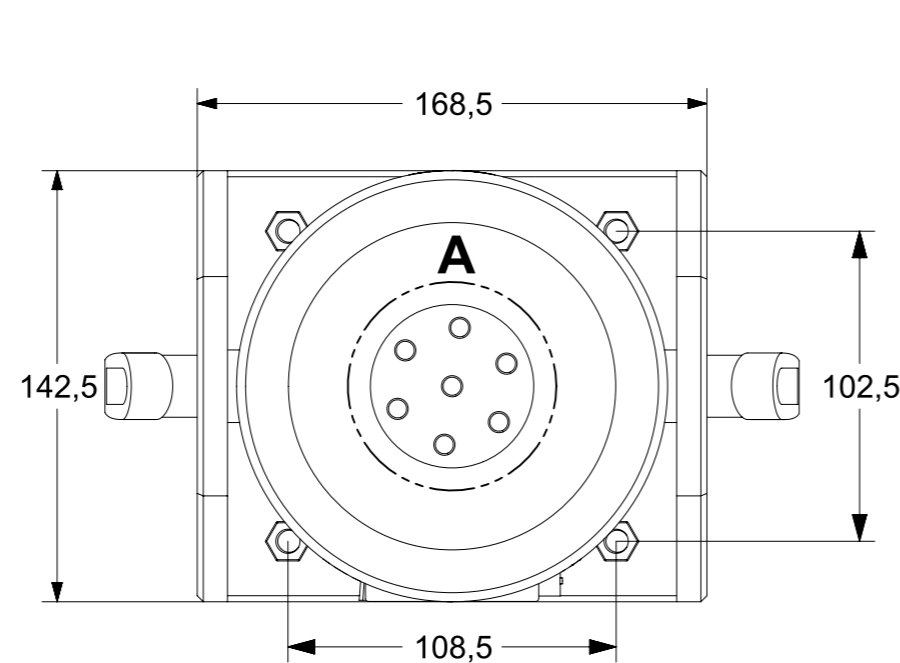


## DYNALABS PERMANENT MAGNET SHAKER(DYN-PM-100)

Output Force(Sinus)	100 N
Output Force(Shock)	200 N
Frequency Range	0-7.5 kHz
Payload(Vertical)	1.5 kg
Displacement(P-P)	10 mm
Maximum Acceleration	60 g
Shaker Weight	7.2 kg
Cooling System	Natural Convection
Operating Temperature Range	5-35 °C
Suspension	Carbon Fiber
Maximum Input Current	6A (RMS)
AMPLIFIER	INTERNAL
Power Supply Voltage	24 V DC
Power Supply Current	5 A
External Signal Voltage Level	1 VAC(PEAK)



System Components : Electrodynamics Shaker + Power Adapter + Signal Cable(BNC-BNC) + R 1/4 Pneumatic Union + M6X10 Stainless Bolt + User Manual + Ground Cable

All dimensions in mm