

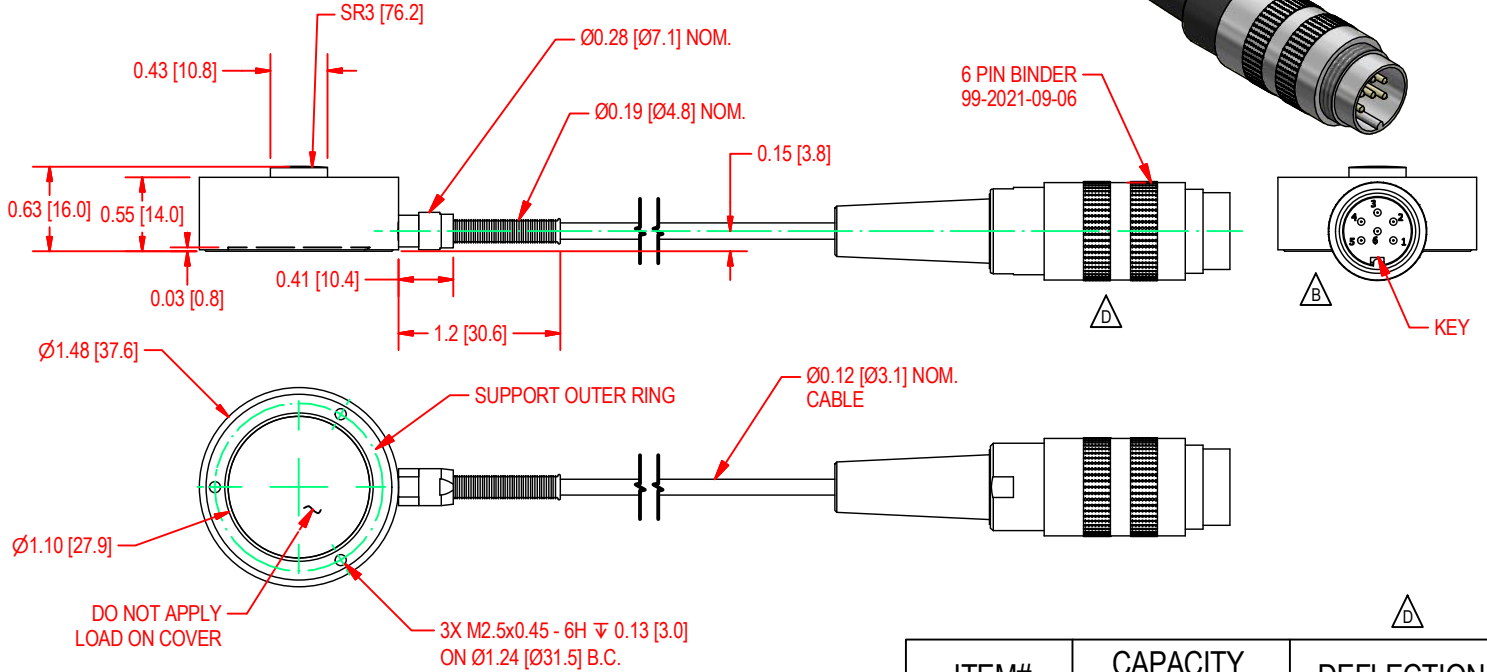
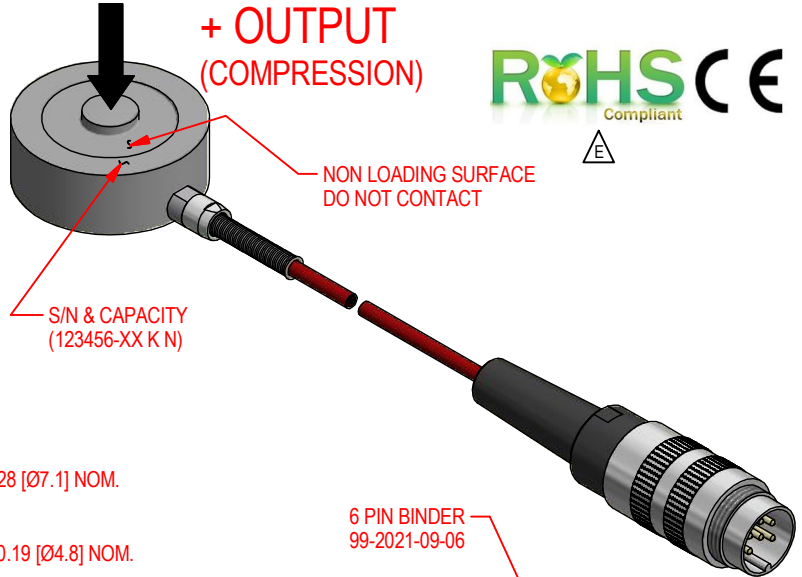
# FUTEK MODEL QLA129 Custom Load Button W/Threaded Mounting Holes

ITEM NUMBER: SEE CHART

INCH [mm] R.O.= Rated Output

WIRING CODE			
+ Excitation	- Excitation	+ Signal	- Signal
(RED) PIN 2	(BLK) PIN 1	(GRN) PIN 4	(WHT) PIN 5
SHIELD * PIN 3 (GND)			

\* Floating At Sensor Body



**SPECIFICATIONS:**

RATED OUTPUT	1 mV/V ±2%
CAPACITY	SEE CHART
SAFE OVERLOAD	150 % of R.O.
ZERO BALANCE	±3% of R.O.
EXCITATION (VDC OR VAC)	18 MAX
BRIDGE RESISTANCE	700 Ω nom.
NONLINEARITY	±0.5% of R.O.
HYSTERESIS	±0.5% of R.O.
NONREPEATABILITY	±0.1% of R.O.
TEMP. SHIFT ZERO	±0.01% of R.O./°F (±0.018 of R.O./°C)
TEMP. SHIFT SPAN	±0.02% of LOAD/°F (±0.036 of LOAD/°C)
COMPENSATED TEMP.	60 to 160 °F (16 to 71 °C)
OPERATING TEMP	-5 to 212 °F (-21 to 100 °C)
MATERIAL	17-4 PHS.S.

CABLE: 26 AWG, 4 Conductor Braided Shield Red Teflon Jacket Cable, 7ft [2.1m] Long w/6 Pin Binder Connector

CE: 2011/65/EU

RoHS Lead Free

CE COMPLIANCE

EN 55011:2009, EN 61326-1:2006

**DSPM Industria**  
sensori & trasduttori

Tel +39 02 48 009 757 Fax +39 02 48 002 070

Via Paolo Uccello 4 - 20148 Milano  
info@dspmindustria.it www.dspmindustria.it

ITEM#	CAPACITY		DEFLECTION
	lb	N	
QSH01902	4496	20000	0.002 (0.051)
QSH01903	11240	50000	0.002 (0.051)

CUSTOMER APPROVAL - COMPANY:

CUSTOMER APPROVAL - NAME / DATE:

REVISIONS: (Refer to dwg # revision sheet)

A	7/24/2003
B	11/2/2004
C	12/9/2005
D	3/30/2013
E	3/17/2017

## OUTLINE DRAWING

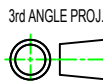
STANDARD NOTES: (Unless Otherwise Specified)

ALL DIMENSIONS ARE IN INCHES  
DRAWING INTERPRETATION DIMS. PER ASME-Y14.5M  
REMOVE BURRS AND BREAK SHARP EDGES .005 - .015  
THREADS PER HANDBOOK H-28  
DIMENSIONS ARE SHOWN AFTER PLATING

ANGLE:  
± 1/2°

CHAMFER:  
± 5°

TOLERANCE:  
X ± 0.1"  
.XX ± 0.01"  
.XXX ± 0.005"



This drawing is submitted solely for the information and exclusive use of the original addressee. It is not to be divulged in whole or in part, by any firm or individual without written permission from:

**FUTEK**

MODEL: <b>QLA129</b>	DWG No.: <b>FO1004-E</b>
DRAWN BY: <i>R. Walker</i>	CREATED DATE: <i>7/11/2003</i>
APPROVED BY: <i>J. Mokhbery</i>	APPROVED DATE: <i>7/11/2003</i>
CHECKED BY:	CAGE: 1X8M6 SHEET: 1 OF 1

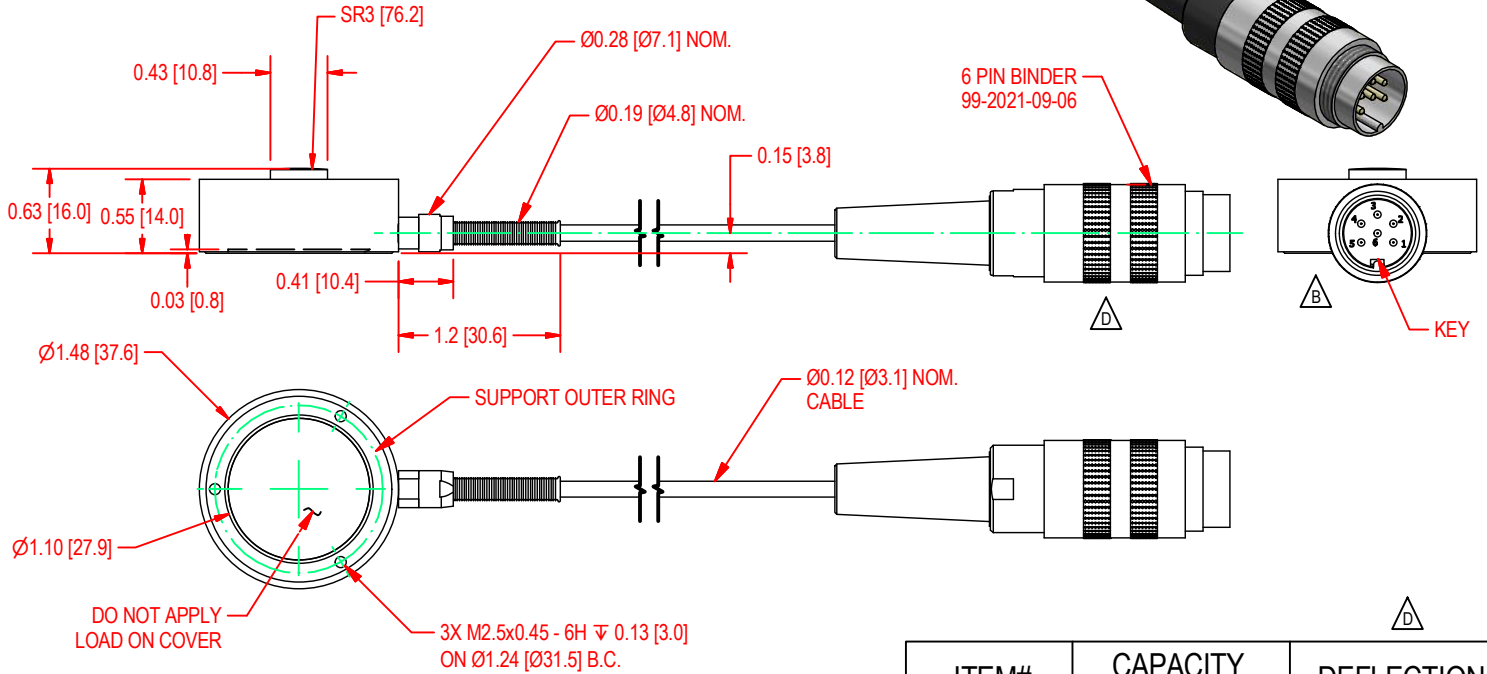
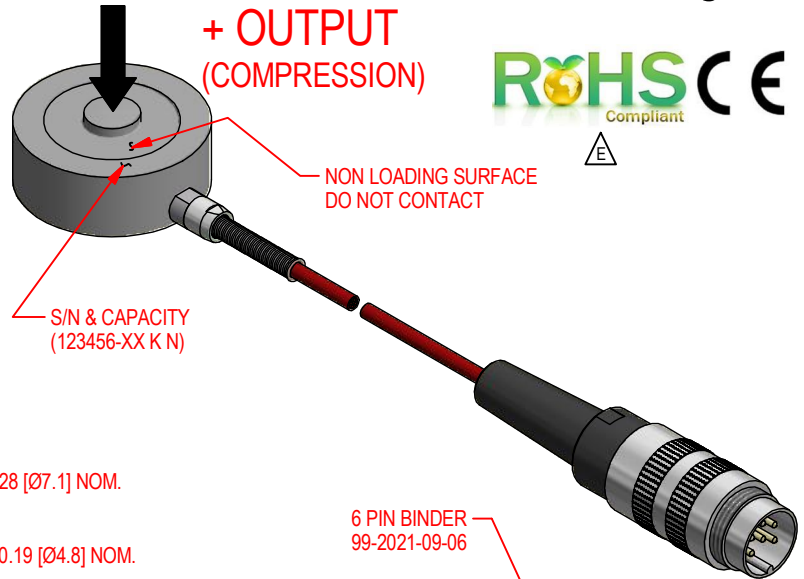
# FUTEK MODEL QLA129 Custom Load Button W/Threaded Mounting Holes

ITEM NUMBER: SEE CHART

INCH [mm] R.O.= Rated Output

WIRING CODE			
+ Excitation	- Excitation	+ Signal	- Signal
(RED) PIN 2	(BLK) PIN 1	(GRN) PIN 4	(WHT) PIN 5
SHIELD * PIN 3 (GND)			

\* Floating At Sensor Body



**SPECIFICATIONS:**

RATED OUTPUT	1 mV/V ±2%
CAPACITY	SEE CHART
SAFE OVERLOAD	150 % of R.O.
ZERO BALANCE	±3% of R.O.
EXCITATION (VDC OR VAC)	18 MAX
BRIDGE RESISTANCE	700 Ω nom.
NONLINEARITY	±0.5% of R.O.
HYSTERESIS	±0.5% of R.O.
NONREPEATABILITY	±0.1% of R.O.
TEMP. SHIFT ZERO	±0.01% of R.O./°F (±0.018 of R.O./°C)
TEMP. SHIFT SPAN	±0.02% of LOAD/°F (±0.036 of LOAD/°C)
COMPENSATED TEMP.	60 to 160 °F (16 to 71 °C)
OPERATING TEMP	-5 to 212 °F (-21 to 100 °C)
MATERIAL	17-4 PH.S.S.

CABLE: 26 AWG, 4 Conductor Braided Shield Red Teflon Jacket Cable, 7ft [2.1m] Long w/6 Pin Binder Connector

CE COMPLIANCE: 2011/65/EU   
 CE COMPLIANCE: YES  
 CE COMPLIANCE: EN 55011:2009, EN 61326-1:2006

ITEM#	CAPACITY		DEFLECTION
	lb	N	
QSH01902	4496	20000	0.002 (0.051)
QSH01903	11240	50000	0.002 (0.051)

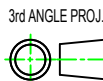
CUSTOMER APPROVAL - COMPANY:

## OUTLINE DRAWING

CUSTOMER APPROVAL - NAME / DATE:

STANDARD NOTES: (Unless Otherwise Specified)  
 ALL DIMENSIONS ARE IN INCHES  
 DRAWING INTERPRETATION DIMS. PER ASME-Y14.5M  
 REMOVE BURRS AND BREAK SHARP EDGES .005 - .015  
 THREADS PER HANDBOOK H-28  
 DIMENSIONS ARE SHOWN AFTER PLATING

ANGLE:  
± 1/2°  
 CHAMFER:  
± 5°  
 TOLERANCE:  
X ± 0.1"  
.XX ± 0.01"  
.XXX ± 0.005"



This drawing is submitted solely for the information and exclusive use of the original addressee. It is not to be divulged in whole or in part, by any firm or individual without written permission from:

## FUTEK

REVISIONS: (Refer to dwg # revision sheet)

A	7/24/2003
B	11/2/2004
C	12/9/2005
D	3/30/2013
E	3/17/2017

MODEL: <b>QLA129</b>	DWG No.: <b>F01004-E</b>
DRAWN BY: R.Walker	CREATED DATE: 7/11/2003
APPROVED BY: J.Mokhberly	APPROVED DATE: 7/11/2003
CHECKED BY:	CAGE: 1X8M6 SHEET: 1 OF 1

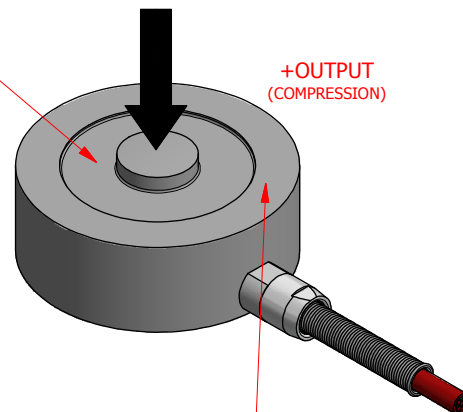
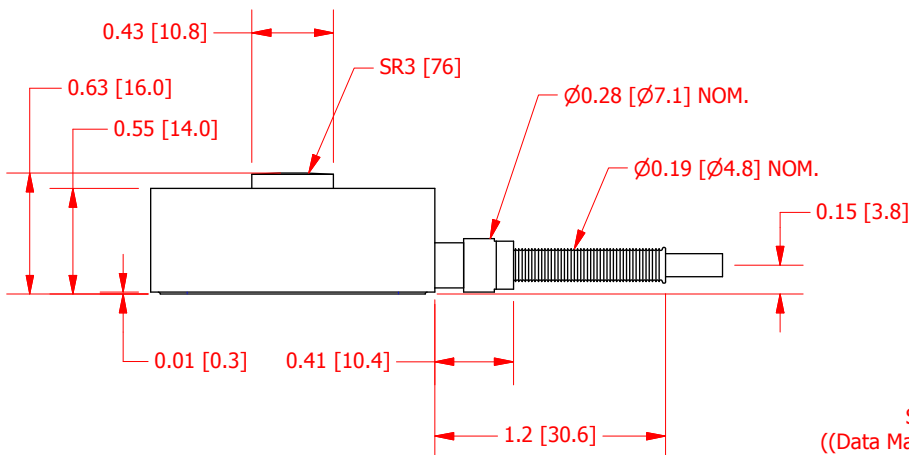
Tel +39 02 48 009 757 Fax +39 02 48 002 070 info@dspmindustria.it www.dspmindustria.it

# FUTEK MODEL QLA129

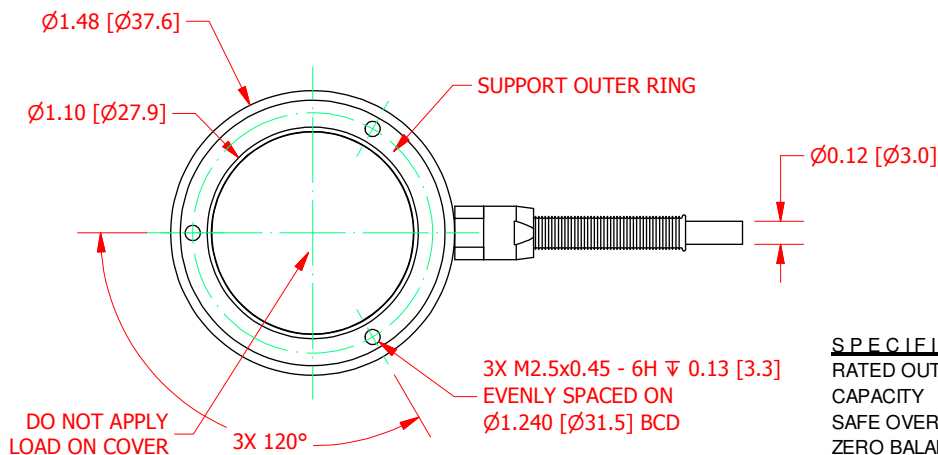
ITEM NUMBER: QSH01942

Custom Load Button w/ Threaded Mounting Holes For Special Operating Range, RoHS Compliant

INCH [mm]		R.O.= Rated Output	
WIRING CODE			
+ Excitation	- Excitation	+Signal	-Signal
RED	BLACK	GREEN	WHITE
Shield			
FLOATING			



S/N, CAPACITY & ITEM NUMBER  
((Data Matrix) 123456 -50K N QSH01942)



### SPECIFICATIONS:

RATED OUTPUT	1 mV/V ± 2%
CAPACITY	11261 lb. [50000 N]
SAFE OVERLOAD	150 % of R.O.
ZERO BALANCE	±3% of R.O.
EXCITATION (VDC OR VAC)	18 MAX
BRIDGE RESISTANCE	700 Ω nom.
NONLINEARITY	±0.5% of R.O.
HYSTERESIS	±0.5% of R.O.
NONREPEATABILITY	±0.1% of R.O.
TEMP. SHIFT ZERO	±0.01% of R.O./°F (±0.018 of R.O./°C)
TEMP. SHIFT SPAN	±0.02% of LOAD/°F (±0.036 of LOAD/°C)
COMPENSATED TEMP.	-60 to 250 °F (-51 to 121 °C)
OPERATING TEMP	-60 to 250 °F (-51 to 121 °C)
MATERIAL	17-4 PH S.S.
CABLE: 26 AWG. 4 Conductor Braided Shielded Teflon Cable, 7ft [2.1m] Long	
RoHS	2011/65/EU

**DSPM Industria**  
sensori & trasduttori

Via Paolo Uccello 4 - 20148 Milano

Tel +39 02 48 009 757 Fax +39 02 48 002 070 info@dspmindustria.it www.dspmindustria.it

CUSTOMER APPROVAL- COMPANY:	<h2>OUTLINE DRAWING</h2>	<p><i>This drawing is submitted solely for the information and exclusive use of the original addressee. It is not to be divulged in whole or in part, by any firm or individual without written permission from:</i></p> <p><b>FUTEK</b></p>
CUSTOMER APPROVAL- NAME / DATE:		
REVISIONS: (Refer to dwg # revision sheet)	<p>STANDARD NOTES: (Unless Otherwise Specified)</p> <p>ALL DIMENSIONS ARE IN INCHES</p> <p>DRAWING INTERPRETATION DIMS. PER ASME-Y14.5M</p> <p>REMOVE BURRS AND BREAK SHARP EDGES .005 - .015</p> <p>THREADS PER HANDBOOK H-28</p> <p>DIMENSIONS ARE SHOWN AFTER PLATING</p> <p>3rd ANGLE PROJ.</p> <p>ANGLE: ± 1/2"</p> <p>CHAMFER: ± 5"</p> <p>TOLERANCE: .X ± 0.1" .XX ± 0.01" .XXX ± 0.005"</p>	<p>MODEL: <b>QLA129</b> DWG No.: <b>FO1453</b></p> <p>DRAWN BY: S. MICHEL CREATED DATE: 11/14/2017</p> <p>APPROVED BY: R. WALKER APPROVED DATE:</p> <p>CHECKED BY:</p>
		<p>CAGE: 1X8M6 SHEET: 1 OF 1</p>