

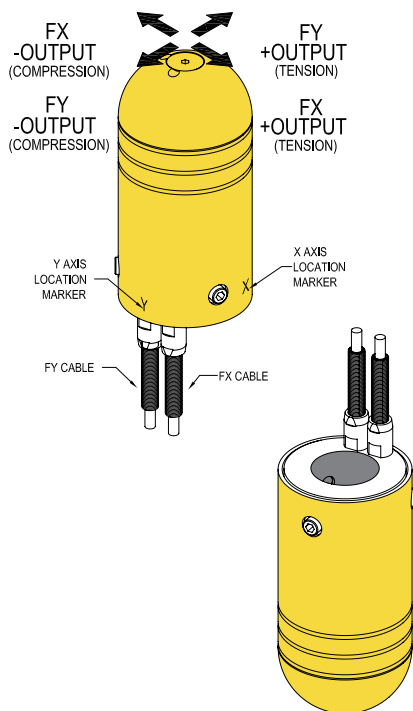


FEATURES

- Ideal for automotive gearshift actuation force measurement applications
- Intended for manual use/human testing
- Ideal for aerospace control stick pull/push force auditing

■ Active end

■ Fixed end



SPECIFICATIONS

PERFORMANCE

Nonlinearity $\pm 0.25\%$ of RO

Nonrepeatability $\pm 0.25\%$ of RO

ELECTRICAL

Rated Output (RO) 2 mV/V nom

Excitation (VDC or VAC) 20 max

Bridge Resistance 350 Ohm nom

Insulation Resistance ≥ 500 MOhm @ 50 VDC

Connection #28 AWG, 4 conductor braided shielded PVC cable
10 ft [3 m] long

Wiring Code WC1

MECHANICAL

Weight 9 oz (255 g)

Safe Overload 150% of RO

Material Aluminum, red anodized

IP Rating IP40

TEMPERATURE

Operating Temperature -40 to 160°F [-40 to 72°C]

Compensated Temperature 60 to 160°F [15 to 72°C]

Temperature Shift Zero $\pm 0.02\%$ of RO/°F [0.036% of RO/°C]

Temperature Shift Span $\pm 0.02\%$ of Load/°F [0.036% of Load/°C]

CALIBRATION

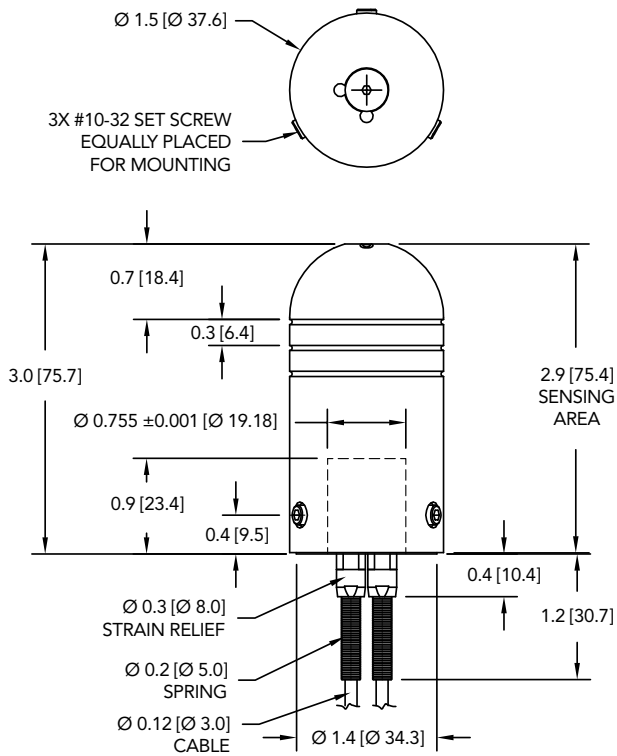
Calibration Test Excitation 10 VDC

Calibration (standard) 5-pt Tension

Calibration (available) 5-pt Compression and Tension

Shunt Calibration Value 60.4 kOhm

DIMENSIONS inches [mm]

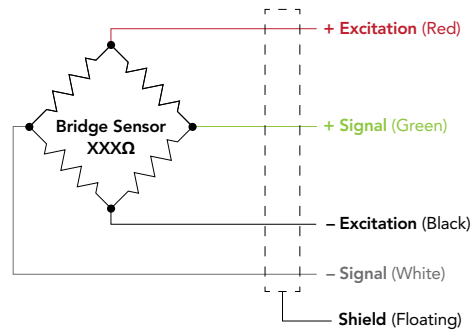


CAPACITIES

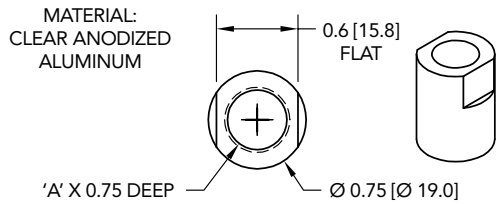
ITEM #	lb	N	Deflection (in) (Fx / Fy)	Natural Frequency (Hz)
FSH04423	100	445	0.009	600
FSH04424	200	890	-	-

WIRING CODE (WC1 WITH SHIELD)

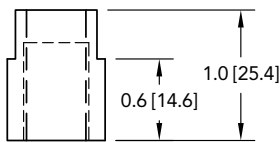
RED	+ EXCITATION
BLACK	- EXCITATION
GREEN	+ SIGNAL
WHITE	- SIGNAL
SHIELD	FLOATING



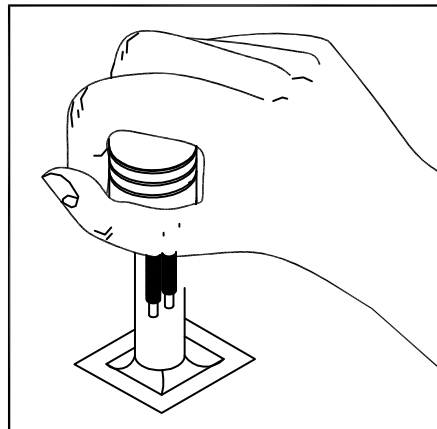
GEAR SHIFT ADAPTER ACCESSORIES



ITEM #	'A'
MCP01427	5/16-18
MCP01428	3/8-16
MCP01429	3/8-24
MCP01430	1/2-20
MCP01432	M10x1.25
MCP01473	M12x1.25



STICK SHIFT APPLICATION



Drawing Number: F11506

FUTEK reserves the right to modify its design and specifications without notice.

www.futek.com



RoHS



U.S. Manufacturer