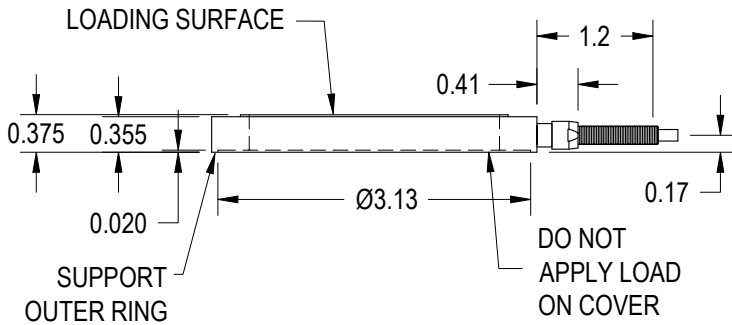
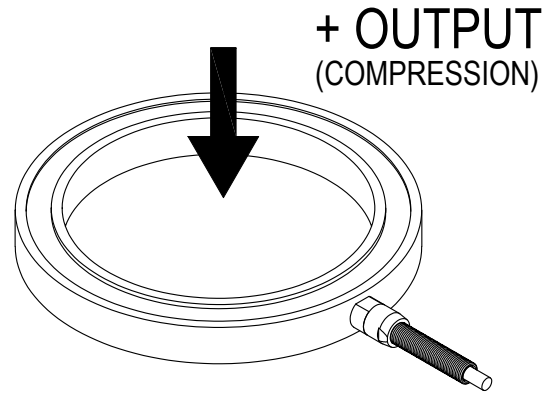
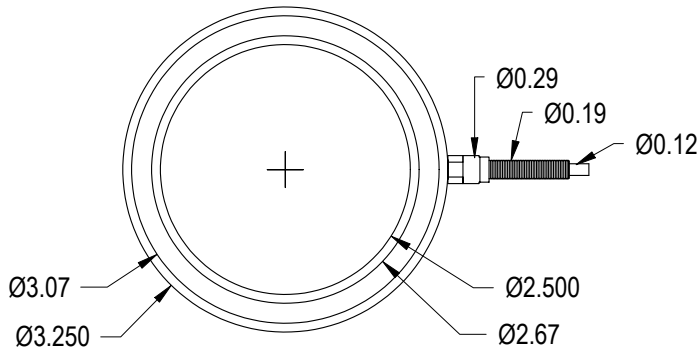


FUTEK MODEL QLA210 DONUT / THRU HOLE LOAD CELL

STOCK NUMBER: QSH00442

INCH (mm)		R.O.= Rated Output	
WIRING CODE			
+Excitation	-Excitation	+Signal	-Signal
RED	BLACK	GREEN	WHITE



NOTE:

WHILE TORQUING BOLTS, HIGH TENSION FORCES WILL OCCUR DURING INSTALLATION, WHICH COULD RESULT IN OVERLOADING THE SENSOR. FUTEK RECOMMENDS CONNECTING SENSOR TO A SYSTEM IN ORDER TO MONITOR THE APPLIED FORCES. FUTEK IS NOT LIABLE OR RESPONSIBLE FOR THE MISHANDLING OF THE SENSOR DURING INSTALLATION.

SPECIFICATIONS:

RATED OUTPUT	2 mV/V nom.
CAPACITY	2000 lbs
SAFE OVERLOAD	150% of R.O.
ZERO BALANCE	±3 of R.O.
EXCITATION (VDC OR VAC)	18 MAX
BRIDGE RESISTANCE	700 Ω nom
NONLINEARITY	±2% of R.O.
NONREPEATABILITY	±0.5% of R.O.
TEMP. SHIFT ZERO	±0.02% of R.O./°F
COMPENSATED TEMP.	60 to 160°F
OPERATING TEMP.	0 to 160°F
WEIGHT	approx 0.25 lb
MATERIAL	17-4 ph S.S.
CABLE: 28 AWG, 4 Conductor Braided Shielded PVC Cable, 10 ft Long	

DSPM Industria
sensori & trasduttori

Tel +39 02 48 009 757 Fax +39 02 48 002 070 Via Paolo Uccello 4 - 20148 Milano info@dspmindustria.it www.dspmindustria.it

MATERIAL:

—

HEAT TREATMENT - FINISH:

—

REVISIONS: (Refer to dwg # revision sheet)

△ XXX

OUTLINE DRAWING

STANDARD NOTES: (Unless Otherwise Specified)

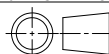
- ALL DIMENSIONS ARE IN INCHES
- DRAWING INTERPRETATION DIMS. PER ASME-Y14.5M
- REMOVE BURRS AND BREAK SHARP EDGES .005 - .015
- THREADS PER HANDBOOK H-28
- DIMENSIONS ARE SHOWN AFTER PLATING

ANGLE:
±1/2°

CHAMFER:
±5°

TOLERANCE:
.XX ±.01
.XXX ±.005

3rd ANGLE PROJ.



This drawing is submitted solely for the information and exclusive use of the original addressee. It is not to be divulged in whole or in part, by any firm or individual without written permission from:

FUTEK
ADVANCED SENSOR TECHNOLOGY, INC.

CAGE: 1X8M6

MODEL: **QLA210**

DWG No.: **FO1059**

DRAWN BY: R. WALKER

CHECKED BY: XXXXX

APPROVED BY: J. VARGAS

DATE: **Aug 25, 2004**