

# FUTEK MODEL QLA253

# Amplified Load Washer Load Cell

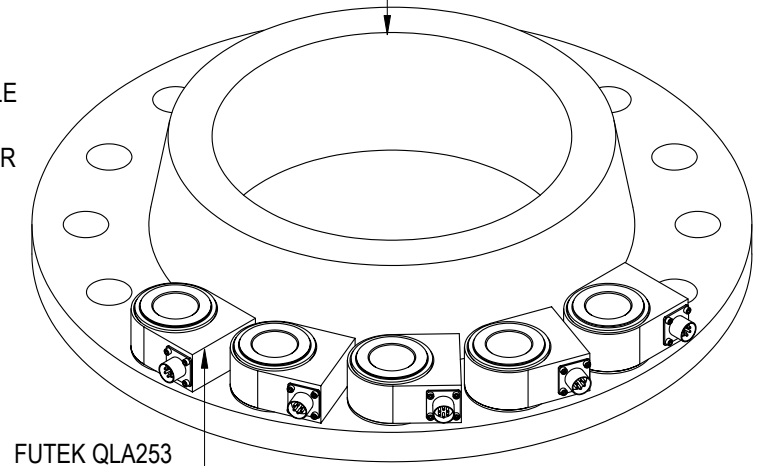
STOCK NUMBER: QSH00682

INCH (mm) | R.O.= Rated Output

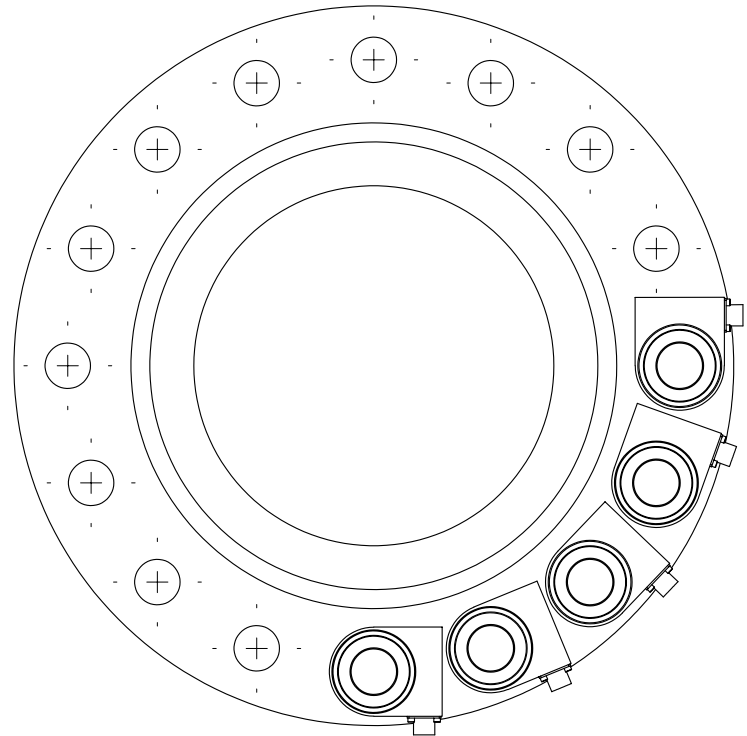
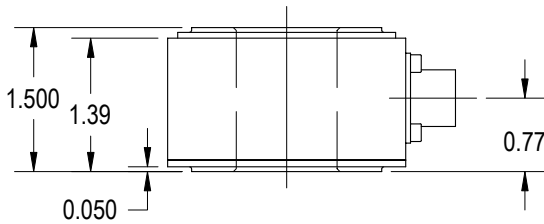
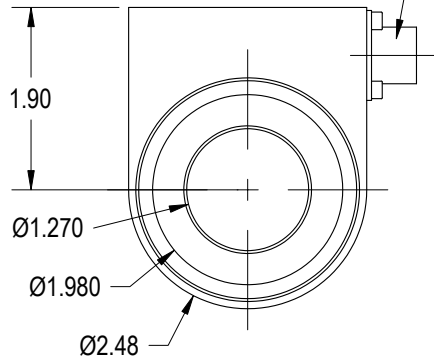
WIRING CODE		
POWER	RETURN	VDC OUTPUT
RED PIN 'A'	BLACK PIN 'B'	GREEN PIN 'C'
TEDS DATA	TEDS GND	⚠
ORANGE PIN E	BLUE PIN F	

B16.5 CLASS #600, 10" PIPE DIA  
WELD NECK FLANGE

BENDIX RECEPTACLE  
PT02A-10-6P  
MATING CONNECTOR  
PT06A-10-6S-SR  
(NOT INCLUDED)



FUTEK QLA253  
LOADCELL



## SPECIFICATIONS:

RATED OUTPUT	⚠ 9 VDC nom
CAPACITY	100000 lbs
SAFE OVERLOAD	150% of R.O.
ZERO BALANCE	0.5 VDC nom
EXCITATION	12-24 VDC
NONLINEARITY	±3% of R.O.
HYSTERESIS	±3% of R.O.
NONREPEATABILITY	±0.5% of R.O.
TEMP. SHIFT ZERO	±0.02% of R.O./°F
TEMP. SHIFT SPAN	±0.02% of LOAD/°F
COMPENSATED TEMP.	60 to 160°F
OPERATING TEMP.	0 to 160°F
WEIGHT	APPROX 2.0 lb
MATERIAL	STAINLESS STEEL
CONNECTOR:	PT02A-10-6P

**DSPM Industria**  
sensori & trasduttori

Via Paolo Uccello 4 - 20148 Milano

Tel +39 02 48 009 757 Fax +39 02 48 002 070 info@dspmindustria.it www.dspmindustria.it

MATERIAL:

—

HEAT TREATMENT - FINISH:

—

REVISIONS: (Refer to dwg # revision sheet)

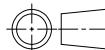
⚠ 1-30-06

## OUTLINE DRAWING

STANDARD NOTES: (Unless Otherwise Specified)

- ALL DIMENSIONS ARE IN INCHES
- DRAWING INTERPRETATION DIMS. PER ASME-Y14.5M
- REMOVE BURRS AND BREAK SHARP EDGES .005 - .015
- THREADS PER HANDBOOK H-28
- DIMENSIONS ARE SHOWN AFTER PLATING

3rd ANGLE PROJ.



ANGLE:

±1/2°

CHAMFER:

±5°

TOLERANCE:

.X ±0.1

.XX ±0.01

.XXX ±0.005

This drawing is submitted solely for the information and exclusive use of the original addressee. It is not to be divulged in whole or in part, by any firm or individual without written permission from:

**FUTEK**

ADVANCED SENSOR TECHNOLOGY, INC.

10 THOMAS  
IRVINE, CA 92618 USA  
Phone: (949) 465-0900  
Fax: (949) 465-0905

CAGE: 1X8M6

MODEL: QLA253

DWG No.: FO1117

DRAWN BY: R. WALKER

CHECKED BY: -

APPROVED BY: J. MOKHBERY

DATE: Jan. 16, 2005