

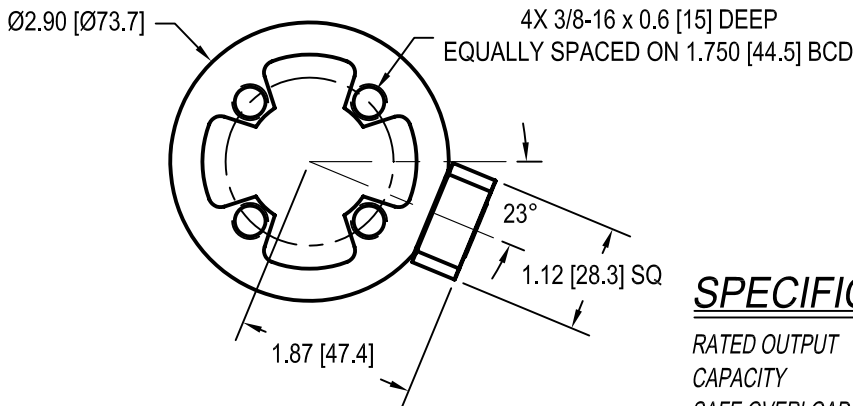
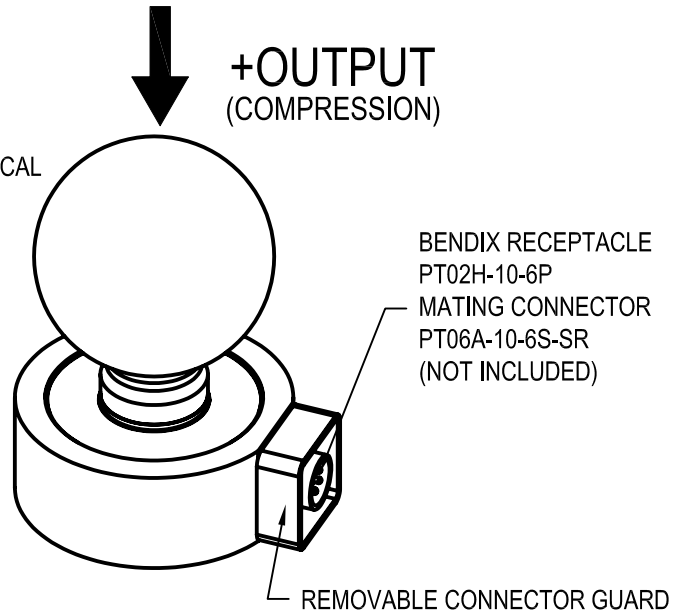
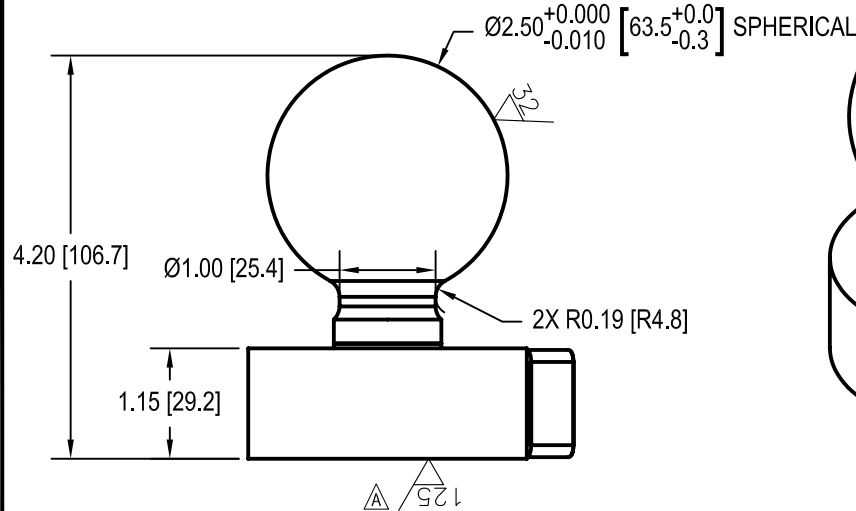
FUTEK MODEL QLA339 Custom Landing Gear Load Cell

ITEM NUMBER: QSH01399

INCH [mm] | R.O.= Rated Output

WIRING CODE

Power	Ground	mA Output	mA Return
PIN 'A' Red	PIN 'B' Black	PIN 'D' White	PIN 'E' Blue



SPECIFICATIONS:

RATED OUTPUT	4-20 mA (3 wire)
CAPACITY	10000 lb [44480 N]
SAFE OVERLOAD	150% of R.O.
ZERO BALANCE	±3% of R.O.
EXCITATION	13-30 VDC @ 42 mA min
NONLINEARITY	±0.25% of R.O.
HYSTERESIS	±0.25% of R.O.
NONREPEATABILITY	±0.1% of R.O.
TEMP. SHIFT ZERO	±0.02% of R.O./°F (0.036% of R.O./°C)
TEMP. SHIFT SPAN	±0.01% of LOAD/°F (0.018% of LOAD/°C)
COMPENSATED TEMP.	60 to 160°F (15 to 71°C)
OPERATING TEMP.	32 to 200°F (0 to 93°C)
WEIGHT	approx 4.5 lb (2040 g)
MATERIAL	17-4ph S.S.
CONNECTOR:	PT02H-10-6P

DSPM Industria
sensori & trasduttori

Via Paolo Uccello 4 - 20148 Milano
Tel +39 02 48 009 757 Fax +39 02 48 002 070
info@dspmindustria.it www.dspmindustria.it

OUTLINE DRAWING

STANDARD NOTES: (Unless Otherwise Specified)

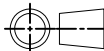
- ALL DIMENSIONS ARE IN INCHES
- DRAWING INTERPRETATION DIMS. PER ASME-Y14.5M
- REMOVE BURRS AND BREAK SHARP EDGES .005 - .015
- THREADS PER HANDBOOK H-28
- DIMENSIONS ARE SHOWN AFTER PLATING

ANGLE:
±1/2°

CHAMFER:
±5°

TOLERANCE:
.X ±0.1
.XX ±0.01
.XXX ±0.005

3rd ANGLE PROJ.



This drawing is submitted solely for the information and exclusive use of the original addressee. It is not to be divulged in whole or in part, by any firm or individual without written permission from:

FUTEK
ADVANCED SENSOR TECHNOLOGY, INC.

CAGE: 1X8M6

MODEL: **QLA339**

DWG No.: **FO1276-A**

DRAWN BY: **R. WALKER**

CHECKED BY: **J. VARGAS**

APPROVED BY: -

DATE: **Sept 15, 2010**

REVISIONS: (Refer to dwg # revision sheet)
A 9-27-10

CUSTOMER APPROVAL-COMPANY

CUSTOMER APPROVAL-NAME /DATE