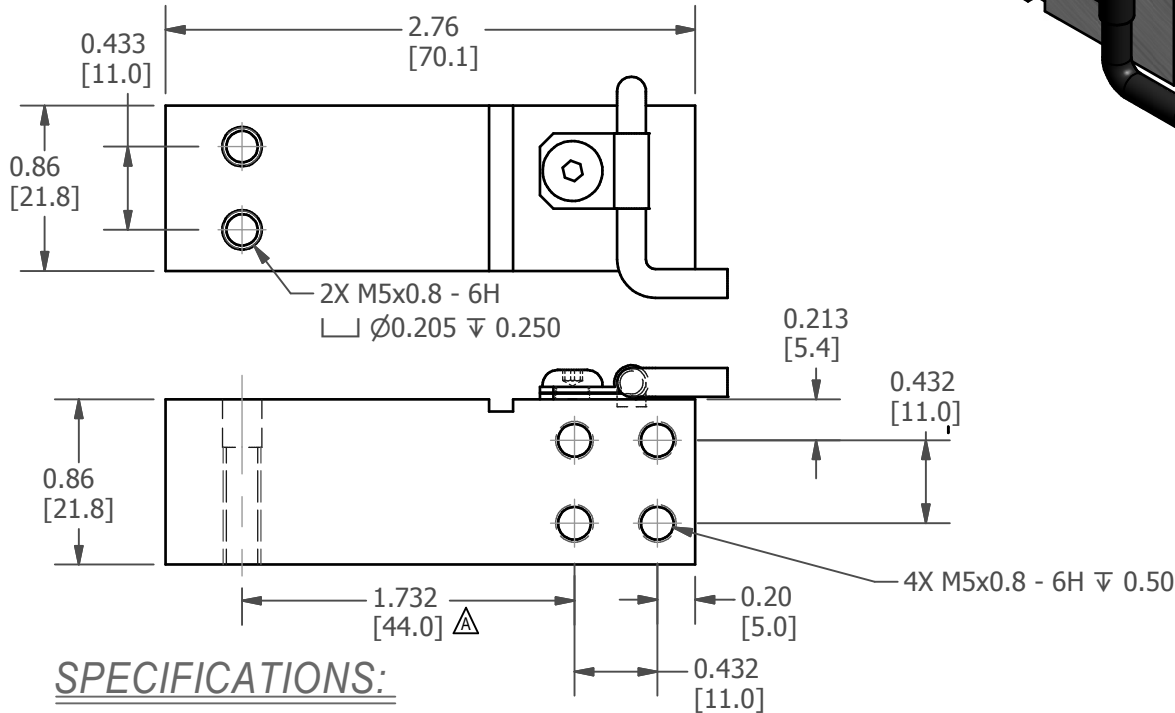
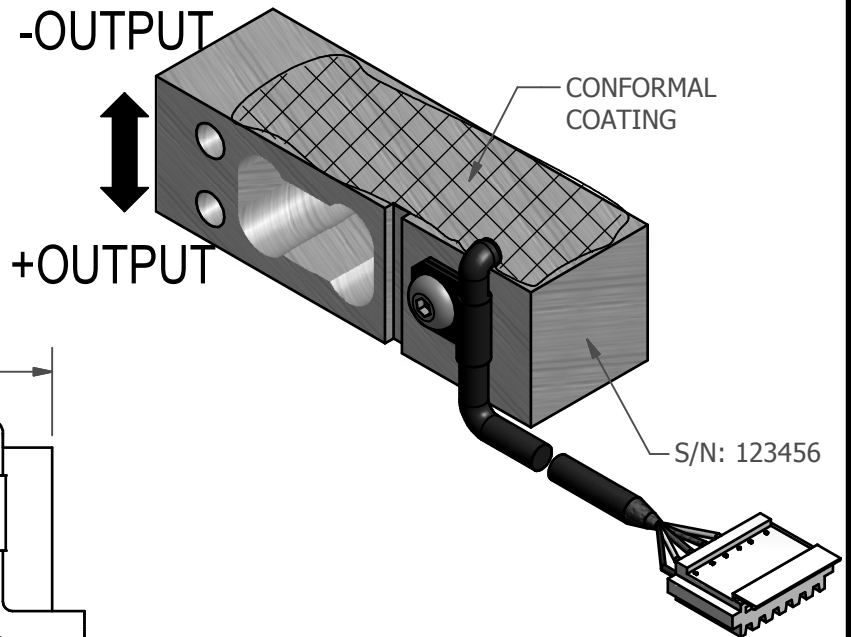


FUTEK MODEL QLA348

PARALLEL BEAM LOAD CELL

ITEM NUMBER: QSH01485

INCH (mm)	R.O.= Rated Output		
WIRING CODE			
+Excitation	-Excitation	+Signal	-Signal
RED (PIN 3)	WHITE (PIN 2)	BLUE (PIN 1)	GREEN (PIN 5)
Shield			
Floating (PIN 4)			



SPECIFICATIONS:

RATED OUTPUT	2 mV/V nom.
CAPACITY	175lb (778 N)
SAFE OVERLOAD	▲ 150 % of R.O.
ZERO BALANCE	± 2% of R.O.
EXCITATION (VDC OR VAC)	18 MAX
BRIDGE RESISTANCE	350Ω nom
NONLINEARITY	± 0.05% of R.O.
HYSTERESIS	± 0.05% of R.O.
NONREPEATABILITY	± 0.01% of R.O.
TEMP. SHIFT ZERO	± 0.01% of R.O./ °F (± 0.018% of R.O./ °C)
TEMP. SHIFT SPAN	± 0.01% of LOAD/ °F (± 0.018% of LOAD/ °C)
COMPENSATED TEMP.	60 to 160 °F (15 to 71 °C)
OPERATING TEMP.	0 to 160 °F (-18 to 71 °C)
WEIGHT	APPROX 0.2 lb (91 g)
MATERIAL	ALUMINUM

CABLE: 26 Awg 6 Conductor Foil Shielded PVC Cable , 38 in. Long with 6 pin JST female connector

DSPM Industria*
sensori & trasduttori

Via Paolo Uccello, 4 - 20148 Milano
Tel +39 02 48 009 757 Fax +39 02 48 002 070
info@dspmindustria.it www.dspmindustria.it

CUSTOMER APPROVAL- COMPANY:

CUSTOMER APPROVAL- NAME / DATE:

REVISIONS: (Refer to dwg # revision sheet)

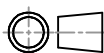
A	4/4/2011
---	----------

OUTLINE DRAWING

STANDARD NOTES: (Unless Otherwise Specified)

ALL DIMENSIONS ARE IN INCHES
DRAWING INTERPRETATION DIMS. PER ASME-Y14.5M
REMOVE BURRS AND BREAK SHARP EDGES .005 - .015
THREADS PER HANDBOOK H-28
DIMENSIONS ARE SHOWN AFTER PLATING

3rd ANGLE PROJ.



ANGLE:
± 1/2°

CHAMFER:
± 5°

TOLERANCE:
.X ± 0.1"
.XX ± 0.01"
.XXX ± 0.005"

This drawing is submitted solely for the information and exclusive use of the original addressee. It is not to be divulged in whole or in part, by any firm or individual without written permission from:

FUTEK
ADVANCED SENSOR TECHNOLOGY, INC.

MODEL: QLA348	DWG No.: FO1288-A
DRAWN BY: <i>R. Walker</i>	CREATED DATE: <i>3/21/2011</i>
APPROVED BY: <i>J. VARGAS</i>	APPROVED DATE: <i>3/23/2011</i>
CHECKED BY:	CAGE: 1X8M6 SHEET: 1 OF 1