

FUTEK MODEL QLA368

ITEM NUMBER: SEE CHART

Custom Beam Load Cell

INCH [mm]		R.O.= Rated Output	
WIRING CODE (WC1)			
+ Excitation	- Excitation	+ Signal	- Signal
RED	BLACK	GREEN	WHITE
CHART			
Shield			
FLOATING			

SEE CHART FOR ITEM # ENGRAVING

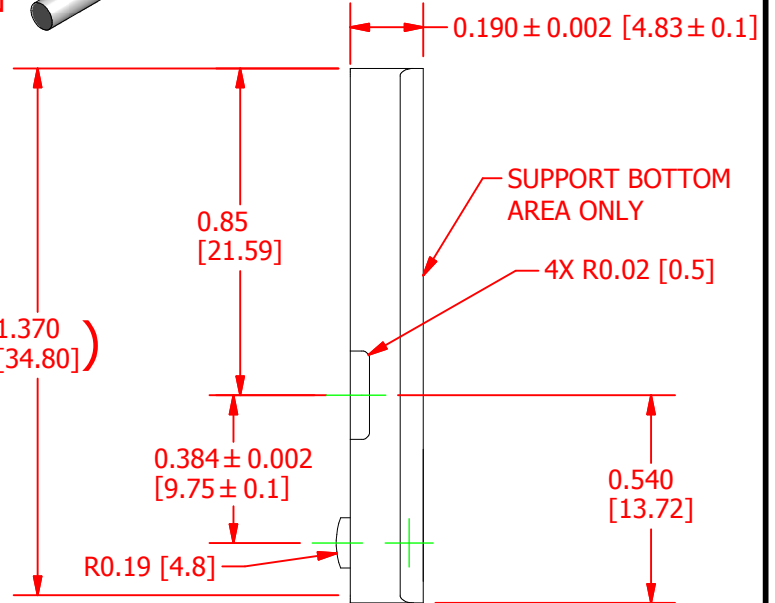
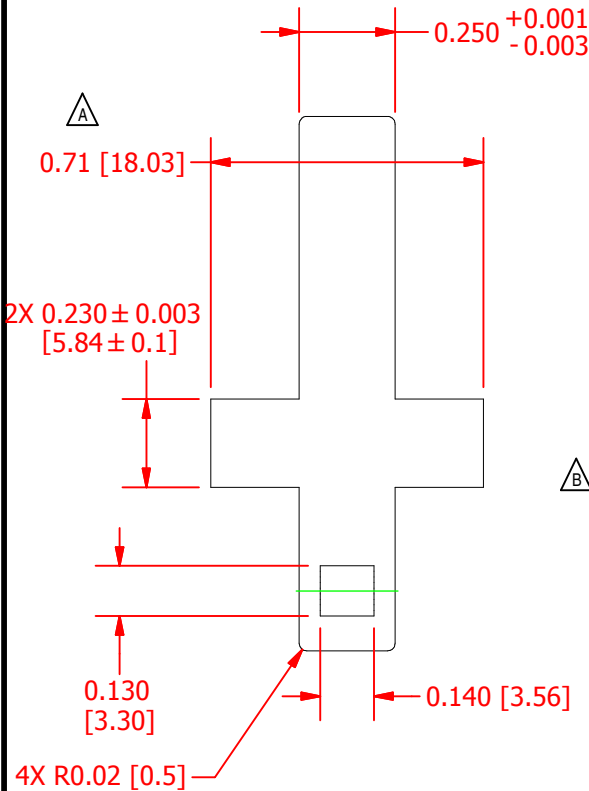


+ OUTPUT
(COMPRESSION)

LOADING SURFACE

Ø0.047 [1.19] NOM. CABLE
5' LONG

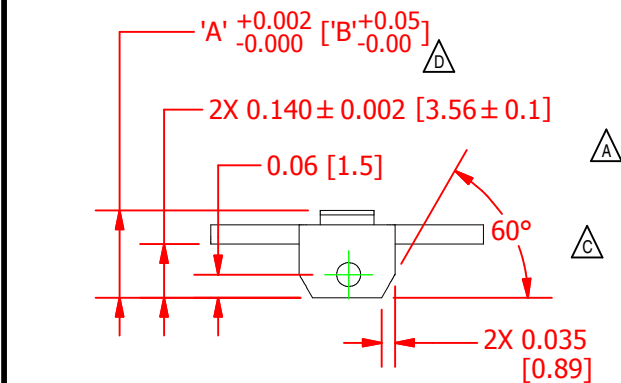
SMALL SPOT ON QSH01726
FOR VISUAL IDENTIFICATION
PURPOSES



SPECIFICATIONS:

RATED OUTPUT	1.5 mV/V nom.
CAPACITY	40 lb [177.9 N]
SAFE OVERLOAD	150% of R.O.
ZERO BALANCE	±5% of R.O.
EXCITATION (VDC OR VAC)	10 MAX
BRIDGE RESISTANCE	350 Ω nom
NONLINEARITY	±1% of R.O.
HYSTERESIS	±1% of R.O.
NONREPEATABILITY	±0.1% of R.O.
TEMP. SHIFT ZERO	±0.02% of R.O./°F (±0.036 of R.O./°C)
TEMP. SHIFT SPAN	±0.02% of LOAD/°F (±0.036 of LOAD/°C)
COMPENSATED TEMP.	60 to 160 °F (16 to 71 °C)
OPERATING TEMP	-40 to 200 °F (-40 to 93 °C)
WEIGHT (approx)	3 oz
MATERIAL	17-4ph S.S. Flexure
CABLE: #34 Awg, 4 Conductor Teflon, S.S. Braided Shielded Cable, 5 ft [1.5m] Long	

CHART	
Item Number	'A' ['B']
QSH01640	0.227 [5.77]
QSH01726	0.217 [5.51]



DSPM *Industria*
sensori & trasduttori

Via Paolo Uccello 4 - 20148 Milano
Tel + 39 02 48 009 757 Fax + 39 02 48 002 070
info@dspmindustria.it www.dspmindustria.it

CUSTOMER APPROVAL- COMPANY:

CUSTOMER APPROVAL- NAME / DATE:

REVISIONS: (Refer to dwg # revision sheet)

A	12/19/12
B	12/21/12
C	1/11/13
D	1/14/2015

OUTLINE DRAWING

STANDARD NOTES: (Unless Otherwise Specified)

ALL DIMENSIONS ARE IN INCHES
DRAWING INTERPRETATION DIMS. PER ASME-Y14.5M
REMOVE BURRS AND BREAK SHARP EDGES .005 - .015
THREADS PER HANDBOOK H-28
DIMENSIONS ARE SHOWN AFTER PLATING

3rd ANGLE PROJ.



ANGLE:
± 1/2°

CHAMFER:
± 5°

TOLERANCE:
.X ± 0.1"
.XX ± 0.01"
.XXX ± 0.005"

This drawing is submitted solely for the information and exclusive use of the original addressee. It is not to be divulged in whole or in part, by any firm or individual without written permission from:

FUTEK
ADVANCED SENSOR TECHNOLOGY, INC.

MODEL: QLA368	DWG No.: FO1336-D
DRAWN BY: <i>E. Pano</i>	CREATED DATE: 12/11/2012
APPROVED BY: <i>R. Walker</i>	APPROVED DATE: 12/11/2012
CHECKED BY:	CAGE: 1X8M6 SHEET: 1 OF 1