

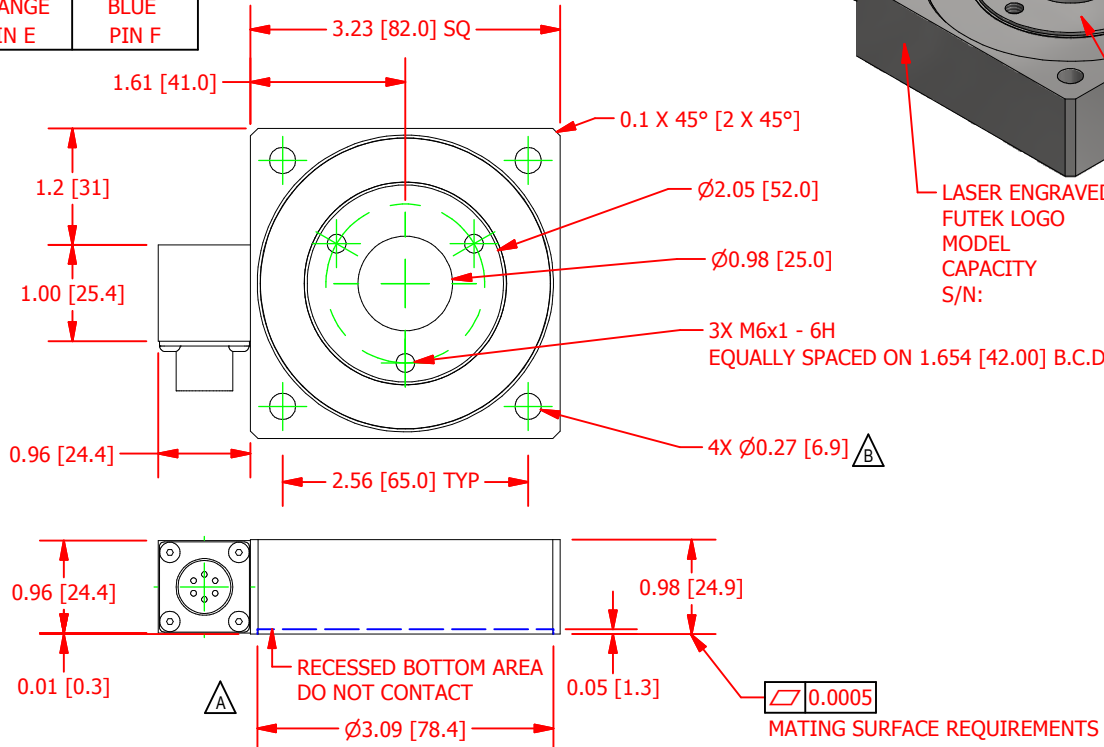
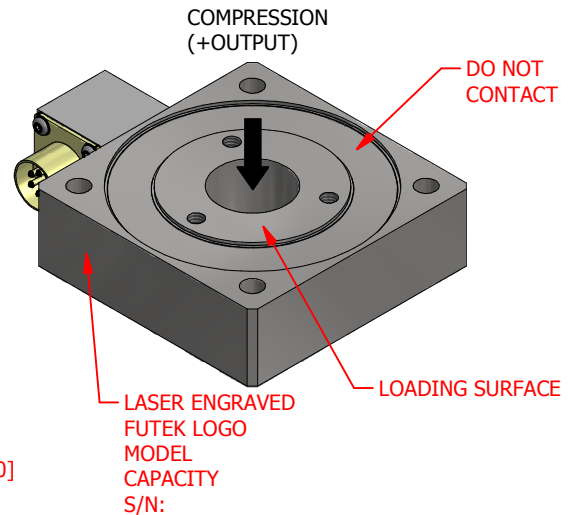
# FUTEK MODEL QLA370

# CUSTOM COMPRESSION LOADCELL

ITEM NUMBER: QSH01650

INCH [mm] | R.O. = Rated Output

WIRING CODE			
+ Excitation	- Excitation	+ Signal	- Signal
RED PIN A	BLACK PIN B	GREEN PIN C	WHITE PIN D
+ Sense	-Sense		
ORANGE PIN E	BLUE PIN F		



## SPECIFICATIONS:

RATED OUTPUT	2 mV/V nom.
CAPACITY	1200 lb [5.338kN]
SAFE OVERLOAD	150% of R.O.
ZERO BALANCE	±5% of R.O.
EXCITATION (VDC OR VAC)	18 MAX
BRIDGE RESISTANCE	350 Ω nom
NONLINEARITY	±0.5% of R.O.
HYSTERESIS	±0.5% of R.O.
NONREPEATABILITY	±0.2% of R.O.
TEMP. SHIFT ZERO	±0.01% of R.O./°F (±0.018 of R.O./°C)
TEMP. SHIFT SPAN	±0.01% of LOAD/°F (±0.018 of LOAD/°C)
COMPENSATED TEMP.	60 to 160 °F (16 to 71 °C)
OPERATING TEMP	-40 to 200 °F (-40 to 93 °C)
WEIGHT (approx)	2 lb
MATERIAL	17-4ph S.S.
CONNECTOR: 6 PIN BENDIX, PT02E-10-6P	

**DSPM Industria\***  
sensori & trasduttori

Via Paolo Uccello 4 - 20148 Milano  
Tel + 39 02 48 009 757 Fax + 39 02 48 002 070  
info@dspmindustria.it www.dspmindustria.it

CUSTOMER APPROVAL- COMPANY:

## OUTLINE DRAWING

This drawing is submitted solely for the information and exclusive use of the original addressee. It is not to be divulged in whole or in part, by any firm or individual without written permission from:

**FUTEK**  
ADVANCED SENSOR TECHNOLOGY, INC.

CUSTOMER APPROVAL- NAME / DATE:

STANDARD NOTES: (Unless Otherwise Specified)

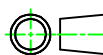
REVISIONS: (Refer to dwg # revision sheet)

ALL DIMENSIONS ARE IN INCHES  
DRAWING INTERPRETATION DIMS. PER ASME-Y14.5M  
REMOVE BURRS AND BREAK SHARP EDGES .005 - .015  
THREADS PER HANDBOOK H-28  
DIMENSIONS ARE SHOWN AFTER PLATING

ANGLE:  
± 1/2°

CHAMFER:  
± 5°

TOLERANCE:  
.X ± 0.1"  
.XX ± 0.01"  
.XXX ± 0.005"



MODEL: **QLA370** DWG No.: **FO1339-B**

DRAWN BY: R. Walker CREATED DATE: 2/18/2013

APPROVED BY: APPROVED DATE:

CHECKED BY: J. Vargas CAGE: 1X8M6 SHEET: 1 OF 1