

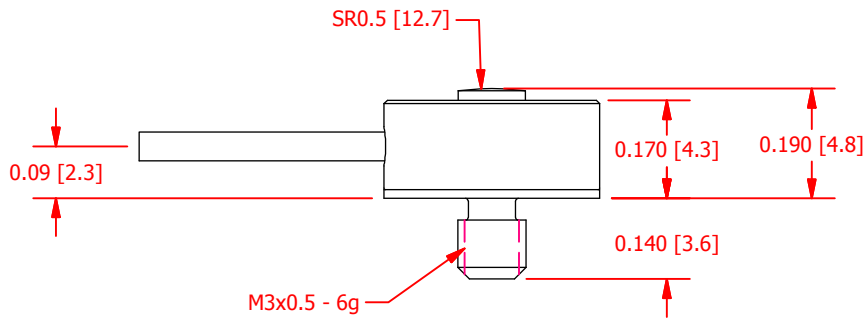
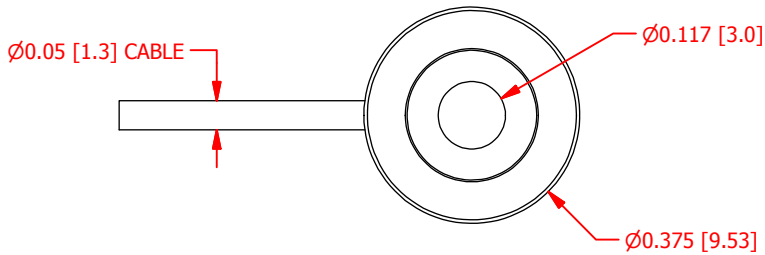
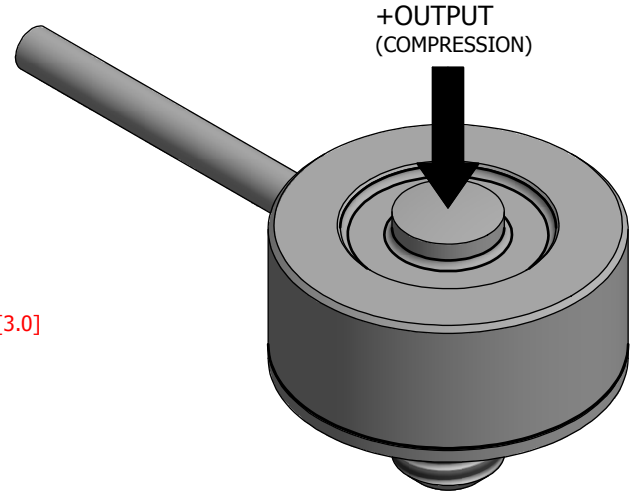
# FUTEK MODEL QLA385

ITEM NUMBER: QSH01788

## Compression Custom Loadbutton with M3x0.5 Mounting Stud

INCH [mm] | R.O. = Rated Output

WIRING CODE			
+ Excitation	- Excitation	+ Signal	- Signal
RED	BLACK	GREEN	WHITE
Shield			
GROUNDED			



RATED OUTPUT	1.5 mV/V nom
CAPACITY	100 lb
SAFE OVERLOAD	125% of R.O.
ZERO BALANCE	±6% of R.O.
EXCITATION (VDC OR VAC)	7 MAX
BRIDGE RESISTANCE	350 $\Omega$ nom
NONLINEARITY	±0.5% of R.O.
HYSTERESIS	±0.5% of R.O.
NONREPEATABILITY	±0.1% of R.O.
TEMP. SHIFT ZERO	±0.02% of R.O./°F (±0.036 of R.O./°C)
TEMP. SHIFT SPAN	±0.02% of LOAD/°F (±0.036 of LOAD/°C)
COMPENSATED TEMP.	60 to 160 °F (15 to 71 °C)
OPERATING TEMP	-60 to 200 °F (-51 to 93 °C)
MATERIAL	17-4 PH S.S
IP RATING	IP61
CABLE:	34 Awg, 4 Conductor Braided Shielded Cable, 5 ft Long

**dspm** Industria<sup>®</sup>  
sensori & trasduttori

Via Paolo Uccello 4 - 20148 Milano

Tel +39 02 48 009 757 Fax +39 02 48 002 070

info@dspmindustria.it www.dspmindustria.it

CUSTOMER APPROVAL- COMPANY:

## OUTLINE DRAWING

This drawing is submitted solely for the information and exclusive use of the original addressee. It is not to be divulged in whole or in part, by any firm or individual without written permission from:

**FUTEK**  
ADVANCED SENSOR TECHNOLOGY, INC.

CUSTOMER APPROVAL- NAME / DATE:

STANDARD NOTES: (Unless Otherwise Specified)

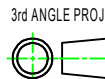
REVISIONS: (Refer to dwg # revision sheet)

ALL DIMENSIONS ARE IN INCHES  
DRAWING INTERPRETATION DIMS. PER ASME-Y14.5M  
REMOVE BURRS AND BREAK SHARP EDGES .005 - .015  
THREADS PER HANDBOOK H-28  
DIMENSIONS ARE SHOWN AFTER PLATING

ANGLE:  
± 1/2°

CHAMFER:  
± 5°

TOLERANCE:  
.X ± 0.1"  
.XX ± 0.01"  
.XXX ± 0.005"



MODEL: <b>QLA385</b>	DWG No.: <b>F01387-A</b>
DRAWN BY: R. Walker	CREATED DATE: 3/19/2015
APPROVED BY: J. Vargas	APPROVED DATE: 7/21/2016
CHECKED BY:	CAGE: 1X8M6 SHEET: 1 OF 1