

# FUTEK MODEL QLA413

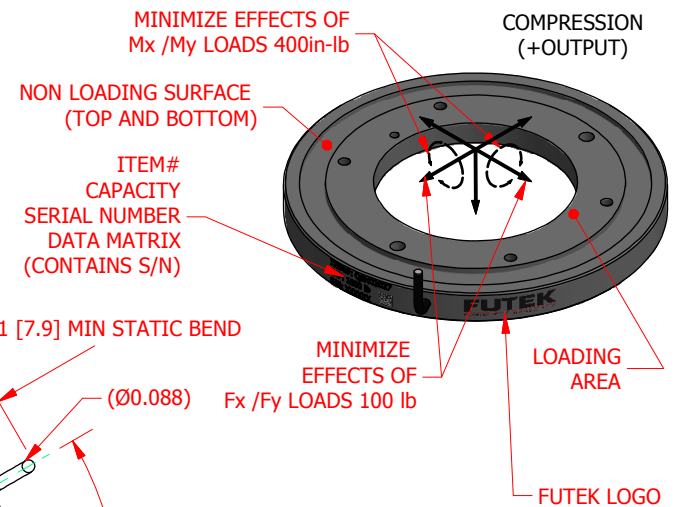
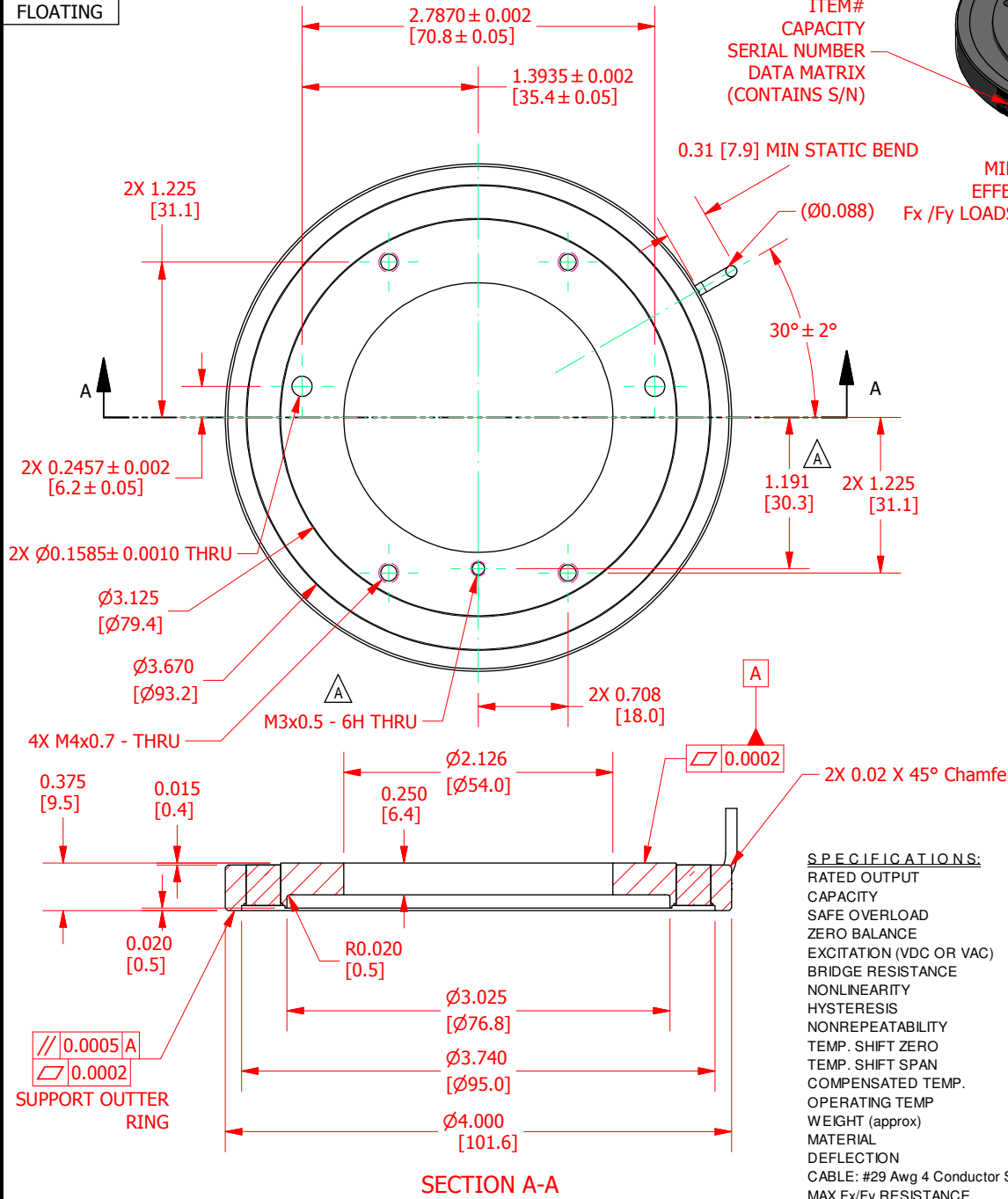
## Custom 54mm ID Thru Hole Load Cell

ITEM NUMBER: QSH02027

DESIGNED TO MINIMIZE THE EFFECTS OF SHEAR (Fx and Fy) AND MOMENT (Mx and My) LOADS

INCH [mm] | R.O. = Rated Output

WIRING CODE (WC1)			
+ Excitation	- Excitation	+ Signal	- Signal
RED	BLACK	GREEN	WHITE
Shield			
FLOATING			



**SPECIFICATIONS:**

RATED OUTPUT	3 mV/V nom.
CAPACITY	1000 lb. [4440N]
SAFE OVERLOAD	150 % of R.O.
ZERO BALANCE	±5% of R.O.
EXCITATION (VDC OR VAC)	15 MAX
BRIDGE RESISTANCE	700 Ω nom.
NONLINEARITY	±1% of R.O.
HYSTERESIS	±1% of R.O.
NONREPEATABILITY	±0.5% of R.O.
TEMP. SHIFT ZERO	±0.01% of R.O./°F (±0.018 of R.O./°C)
TEMP. SHIFT SPAN	±0.02% of LOAD/°F (±0.036 of LOAD/°C)
COMPENSATED TEMP.	50 to 100 °F (10 to 38 °C)
OPERATING TEMP.	-60 to 200 °F (-51 to 93 °C)
WEIGHT (approx)	0.75 lb [340.1 g]
MATERIAL	17-4 PH S.S.
DEFLECTION	0.003 [0.013] nom.
CABLE: #29 Awg 4 Conductor Spiral Shielded Silicone Cable, 10 ft [3.0 m] Long	
MAX Fx/Fy RESISTANCE	100 lb
MAX Mx/My RESISTANCE	400 in-lb

CUSTOMER APPROVAL- COMPANY:	
CUSTOMER APPROVAL- NAME / DATE:	
REVISIONS: (Refer to dwg # revision sheet)	
A	8/17/2018

## OUTLINE DRAWING

STANDARD NOTES: (Unless Otherwise Specified)

ALL DIMENSIONS ARE IN INCHES  
DRAWING INTERPRETATION DIMS. PER ASME-Y14.5M  
REMOVE BURRS AND BREAK SHARP EDGES .005 - .015  
THREADS PER HANDBOOK H-28  
DIMENSIONS ARE SHOWN AFTER PLATING

3rd ANGLE PROJ.

ANGLE: ± 1/2°  
CHAMFER: ± 5°  
TOLERANCE:  
.X ± 0.1"  
.XX ± 0.01"  
.XXX ± 0.005"

*This drawing is submitted solely for the information and exclusive use of the original addressee. It is not to be divulged in whole or in part, by any firm or individual without written permission from:*

MODEL: <b>QLA413</b>	DWG No.: <b>F01473-A</b>
DRAWN BY: S. MICHEL	CREATED DATE: 8/16/2018
APPROVED BY: R. WALKER	APPROVED DATE: 8/16/2018
CHECKED BY:	CAGE: 1X8M6 SHEET: 1 OF 1

