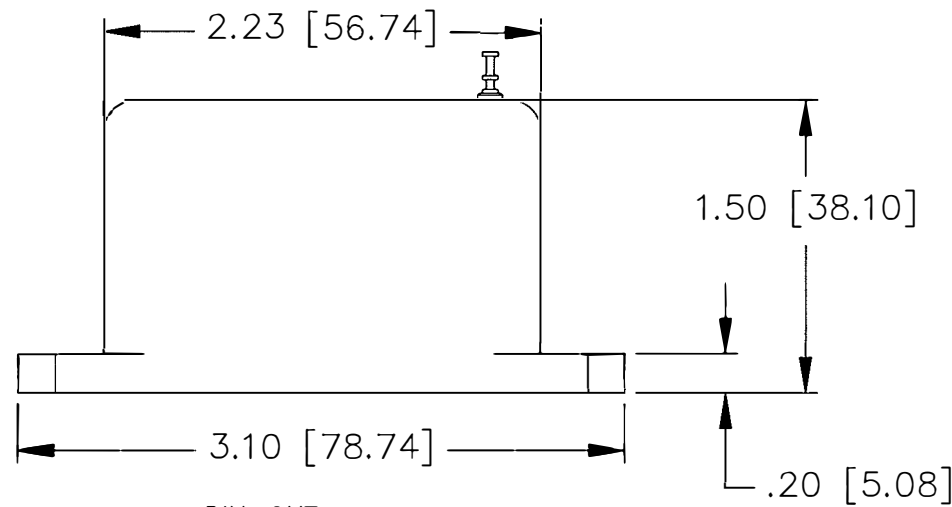
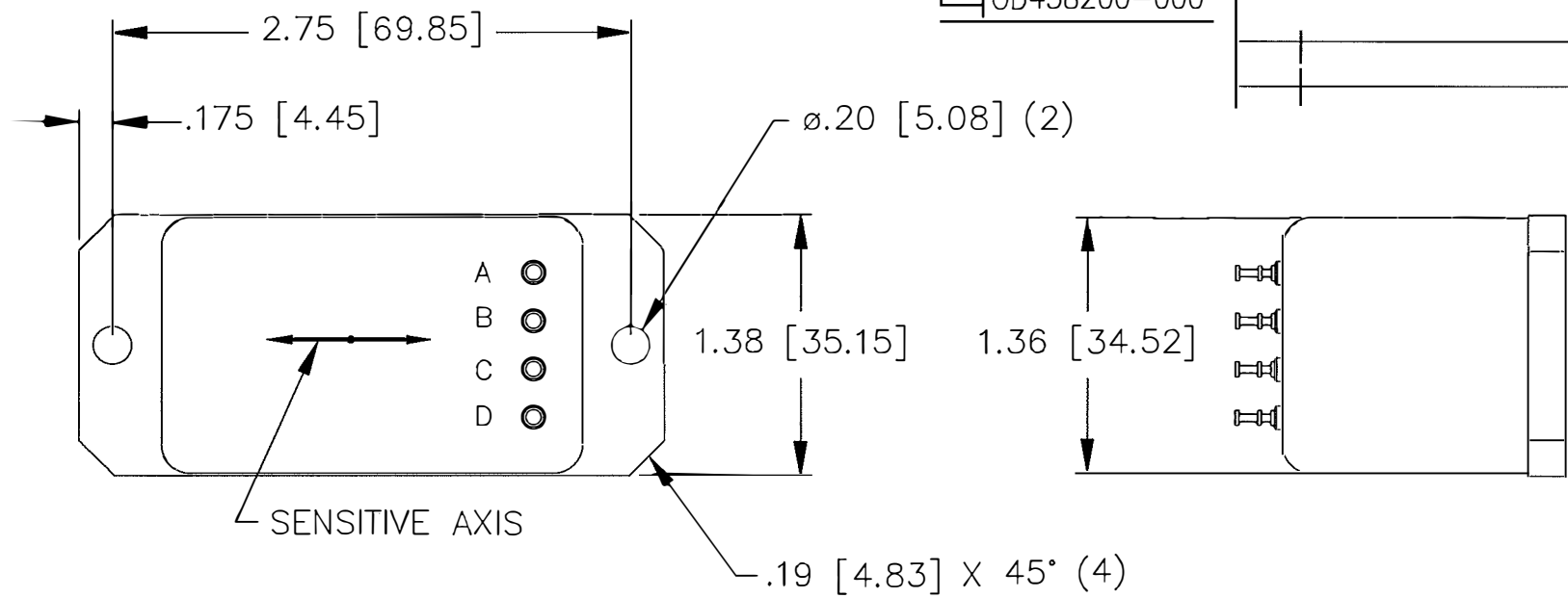


DWG. NO. **A** OD458200-000



PIN-OUT

PIN A	+12 TO +18 VDC
PIN B	-12 TO -18 VDC
PIN C	POWER/SIG COM
PIN D	SIG OUTPUT

DSPM Industria®
sensori & trasduttori

Via Paolo Uccello 4 - 20148 Milano
Tel +39 02 48 009 757 Fax +39 02 48 002 070
info@dspmindustria.it www.dspmindustria.it

TOLERANCE UNLESS SPECIFIED		DRAWN BY DAP 9-17-12
TWO PLACE DECIMALS	(.00) ± .01	CHECKED BY <i>[Signature]</i> 9-17-12
THREE PLACE DECIMALS	(.000) ± .005	ENGINEER <i>[Signature]</i> 9-17-12
ANGLES ± 1°		USED ON NEXT ASSY
RAW MATERIAL - COMMERCIAL STANDARD		
DIMENSIONS ARE IN INCHES.		
MATERIAL		
FINISH		
THIS DRAWING COVERS A PROPRIETARY ITEM AND IS THE PROPERTY OF JEWELL ELECTRICAL INSTRUMENTS INC. THIS DRAWING IS NOT TO BE COPIED OR USED WITHOUT PERMISSION.		

OUTLINE, ACCEL
LCF-200 SERIES

JEWELL	
JEWELL INSTRUMENTS LLC	
MANCHESTER	NEW HAMPSHIRE
DWG. NO.	
OD458200-000	
CAT. NO.	
SCALE	EPA NO. 11778
CODE 33005	