

**ELECTRICAL OPTIONS/ SPECIFICATIONS**

**OUTPUT SUPPLY**

0.5 TO 4.5V RATIOMETRIC 5V  
SUPPLY CURRENT 12mA TYP. 20mA MAX.

CABLE: 0.2mm<sup>2</sup>, O/A SCREEN, PUR JACKET – SUPPLIED WITH 50cm OR REQUIRED LENGTH IN cm (15000cm MAX).  
STANDARD 3-CORE: JACKET Ø4mm BLACK e.g. 'L50'  
OPTIONAL 5-CORE: JACKET Ø4.6mm BLUE e.g. 'LQ50'

CABLE/CONNECTOR\* CONNECTIONS;


3 CORE	5 CORE	CONNECTOR	
RED	RED	:1	+Ve
-	ORG	:1	+SENSE (5-WIRE ONLY)
BLACK	BLACK	:3	0V
-	GRY	:3	-SENSE (5-WIRE ONLY)
WHITE	WHITE	:2	OUTPUT
SCREEN	SCREEN	:4	BODY

\*CONNECTORS; MAXIMUM CONDUCTOR CROSS SECTION 0.75mm<sup>2</sup>

RANGE OF DISPLACEMENT FROM 0-5mm TO 0-800mm e.g.76, IN INCREMENTS OF 1mm.

BODY MATERIAL: STAINLESS STEEL.

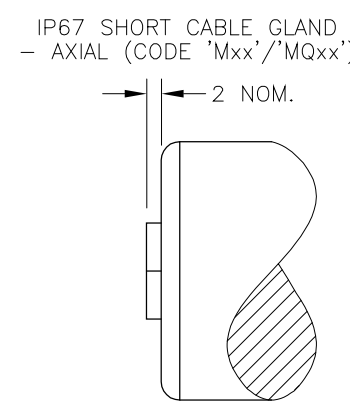
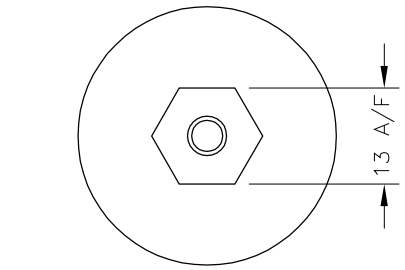
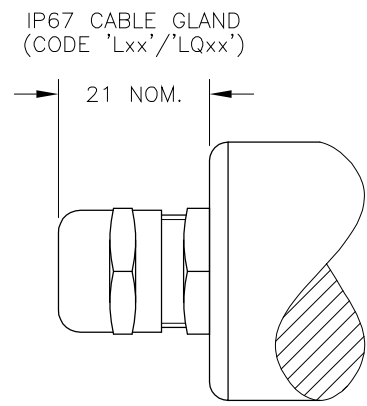
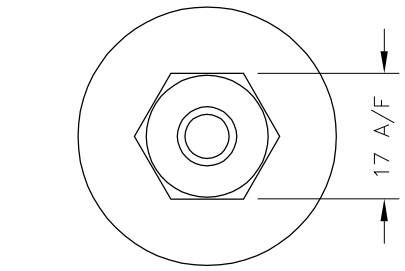
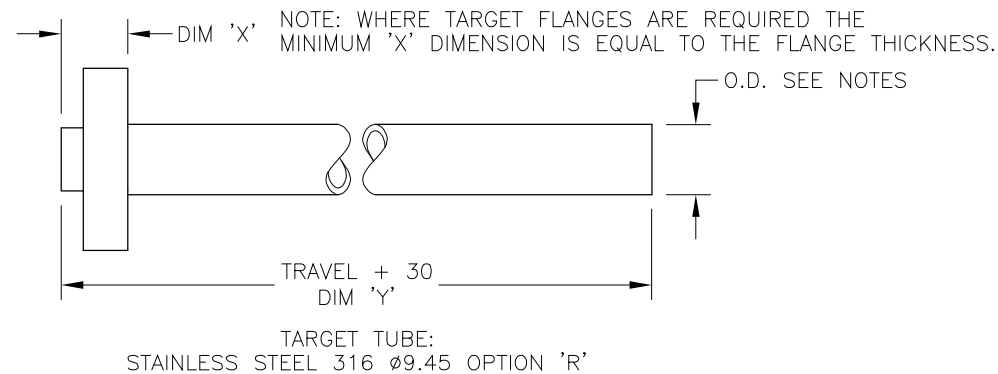
NOTE:- READ INSTALLATION SHEET E100-19 FOR FULL INSTRUCTIONS FOR USE.

**ATEX / IECEx APPROVED TO**  
 **II 1GD**  
**Ex ia IIC T4 Ga (Ta= -40° to +80°C)**  
**Ex ia IIIC T135°C Da (Ta= -40° to +80°C)**  
**Ui 11.4V, li 0.2A, Pi 0.51W**

APPROVED FOR USE IN CONJUNCTION WITH A GALVANICALLY ISOLATED BARRIER.

NOTE: APPROVAL ONLY APPLIES AT NORMAL ATMOSPHERIC PRESSURE!

OPTION 'W' FLANGE ILLUSTRATED; SEE TG24-11 FOR DETAILS TO SPECIFY TARGET TUBES.  
SEE P100-12 FOR DETAILS TYPICAL TARGET TUBE MOUNTING ARRANGEMENTS



F	OPTION 'S' REMOVED - RAN1035.	PDM
G	RANGE WAS 20-600 RAN1056	RDS
H	TARGET NOTES AMENDED ~ RAN1114	PDM
J	5-CORE OPTION ADDED ~ RAN1102	PDM
K	OPTION 'M' ADDED ~ RAN1166, RANGE NOTE AMENDED ~ RAN1200	PDM
L	HEX. LENGTH 14 WAS 15 ~ RAN1160	PDM

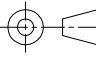
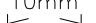


DRAWINGS NOT TO BE CHANGED WITHOUT REFERENCE TO THE CHANGE PROCEDURE. CHANGES TO PARTS USED IN INTRINSICALLY SAFE PRODUCT MUST BE APPROVED BY THE AUTHORISED PERSON  
THIS IS AN UNCONTROLLED PRINT AND WILL NOT BE UPDATED.

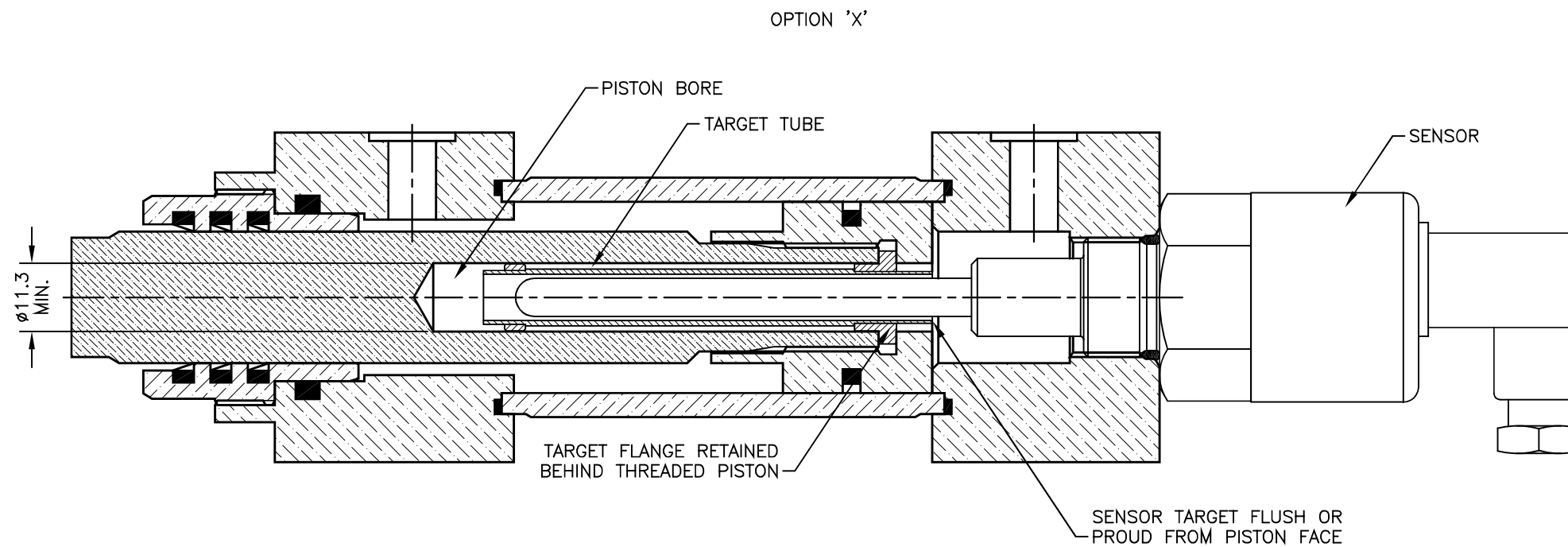
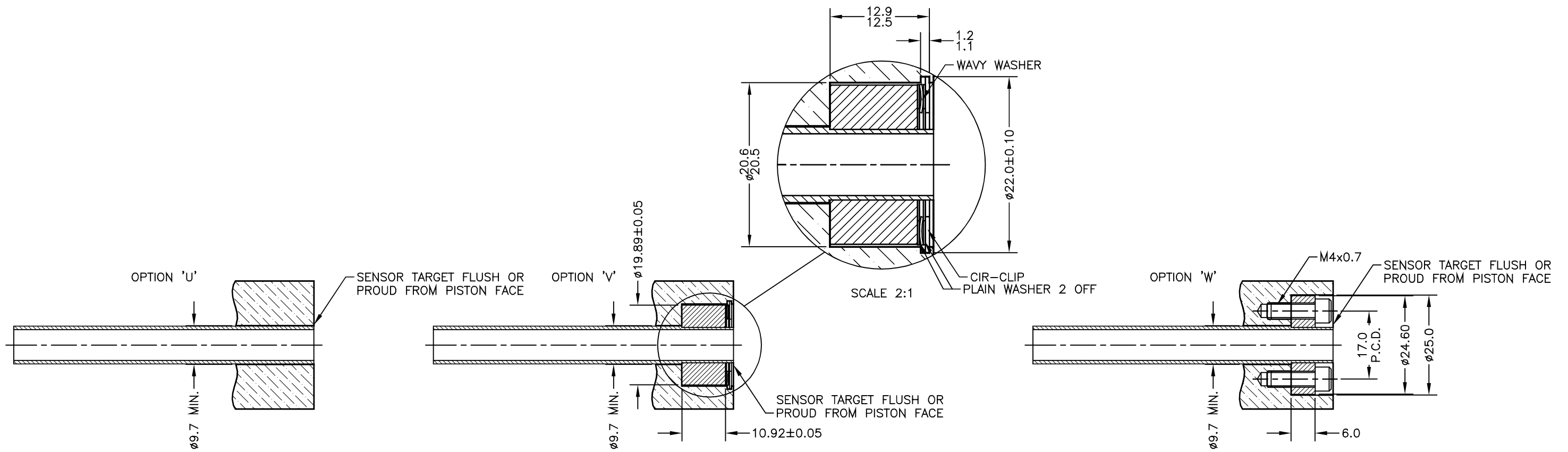
**DSPM Industria**  
sensori & trasduttori

Via Paolo Uccello 4 - 20148 Milano  
Tel +39 02 48 009 757 Fax +39 02 48 002 070 info@dspmindustria.it www.dspmindustria.it



F	29/06/15		CHECKED BY	X	±0.4
G	9/11/15		RDS	X.X	±0.2
H	18/10/16			X.XX	±0.1
J	05/04/17	DESCRIPTION			
K	29/08/17	E100 INTRINSICALLY SAFE			
L	11/10/17	CYLINDER LINEAR POSITION SENSOR			
SCALE 10mm		DRAWING NUMBER		E100-11	REV L
				SHEET 1	OF 1

SEE DRAWING TG24-11 FOR TARGET TUBE FLANGE OPTIONS 'V', 'W' & 'X'.



A	FIRST ISSUE.	RDS
B	REDRAWN.	PDM
C	WORDING AMMENDED	RDS

DRAWINGS NOT TO BE CHANGED WITHOUT REFERENCE TO THE CHANGE PROCEDURE. CHANGES TO PARTS USED IN INTRINSICALLY SAFE PRODUCT MUST BE APPROVED BY THE AUTHORISED PERSON  
THIS IS AN UNCONTROLLED PRINT AND WILL NOT BE UPDATED.

**DSPM Industria**  
sensori & trasduttori

Via Paolo Uccello 4 - 20148 Milano  
Tel +39 02 48 009 757 Fax +39 02 48 002 070 info@dspmindustria.it www.dspmindustria.it

**POSITEK**  
**P**  
**LIMITED**

A	28/06/95		CHECKED BY	X	±0.4
B	04/10/11		MAS	X.X	±0.2
C	26/10/17			X.XX	±0.1
					DIMS mm
DESCRIPTION					
TYPICAL TARGET TUBE FITTING OPTIONS					
SCALE 10mm					
DRAWING NUMBER P100-12 REV C					
SHEET 1 OF 1					

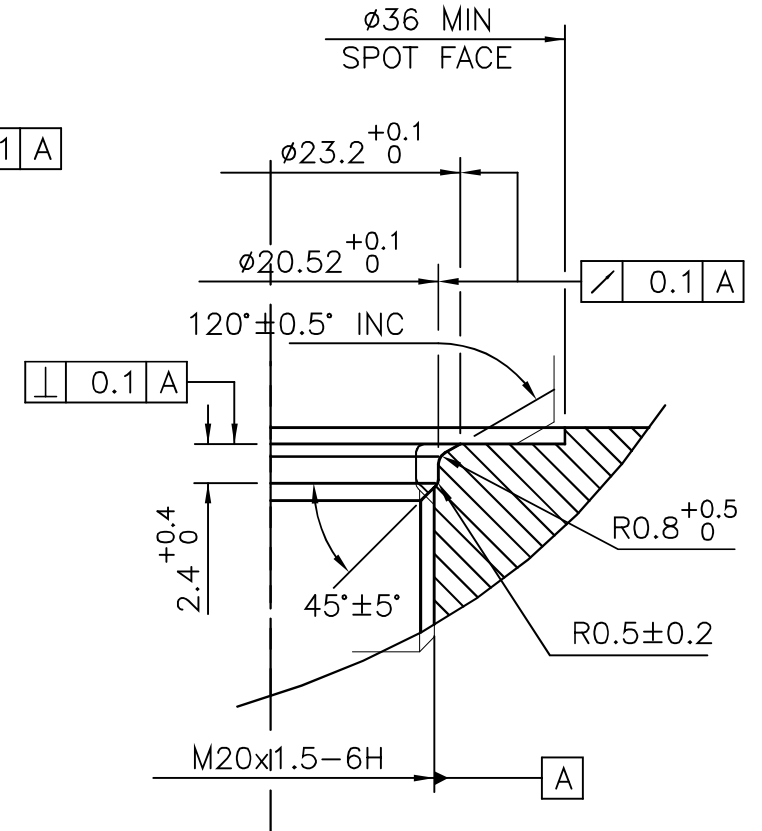
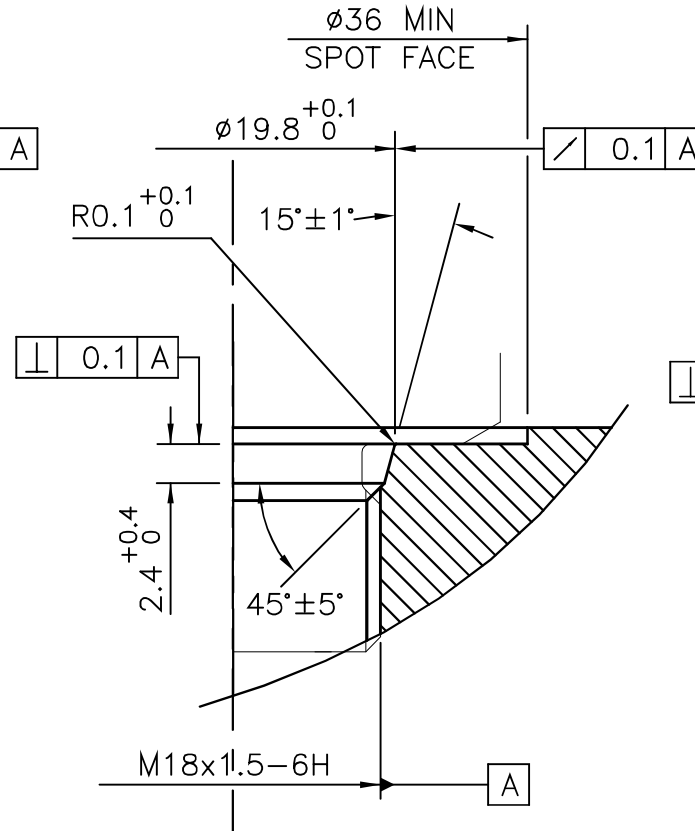
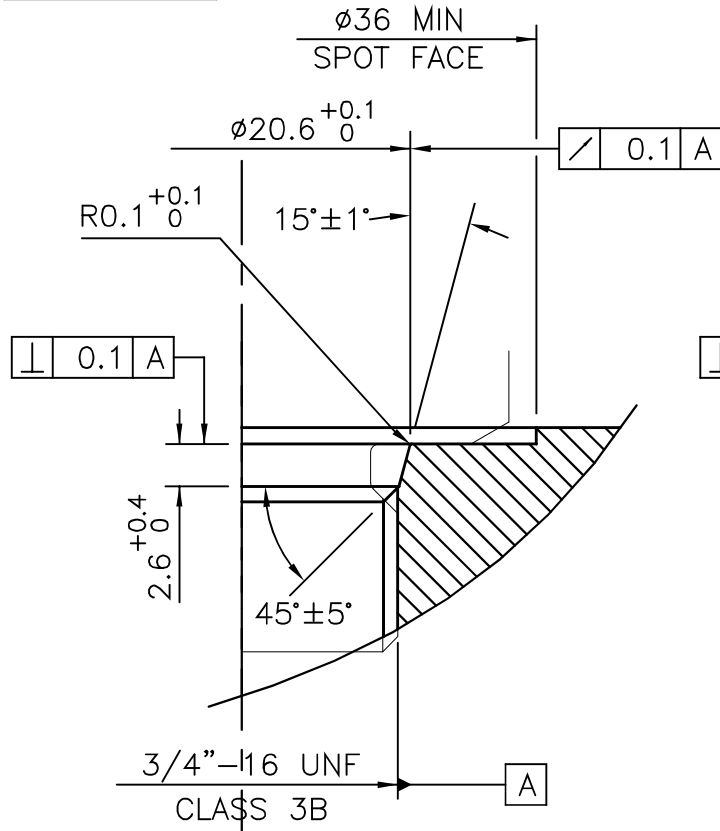
CHECKED  
AT REV.

A

RDS

DRAWING NOT TO BE CHANGED WITHOUT REFERENCE TO THE CHANGE PROCEDURE.  
CHANGES TO PARTS USED IN INTRINSICALLY SAFE PRODUCT MUST BE APPROVED  
BY THE AUTHORISED PERSON

**THIS IS AN UNCONTROLLED PRINT AND WILL NOT BE UPDATED**



A	FIRST ISSUE	COH/DS
---	-------------	--------

**DSPM Industria**  
sensori & trasduttori

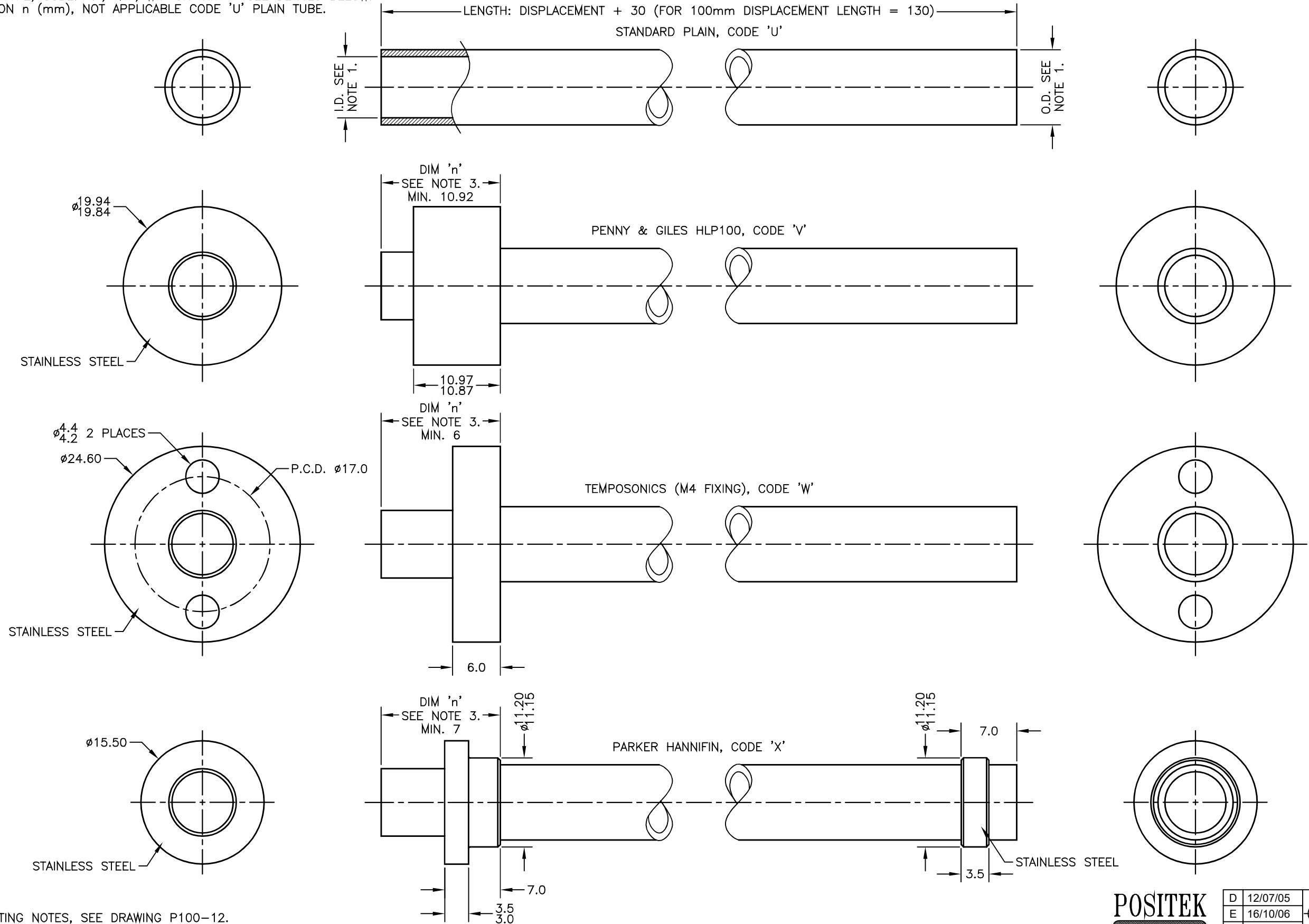
Via Paolo Uccello 4 - 20148 Milano  
Tel +39 02 48 009 757 Fax +39 02 48 002 070 info@dspmindustria.it www.dspmindustria.it



A	29/01/95		MATERIAL	X ±0.4
			SEE NOTE 1	X.X ±0.2
				X.XX ±0.1
				ALL DIMS mm
DESCRIPTION				
INSTALLATION DETAILS				
MOUNTING THREADS				
& SEALS				
SCALE	DRAWING NUMBER P100-15 REV A			
5mm	SHEET 1 OF 1			

TARGET TUBE OPTION NOTES:-

- SPECIFY TUBE MATERIAL; CODE:-  
'R' STAINLESS STEEL 316  $\phi$ 9.45.  
'S' ALUMINIUM 6063  $\phi$ 3/8" (9.2-9.8). NOTE! ONLY AVAILABLE WITH P100 OR P106 VERSIONS.
- SPECIFY FLANGE TYPE; CODE: 'U', 'Vn', 'Wn' OR 'Xn' ~ SEE DETAILS BELOW.
- SPECIFY DIMENSION n (mm), NOT APPLICABLE CODE 'U' PLAIN TUBE.



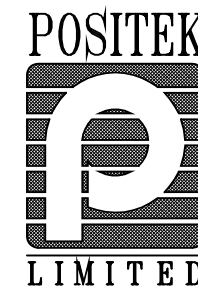
TARGET TUBE MOUNTING NOTES, SEE DRAWING P100-12.

D	MINIMUM 'X' DIMENSIONS ADDED	PDM
E	MATERIAL OPTION REMOVED.	PDM
F	MAT'L OPTION REINSTATED RAN221.	PDM
G	X DIM FOR PH FLANGE SHOWN RAN225	RDS
H	9.45 WAS 9.5 RAN396	RDS
J	REDRAWN, PH FLANGE ROTATED RAN507.	PDM
K	NOTE 1 AMENDED ~ RAN1114.	PDM

DRAWINGS NOT TO BE CHANGED WITHOUT REFERENCE TO THE CHANGE PROCEDURE. CHANGES TO PARTS USED IN INTRINSICALLY SAFE PRODUCT MUST BE APPROVED BY THE AUTHORISED PERSON  
THIS IS AN UNCONTROLLED PRINT AND WILL NOT BE UPDATED.

**DSPM Industria**  
sensori & trasduttori

Via Paolo Uccello 4 - 20148 Milano  
Tel +39 02 48 009 757 Fax +39 02 48 002 070 info@dspmindustria.it www.dspmindustria.it



D	12/07/05	CHECKED BY RDS	X	±0.4
E	16/10/06		X.X	±0.2
F	24/09/08		X.XX	±0.1
				DIMS mm
G	13/11/08	DESCRIPTION		
H	11/12/12	TARGET TUBE AND FLANGE		
J	23/07/14	OPTIONS (LIPS 100/106)		
K	30/11/16			
SCALE 5mm		DRAWING NUMBER TG24-11		REV K
5mm		SHEET 1 OF 1		