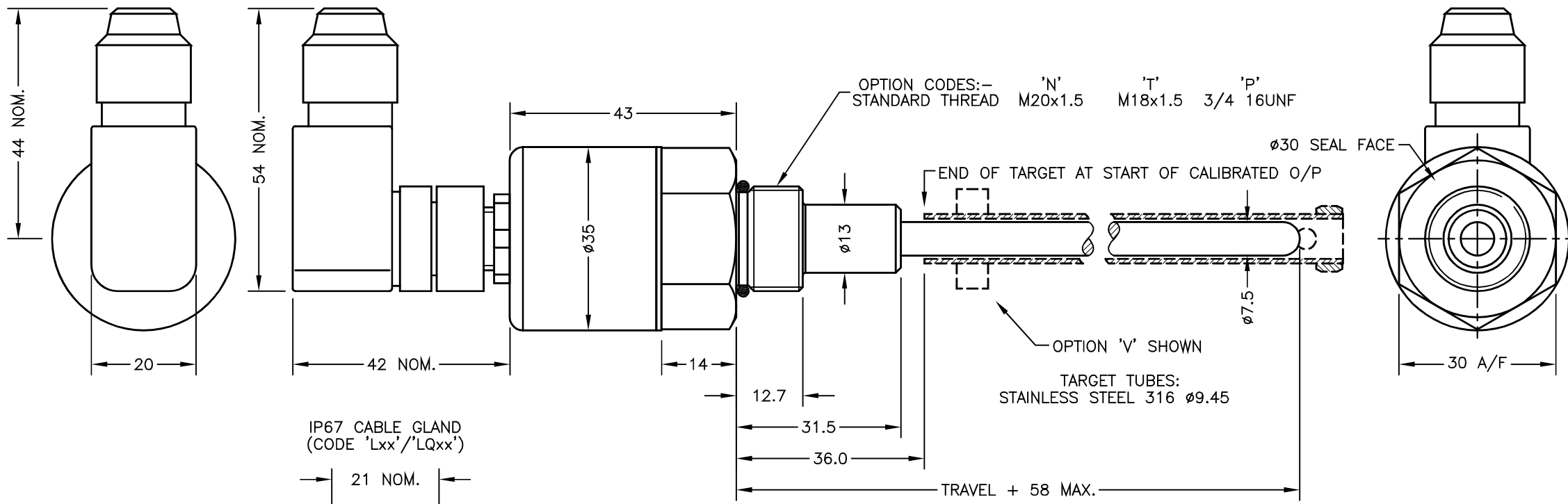


IP67 M12 CONNECTOR IEC 60947-5-2 (CODE 'J')



ELECTRICAL OPTIONS/ SPECIFICATIONS

OUTPUT	SUPPLY
0.5 TO 4.5V RATIOMETRIC	5V
SUPPLY CURRENT 12mA TYP. 20mA MAX.	

CABLE: 0.2mm², O/A SCREEN, PUR JACKET - SUPPLIED WITH 50cm OR REQUIRED LENGTH IN cm (15000cm MAX).
 STANDARD 3-CORE: JACKET $\phi 4$ mm BLACK e.g. 'L50'
 OPTIONAL 5-CORE: JACKET $\phi 4.6$ mm BLUE e.g. 'LQ50'

CABLE/CONNECTOR* CONNECTIONS:

3 CORE	5 CORE	CONNECTOR	
RED	RED	:1	+Ve
-	ORG	:1	+SENSE (5-WIRE ONLY)
BLACK	BLACK	:3	0V
-	GRY	:3	-SENSE (5-WIRE ONLY)
WHITE	WHITE	:2	OUTPUT
SCREEN	SCREEN	:4	BODY

*CONNECTORS; MAXIMUM CONDUCTOR CROSS SECTION 0.75mm²
 RANGE OF DISPLACEMENT FROM 0-400mm TO 0-1485mm IN INCREMENTS OF 1mm.
 BODY MATERIAL: STAINLESS STEEL.

NOTE:- READ INSTALLATION SHEET M130-19 FOR FULL INSTRUCTIONS FOR USE.

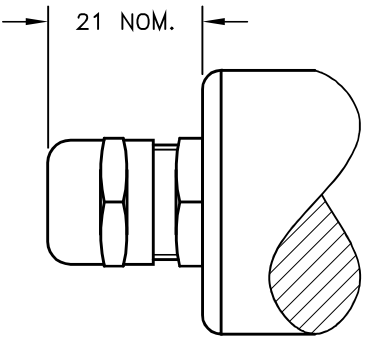
ATEX / IECEx APPROVED TO

III M1/1GD

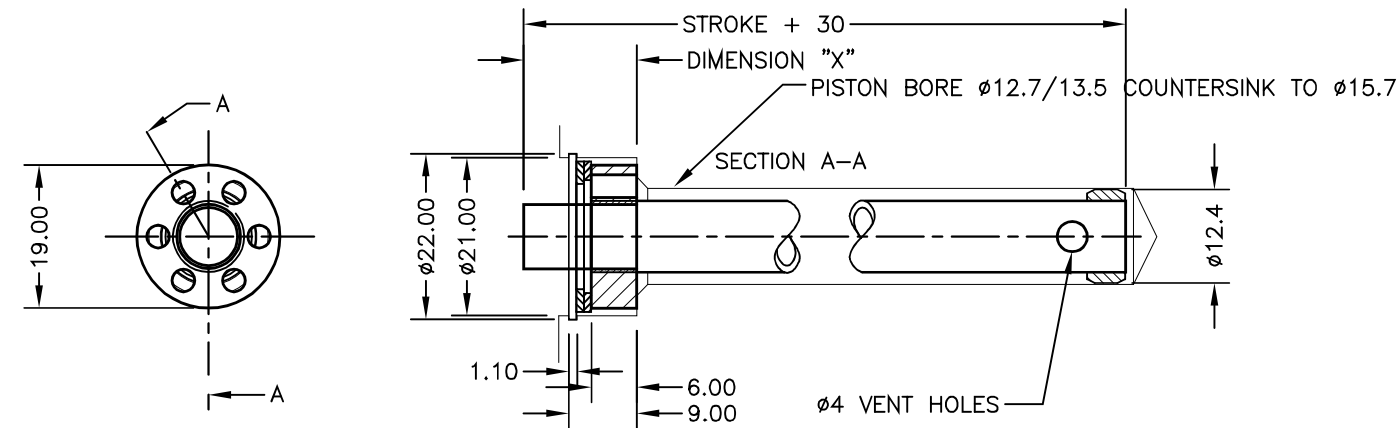
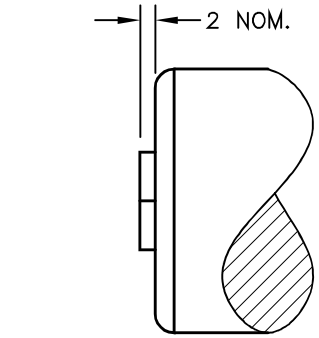
Ex ia IIC T4 Ga (Ta= -40° to +80°C)
 Ex ia IIIC T135°C Da (Ta= -40° to +80°C)
 Ex ia I Ma (Ta= -40° to +80°C)
 Ui 11.4V, li 0.2A, Pi 0.51W

APPROVED FOR USE IN CONJUNCTION WITH A GALVANICALLY ISOLATED BARRIER.
 NOTE: APPROVAL ONLY APPLIES AT NORMAL ATMOSPHERIC PRESSURE!

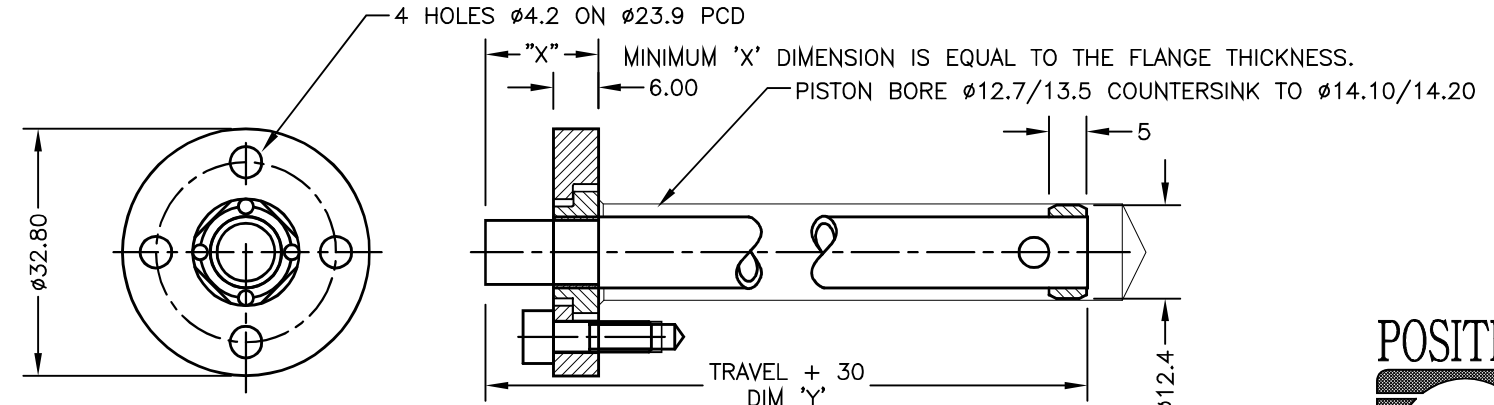
IP67 CABLE GLAND (CODE 'Lxx'/'LQxx')



IP67 SHORT CABLE GLAND - AXIAL (CODE 'Mxx'/'MQxx')



WASHER, WAVY WASHER AND CIRCLIP SUPPLIED
 FLANGE OPTION 'V' CIRCLIP FITTING (ALLOWS ± 1 CONCENTRICITY ERRORS)



FLANGE OPTION 'W' SCREW FITTING (EQUIVALENT TO MTS 201542 MAGNET) (ALLOWS ± 0.8 CONCENTRICITY ERRORS)

A	FIRST ISSUE	RDS



DRAWINGS NOT TO BE CHANGED WITHOUT REFERENCE TO THE CHANGE PROCEDURE. CHANGES TO PARTS USED IN INTRINSICALLY SAFE PRODUCT MUST BE APPROVED BY THE AUTHORISED PERSON
 THIS IS AN UNCONTROLLED PRINT AND WILL NOT BE UPDATED.



A	29/9/18	CHECKED BY	X ± 0.4 X.X ± 0.2 X.XX ± 0.1 DIMs mm
DESCRIPTION			
M100 INTRINSICALLY SAFE LONG STROKE IN-CYLINDER LINEAR POSITION SENSOR			
SCALE	10mm	DRAWING NUMBER	M130-11 REV A
SHEET 1 OF 1			

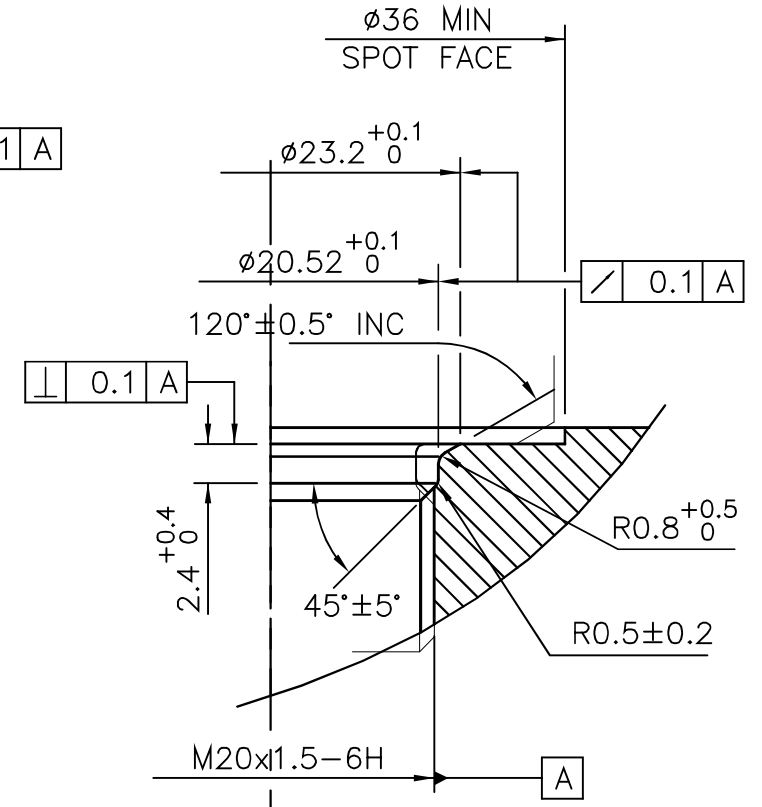
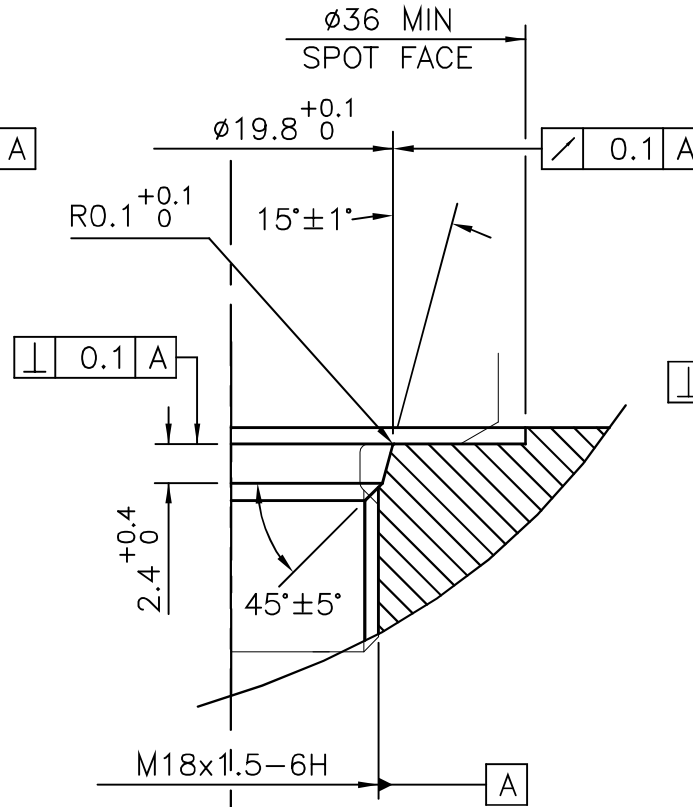
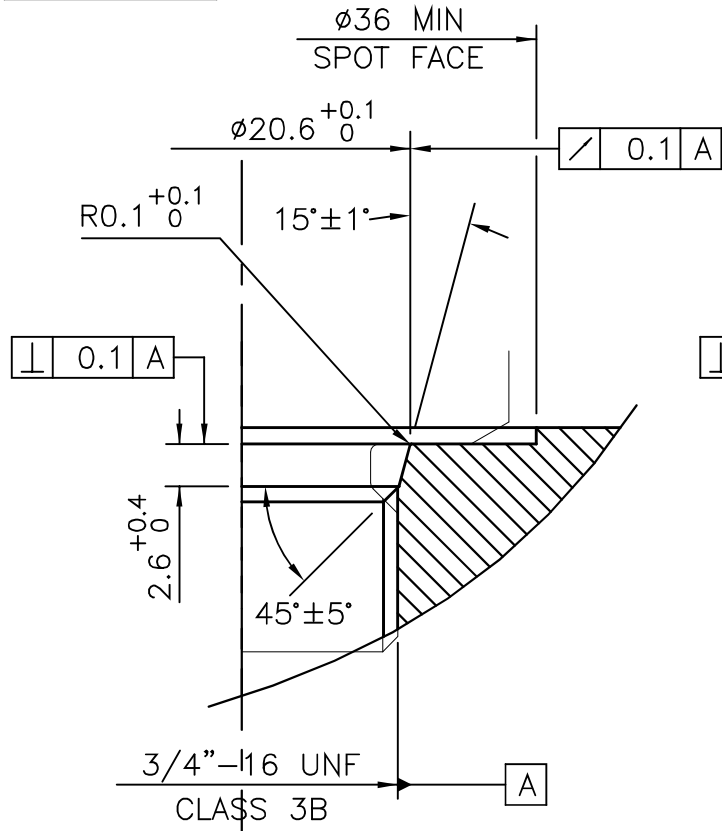
CHECKED
AT REV.

A

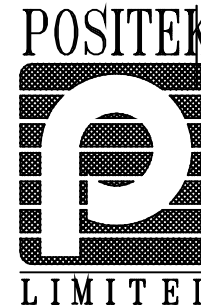
RDS

DRAWING NOT TO BE CHANGED WITHOUT REFERENCE TO THE CHANGE PROCEDURE.
CHANGES TO PARTS USED IN INTRINSICALLY SAFE PRODUCT MUST BE APPROVED
BY THE AUTHORISED PERSON

THIS IS AN UNCONTROLLED PRINT AND WILL NOT BE UPDATED



A	FIRST ISSUE	COH/DS
---	-------------	--------



A	29/01/95	MATERIAL SEE NOTE 1	X ±0.4 X.X ±0.2 X.XX ±0.1 ALL DIMS mm
DESCRIPTION		INSTALLATION DETAILS MOUNTING THREADS & SEALS	
SCALE	DRAWING NUMBER	P100-15 REV	A
5mm	SHEET		1 OF 1