

**ELECTRICAL OPTIONS/ SPECIFICATIONS**

OUTPUT	SUPPLY
0.5 TO 4.5V RATIOMETRIC	5V
SUPPLY CURRENT 12mA TYP. 20mA MAX.	

CABLE: 0.2mm<sup>2</sup>, O/A SCREEN, PUR JACKET – SUPPLIED WITH 50cm OR REQUIRED LENGTH IN cm (15000cm MAX).  
 STANDARD 3-CORE: JACKET Ø4mm BLACK e.g. 'L50'  
 OPTIONAL 5-CORE: JACKET Ø4.6mm BLUE e.g. 'LQ50'


**CABLE/CONNECTOR\* CONNECTIONS:**

3 CORE	5 CORE	CONNECTOR	
RED	RED	:1	+Ve
-	ORG	:1	+SENSE (5-WIRE ONLY)
BLACK	BLACK	:3	0V
-	GRY	:3	-SENSE (5-WIRE ONLY)
WHITE	WHITE	:2	OUTPUT
SCREEN	SCREEN	:4	BODY

\*CONNECTORS; MAXIMUM CONDUCTOR CROSS SECTION 0.75mm<sup>2</sup>  
 RANGE OF DISPLACEMENT FROM 0–400mm TO 0–1485mm  
 IN INCREMENTS OF 1mm.

BODY MATERIAL: STAINLESS STEEL.

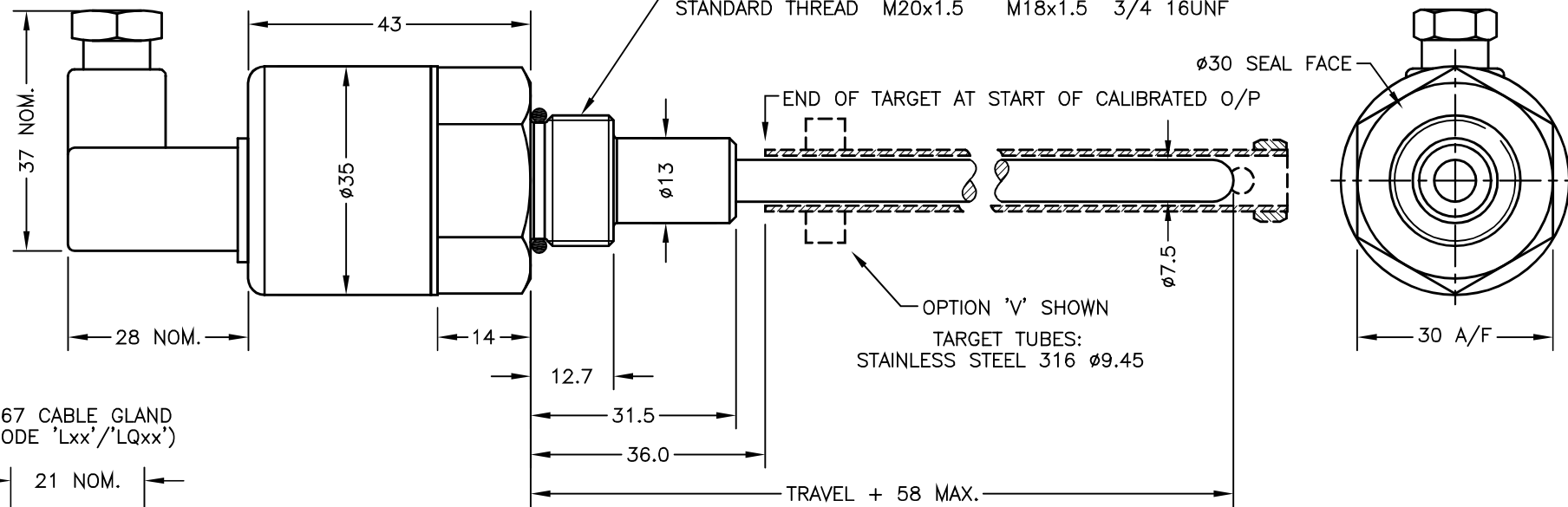
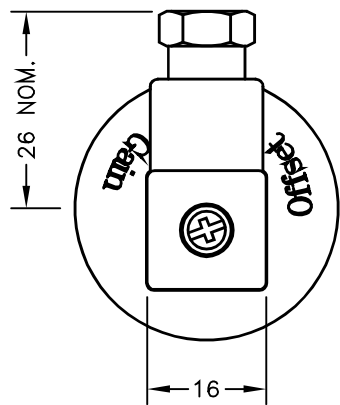
NOTE:– READ INSTALLATION SHEET X130–19 FOR FULL INSTRUCTIONS FOR USE.

ATEX / IECEx APPROVED TO  
 II 1G  
 Ex ia IIC T4 Ga (Ta= -40° to +80°C)  
 Ui 11.4V, Ii 0.2A, Pi 0.51W

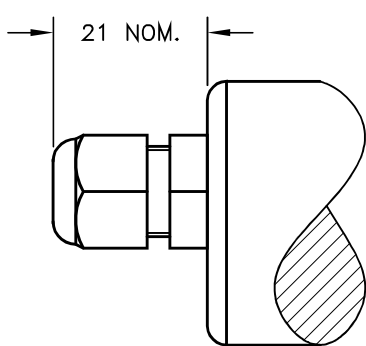
APPROVED FOR USE IN CONJUNCTION WITH A GALVANICALLY ISOLATED BARRIER.

NOTE: APPROVAL ONLY APPLIES AT NORMAL ATMOSPHERIC PRESSURE!

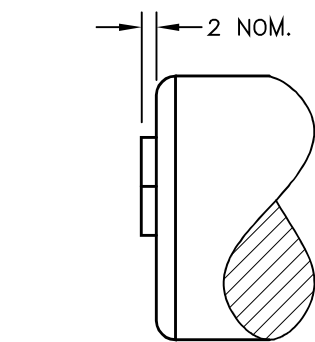
IP65 CONNECTOR DIN 43650 C (CODE J)



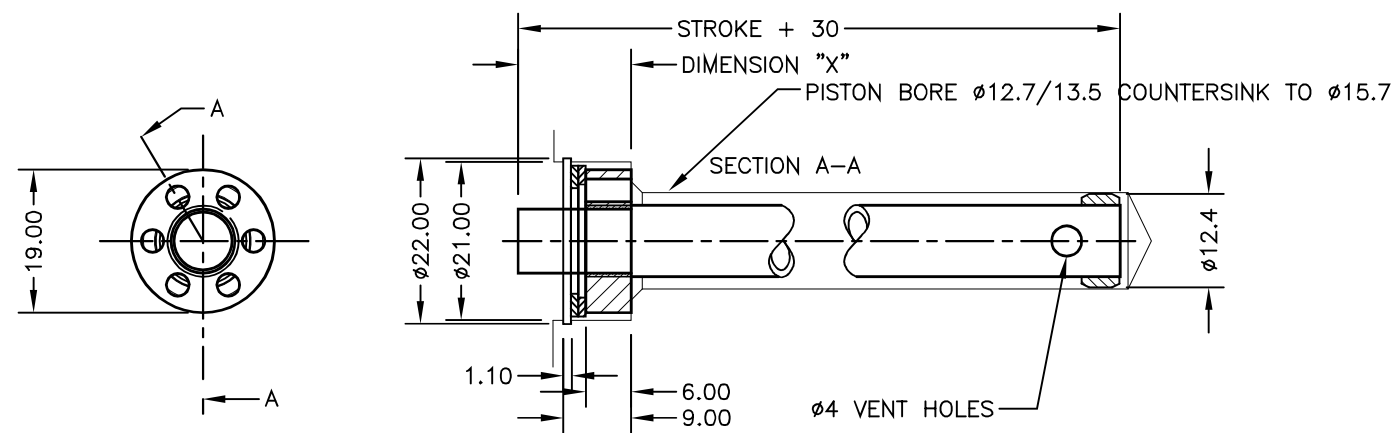
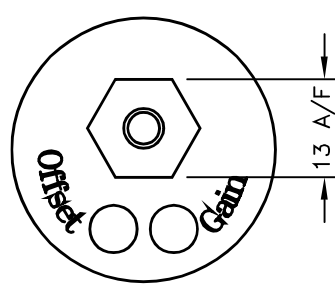
IP67 CABLE GLAND (CODE 'Lxx'/'LQxx')



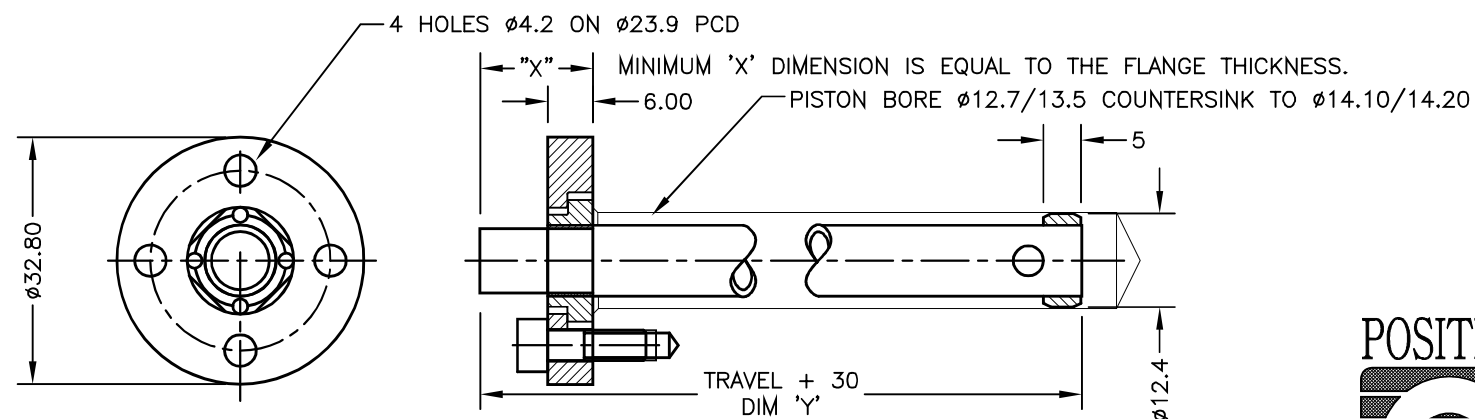
IP67 SHORT CABLE GLAND – AXIAL (CODE 'Mxx'/'MQxx')



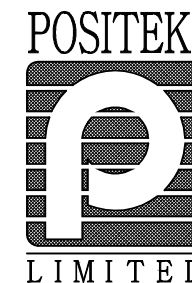
GAIN AND OFFSET ADJUSTMENTS SEALED (CODE 'Y')



WASHER, WAVY WASHER AND CIRCLIP SUPPLIED  
 FLANGE OPTION 'V' CIRCLIP FITTING  
 (ALLOWS ±1 CONCENTRICITY ERRORS)



FLANGE OPTION 'W' SCREW FITTING (EQUIVALENT TO MTS 201542 MAGNET)  
 (ALLOWS ±0.8 CONCENTRICITY ERRORS)



A	29/09/18	CHECKED BY	X ±0.4 X.X ±0.2 X.XX ±0.1 DIMS mm
DESCRIPTION X130 INTRINSICALLY SAFE LONG STROKE IN-CYLINDER LINEAR POSITION SENSOR			
SCALE 10mm	DRAWING NUMBER X130-11		REV A
			SHEET 1 OF 1

A	FIRST ISSUE	RDS



DRAWINGS NOT TO BE CHANGED WITHOUT REFERENCE TO THE CHANGE PROCEDURE.  
 CHANGES TO PARTS USED IN INTRINSICALLY SAFE PRODUCT MUST BE APPROVED  
 BY THE AUTHORISED PERSON  
 THIS IS AN UNCONTROLLED PRINT AND WILL NOT BE UPDATED.

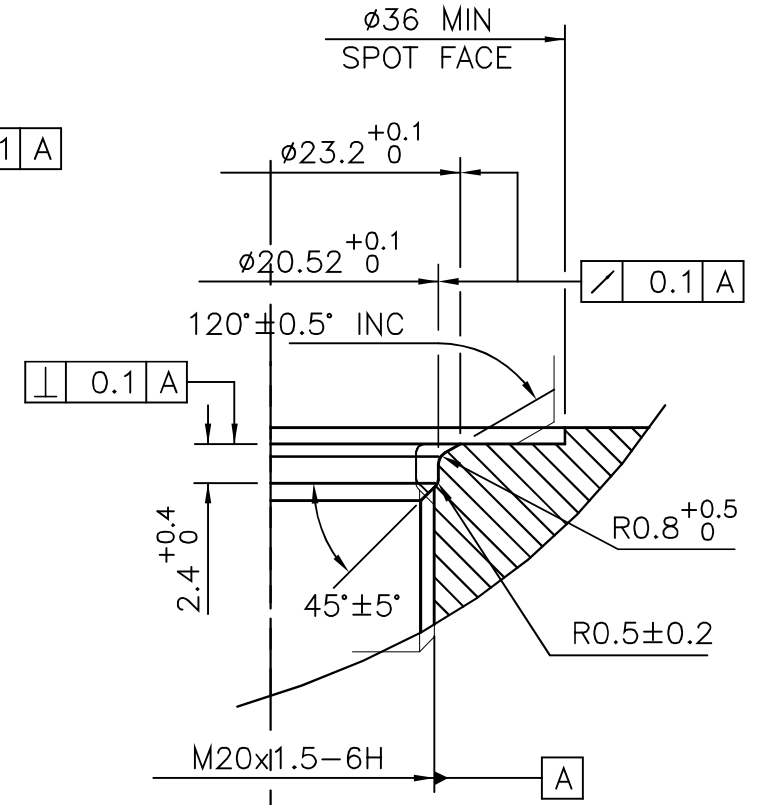
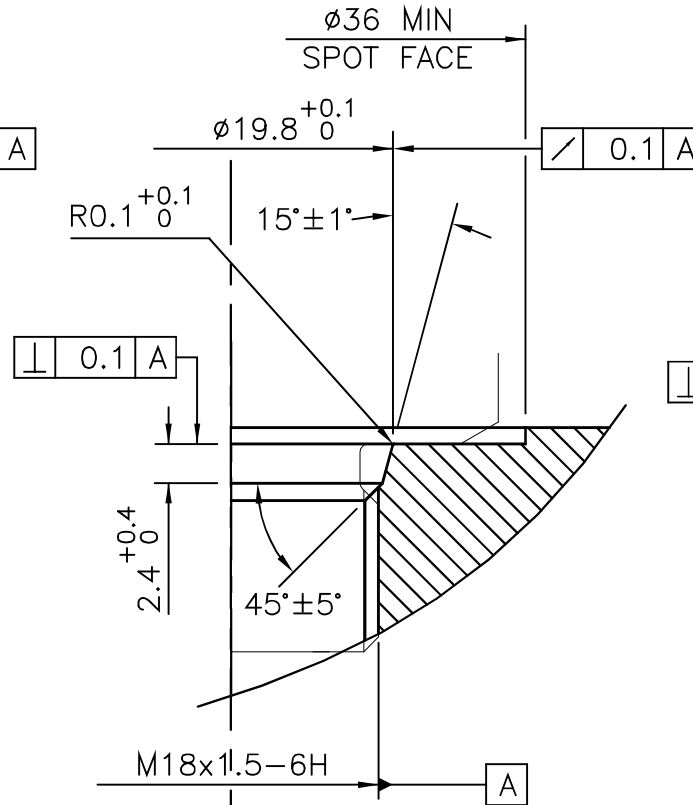
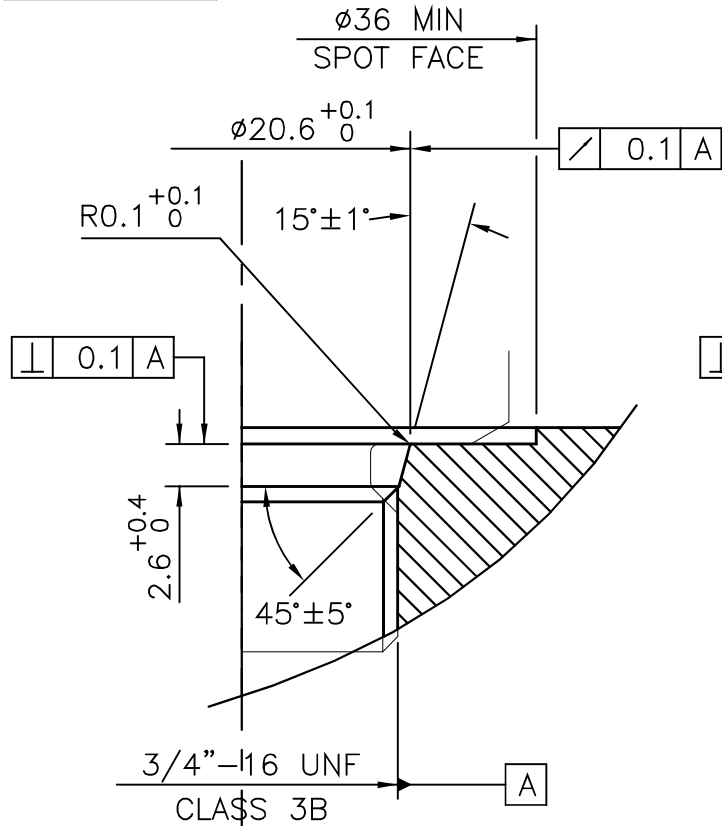
CHECKED  
AT REV.

A

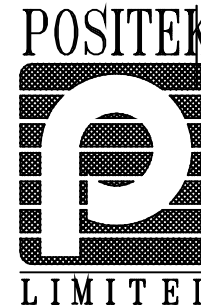
RDS

DRAWING NOT TO BE CHANGED WITHOUT REFERENCE TO THE CHANGE PROCEDURE.  
CHANGES TO PARTS USED IN INTRINSICALLY SAFE PRODUCT MUST BE APPROVED  
BY THE AUTHORISED PERSON

**THIS IS AN UNCONTROLLED PRINT AND WILL NOT BE UPDATED**



A	FIRST ISSUE	COH/DS
---	-------------	--------



A	29/01/95		MATERIAL	X ±0.4
			SEE NOTE 1	X.X ±0.2
DESCRIPTION		ALL DIMS mm		
INSTALLATION DETAILS				
MOUNTING THREADS				
& SEALS				
SCALE	DRAWING NUMBER	P100-15 REV		A
5mm				
SHEET		1 OF 1		