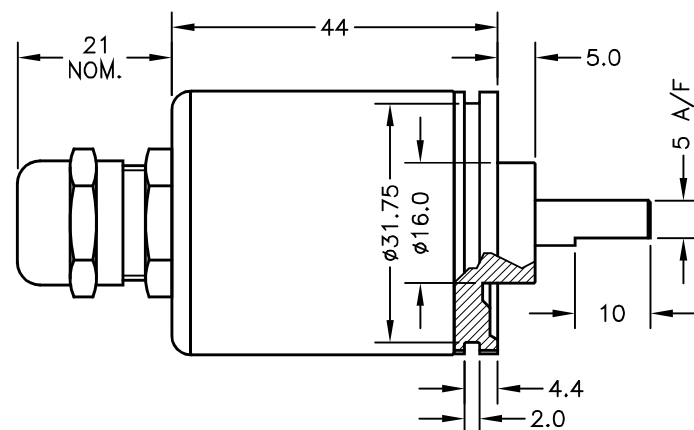


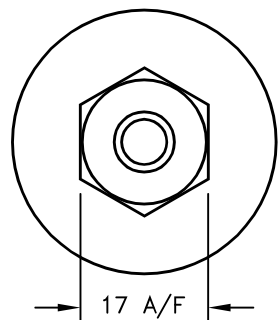
IP67 M12 CONNECTOR  
IEC 60947-5-2  
(CODE 'J')

FLANGE BASE  
(STANDARD)

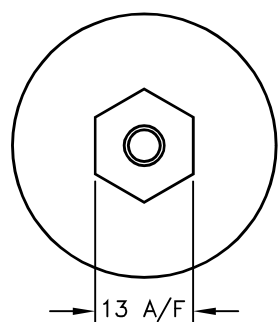
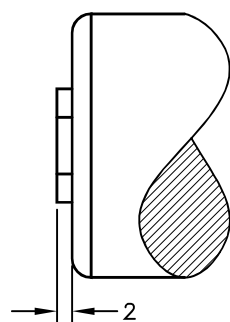
IP67 CABLE GLAND  
(CODE 'Lxx'/'LQxx')



SERVO MOUNT  
(CODE 'P')



IP67 SHORT CABLE GLAND  
- AXIAL (CODE 'Mxx'/'MQxx')



ELECTRICAL OPTIONS/ SPECIFICATIONS

OUTPUT SUPPLY

0.5 TO 4.5V RATIOMETRIC 5V  
SUPPLY CURRENT 12mA TYP. 20mA MAX.

CABLE: 0.2mm<sup>2</sup>, O/A SCREEN, PUR JACKET - SUPPLIED WITH 50cm OR REQUIRED LENGTH IN cm (15000cm MAX).  
STANDARD 3-CORE: JACKET Ø4mm BLACK e.g. 'L50'  
OPTIONAL 5-CORE: JACKET Ø4.6mm BLUE e.g. 'LQ50'

CABLE/CONNECTOR\* CONNECTIONS;

| 3 CORE | 5 CORE | CONNECTOR |                      |
|--------|--------|-----------|----------------------|
| RED    | RED    | :1        | +Ve                  |
| -      | ORG    | :1        | +SENSE (5-WIRE ONLY) |
| BLACK  | BLACK  | :3        | 0V                   |
| -      | GRY    | :3        | -SENSE (5-WIRE ONLY) |
| WHITE  | WHITE  | :2        | OUTPUT               |
| SCREEN | SCREEN | :4        | BODY                 |

\*CONNECTORS; MAXIMUM CONDUCTOR CROSS SECTION 0.75mm<sup>2</sup>  
RANGE OF DISPLACEMENT FROM 0-5° TO 0-15° e.g.12°, IN INCREMENTS OF 1°.

BODY MATERIAL:- STAINLESS STEEL.  
FLANGE BASE MATERIAL:- STAINLESS STEEL.  
SERVO MOUNT MATERIAL:- STAINLESS STEEL.

FURTHER OPTIONS:

SPRING RETURN (CODE 'N') AVAILABLE UP TO ±50°  
CALIBRATED OUTPUT, PHYSICAL STOPS ±55°  
NOTE STANDARD DEVICE HAS NO STOPS.

NOTE:- READ INSTALLATION SHEET M502-19 FOR FULL INSTRUCTIONS FOR USE.

ATEX / IECEx APPROVED TO  
I/II M1/1GD  
Ex ia IIC T4 Ga (Ta= -40° to +80°C)  
Ex ia IIIC T135°C Da (Ta= -40° to +80°C)  
Ex ia I Ma (Ta= -40° to +80°C)  
Ui 11.4V, li 0.2A, Pi 0.51W

APPROVED FOR USE IN CONJUNCTION WITH A GALVANICALLY ISOLATED BARRIER.

NOTE: APPROVAL ONLY APPLIES AT NORMAL ATMOSPHERIC PRESSURE!

|   |  |     |
|---|--|-----|
| C | li 0.2A WAS 0.46A - RAN266                               | PDM |
| D | ADDITIONAL DIMS/VIEWS ADDED.                             | PDM |
| E | DISP. 5 TO 15° WAS 5 TO 20° RAN442                       | PDM |
| F | APPROVAL STANDARDS UPDATED - RAN465.                     | PDM |
| G | 5-CORE OPTION ADDED ~ RAN1102                            | PDM |
| H | OPTION 'M' ADDED ~ RAN1166, RANGE NOTE AMENDED ~ RAN1200 | PDM |



DRAWINGS NOT TO BE CHANGED WITHOUT REFERENCE TO THE CHANGE PROCEDURE. CHANGES TO PARTS USED IN INTRINSICALLY SAFE PRODUCT MUST BE APPROVED BY THE AUTHORISED PERSON  
THIS IS AN UNCONTROLLED PRINT AND WILL NOT BE UPDATED.

|               |          |  |          |      |
|---------------|----------|--|----------|------|
| C             | 21/04/10 | CHECKED BY<br>RDS  | X        | ±0.4 |
| D             | 06/07/11 |  | X.X      | ±0.2 |
| E             | 07/11/13 |  | X.XX     | ±0.1 |
| F             | 11/03/14 | DESCRIPTION<br>M502 INTRINSICALLY SAFE<br>SMALL ANGLE ROTARY<br>SENSOR |          |      |
| G             | 26/04/17 |  |          |      |
| H             | 11/09/17 |  |          |      |
| SCALE<br>10mm |          | DRAWING NUMBER<br>M502-11  | REV<br>H |      |
| 10mm          |          | SHEET 1 OF 1   |          |      |