

| OUTPUT OPTION | OUTPUT                   | SUPPLY |
|---------------|--------------------------|--------|
| A             | 0.5 TO 4.5V RATIO METRIC | 5V     |
| C             | 0.5 TO 9.5V              | 24V    |
| G             | 0.5 TO 4.5V              | 24V    |
| H             | 4 TO 20mA                | 24V    |

STANDARD }  
BUFFERED }

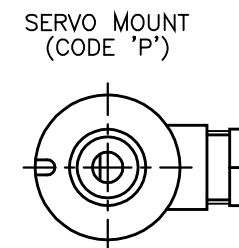
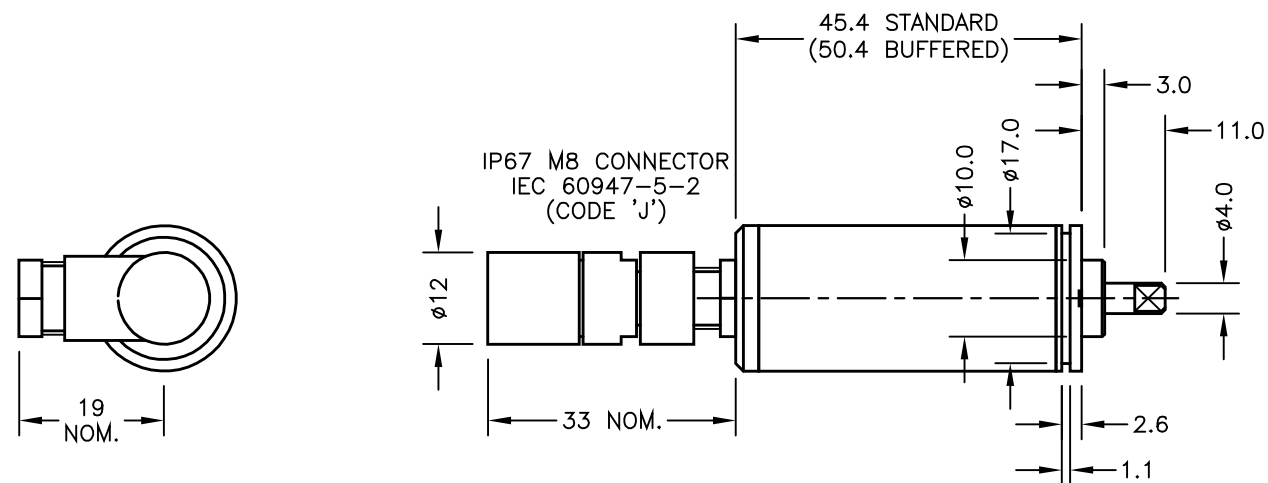
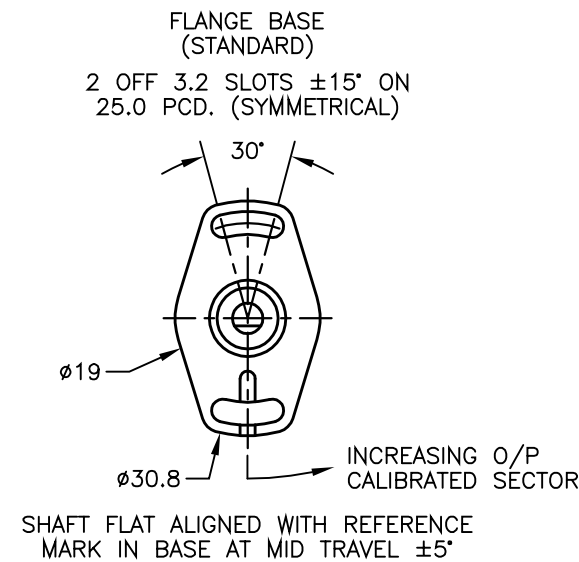
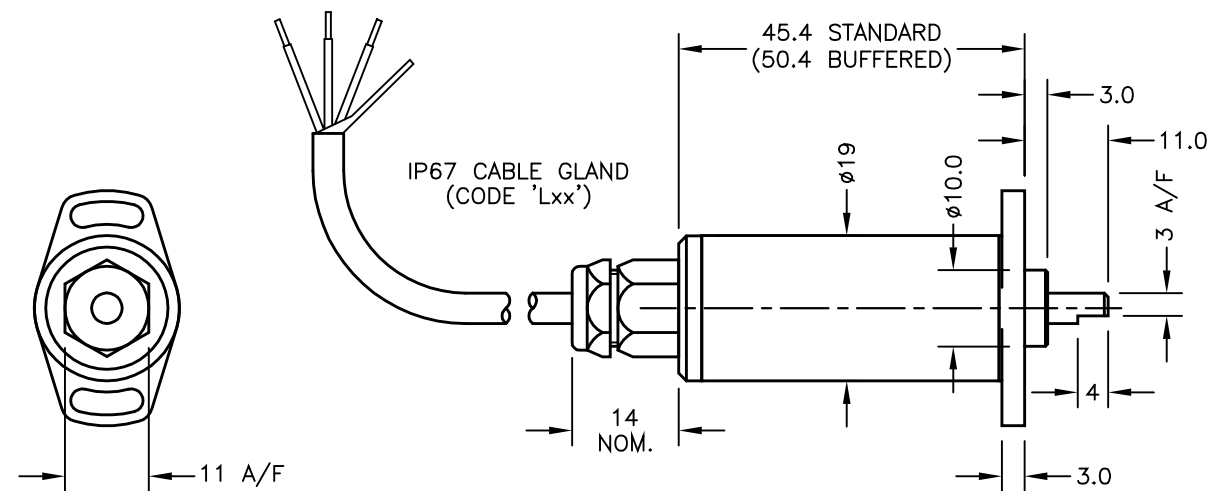
SUPPLY CURRENT 12mA TYP. 20mA MAX. PLUS O/P CURRENT  
 CABLE: 0.2mm<sup>2</sup>, O/A SCREEN, PUR JACKET - SUPPLIED  
 WITH 50cm OR REQUIRED LENGTH IN cm. e.g. 'L50'  
 3-CORE: JACKET  $\phi$ 4mm

CABLE/CONNECTOR\* CONNECTIONS;  
 3 CORE CONNECTOR

|        |    |        |
|--------|----|--------|
| RED    | :1 | +Ve    |
| BLACK  | :3 | 0V     |
| WHITE  | :2 | OUTPUT |
| SCREEN | :4 | BODY   |

\*CONNECTORS; MAXIMUM CONDUCTOR CROSS SECTION 0.25mm<sup>2</sup>  
 RANGE OF DISPLACEMENT FROM 0-15° TO 0-160° e.g. 76°,  
 IN INCREMENTS OF 1°.

BODY MATERIAL: STAINLESS STEEL.  
 FLANGE BASE MATERIAL:- ALUMINIUM.  
 SERVO MOUNT MATERIAL:- ALUMINIUM.



|   |                                    |     |
|---|------------------------------------|-----|
| D | SHAFT LENGTH REDUCED 0.5 - RAN538. | PDM |
| E | SERVO MOUNT SHOWN AT MID POSITION  | RDS |
| F | OPTION 'J' ADDED - RAN1068.        | PDM |
| G | RANGE NOTE AMENDED ~ RAN1200       | PDM |
| H | 4 TO 20mA ADDED RAN1256            | RDS |



DRAWINGS NOT TO BE CHANGED WITHOUT REFERENCE TO THE CHANGE PROCEDURE.  
 CHANGES TO PARTS USED IN INTRINSICALLY SAFE PRODUCT MUST BE APPROVED  
 BY THE AUTHORISED PERSON  
 THIS IS AN UNCONTROLLED PRINT AND WILL NOT BE UPDATED.

|       |          |                                   |            |        |         |
|-------|----------|-----------------------------------|------------|--------|---------|
| D     | 21/01/15 |                                   | CHECKED BY | X      | ±0.4    |
| E     | 7/4/15   |                                   | -          | X.X    | ±0.2    |
| F     | 02/12/15 |                                   |            | X.XX   | ±0.1    |
|       |          |                                   |            |        | DIMS mm |
| G     | 12/09/17 | DESCRIPTION                       |            |        |         |
| H     | 12/09/18 | P505 RIPS MINIATURE ROTARY SENSOR |            |        |         |
| SCALE |          | DRAWING NUMBER                    |            | REV    |         |
| 5mm   |          | P505-11                           |            | H      |         |
|       |          | SHEET                             |            | 1 OF 1 |         |