

HX-PB SERIES

BRIDGE CIRCUIT VOLTAGE OUTPUT



The UniMeasure HX-PB Series transducer includes the sensing potentiometer in a bridge circuit with adjustable zero and span controls. The completely passive circuit gives a maximum output voltage at maximum span setting of approximately 18% of the input voltage. The span adjustment allows for easy interface to a bridge amplifier. With zero position adjustable to anywhere within the total range of the transducer, voltage output is positive when extending the wire rope from the selected zero position and is negative when retracting from zero.



SPECIFICATIONS

GENERAL

Measurement Ranges.....	See Supplemental Data ^[1] , Table 12
Sensing Device	Precision Potentiometer
Connector	MS3102E-14S-6P
Mating Connector (included)	MS3106E-14S-6S

PERFORMANCE

Linearity	
2", 3", 4", 5" & 6" Ranges	±0.25% Full Scale
10", 15", 20" & 25" Ranges	±0.15% Full Scale
All other ranges	±0.10% Full Scale
Repeatability	±0.015% Full Scale
Resolution	Essentially Infinite

ENVIRONMENTAL

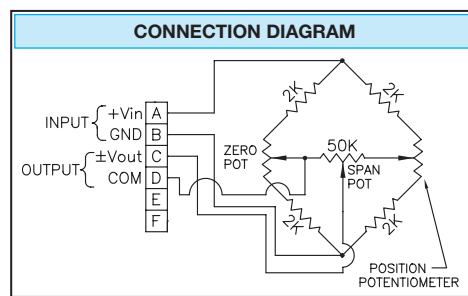
Thermal Coefficient of Sensing Element	±100 PPM/°C Max.
Operating Temperature	-40°C to +95°C
Operating Humidity	100%
Vibration	15 G's 0.1 ms max.
Shock	50 G's 0.1 ms max.

INGRESS PROTECTION (Exclusive of Wire Rope Area)

Standard	IP-65 (NEMA 4)
Optional	IP-68 (NEMA 6)

ELECTRICAL

Input Impedance	1.25KΩ
Output Impedance	1.25KΩ at max span setting 14.4KΩ @ 51% max. span setting
Excitation Voltage	30 Volts Max. AC or DC
Output Voltage	User adjustable to a maximum of 18% of Input Voltage



FOOTNOTES TO SPECIFICATIONS

1. Supplemental Data section located at end of HX Series pages.

MODEL NUMBER CONFIGURATION

HX-PB- 0 1 2 3 4 5 6 7 8 9

BASIC CONFIGURATION (FOR ALL RANGES)

HX-PB-50-S10-N0S-1BC

0 RANGE
Select Measurement Range From Supplemental Data Table 12^p 12 (next page), Insert Corresponding Measurement Range Designator

1 WIRE ROPE
S Stainless Steel
(See Supplemental Data, Table 12)
N Ø.018 (0.45 mm)
Nylon Jacketed Stainless Steel
Ranges to 80" (2m) only. (formerly NJC)
J Ø.037 (0.94 mm)
Nylon Jacketed Stainless Steel
Ranges 100" (2.5m) to 500" (12.7m) only.

2 WIRE ROPE TENSION
1 Standard
2 Reduced (Ranges to 80" only)

3 WIRE ROPE EXIT DIRECTION
Use Number designators shown
RANGES TO 80" (2000 mm)

RANGES 100" TO 2000" (2.5 m TO 50 M)

4 N Required Designator
5 0 Required Designator
6 ELECTRICAL OUTPUT POLARITY
S Standard (increasing output as wire rope is extended)
R Reversed (decreasing output as wire rope is extended)

NOTES FOR OPTION BOXES 7, 8, and 9

IP-65 (NEMA 4): Transducer equipped with body mounted connector and with or without mating connector. Mating connector with electrical cable available separately as part number 10119-xM where 'x' is length of electrical cable in meters.

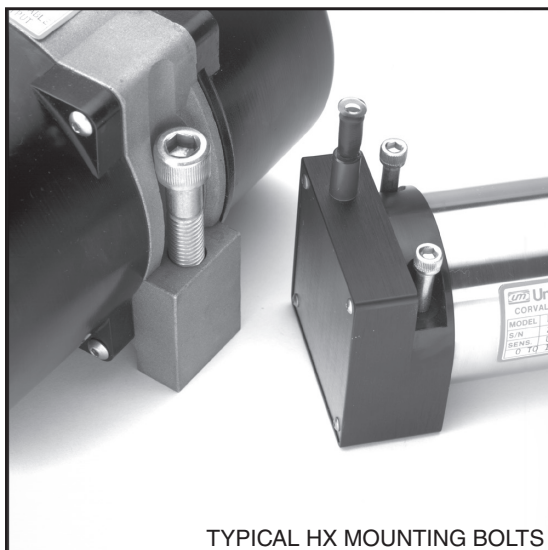
IP-68 (NEMA 6): Transducer equipped with bulkhead fitting and length of electrical cable. Remote end of electrical cable may be outfitted with water proof connector. Mating connector with electrical cable available separately as part number 10424-xM where 'x' is length of electrical cable in meters.

7 INGRESS PROTECTION
1 IP-65 (NEMA 4)
2 IP-68 (NEMA 6)
3 IP-68 (NEMA 6) Corrosion Resistant Construction

8 IP-65-NEMA 4 CONNECTOR
B 6 Pin 3102E Body Mounted Connector
IP-68-NEMA 6 ELECTRICAL CABLE
P Bulkhead Fitting w/ 0.3m (12") Electrical Cable
3 Bulkhead Fitting w/ 3m (10') Electrical Cable
4 Bulkhead Fitting w/ 4m (13.5') Electrical Cable
5 Bulkhead Fitting w/ 5m (16.5') Electrical Cable
6 Bulkhead Fitting w/ 6m (20') Electrical Cable
7 Bulkhead Fitting w/ 7m (23') Electrical Cable

9 IP-65-NEMA 4 MATING CONNECTOR
C IP-65 Mating Connector Included
K IP-65 Mating Connector Omitted*
*Electrical cable with mating connector may be ordered separately as part number 10119-xM where 'x' is the length required in meters.
IP-68-NEMA 6 CABLE MOUNTED CONNECTOR
N No connector on end of electrical cable
K IP-68 Cable to cable connector with
NO mating connector**
**Electrical cable with mating connector may be ordered separately as part number 10424-xM where 'x' is the length required in meters. Mating connector alone unavailable.

MECHANICAL SPECIFICATIONS



TYPICAL HX MOUNTING BOLTS

AVAILABLE MEASUREMENT RANGES See Table 12

CONSTRUCTION

Ranges 80" (2 m) and under	Anodized Aluminum Mounting Base
	Stainless Steel & Anodized Aluminum Housing
Ranges 100" (2.5 m) and greater	Stainless Steel Mounting Base
	High Impact, Corrosion Resistant
	Thermoplastic Housings
Wire Rope Tension.....	See Table 12
Wire Rope Diameter	See Table 12
Weight	See Table 12
Connector	MS3102A-14S-6P
Mating Connector	MS3106E-14S-6S
Optional NEMA 6 Capability.....	Bulkhead fitting with shielded twisted pair cable

Life⁽¹⁾

Ranges 2" to 6"	5,000,000 full stroke cycles
Ranges 10" to 25"	500,000 full stroke cycles
Ranges 30" to 400"	250,000 full stroke cycles
Ranges 500" to 2000"	200x10 ⁶ lineal inches

NOTES:

1. With 1K ohm potentiometer, wire rope misalignment 2° maximum at full stroke, relatively dust free environment, nylon jacketed wire rope on units with ranges 80" and less.

Use value from this column to indicate overall measurement range

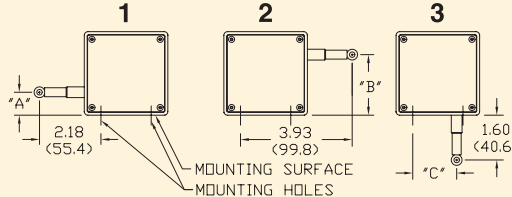
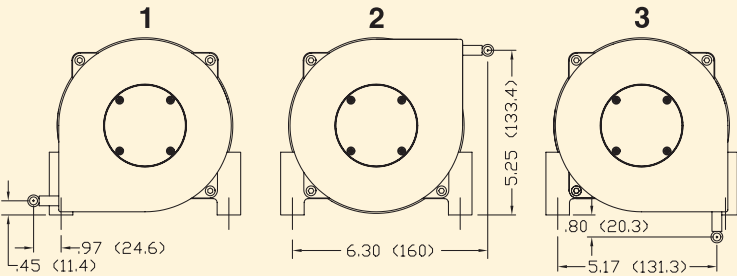


Check mark indicates available measurement range

TABLE 12

MEASUREMENT RANGE DESIGNATOR	STANDARD MEASUREMENT RANGES (in) (mm)		APPLICABLE SERIES			WIRE ROPE TENSION (NOMINAL) (oz) (N)		WIRE ROPE DIAMETER (in) (mm)		TRANSDUCER WEIGHT (lb) (Kg)		Product Photo
			HX-PA HX-PB HX-P420 HX-P510	HX-EP	HX-V HX-VP							
2	2	50	✓	-	✓	34	9.4	.016	0.4	2	0.9	
3	3	75	✓	-	✓	24	6.7	.016	0.4	2	0.9	
4	4	100	✓	-	✓	24	6.7	.016	0.4	2	0.9	
5	5	125	✓	-	✓	19	5.3	.016	0.4	2	0.9	
6	6	150	✓	-	✓	24	6.7	.016	0.4	2	0.9	
10	10	250	✓	✓	✓	34	9.4	.016	0.4	2	0.9	
15	15	390	✓	-	✓	24	6.7	.016	0.4	2	0.9	
20	20	500	✓	-	✓	24	6.7	.016	0.4	2	0.9	
25	25	640	✓	✓	✓	19	5.3	.016	0.4	2	0.9	
30	30	750	✓	-	✓	24	6.7	.016	0.4	2	0.9	
40	40	1000	✓	-	✓	24	6.7	.016	0.4	2	0.9	
50	50	1250	✓	✓	✓	19	5.3	.016	0.4	2	0.9	
60	60	1500	✓	✓	✓	24	6.7	.016	0.4	2	0.9	
80	80	2.0m	✓	✓	✓	21	5.8	.016	0.4	2	0.9	
100	100	2.5m	✓	✓	✓	36	10.0	.024	0.6	6.8	3.1	
120	120	3.0m	✓	✓	✓	36	10.0	.024	0.6	6.8	3.1	
150	150	3.8m	✓	✓	✓	36	10.0	.024	0.6	6.8	3.1	
200	200	5.0m	✓	✓	✓	36	10.0	.024	0.6	6.8	3.1	
250	250	6.3m	✓	✓	✓	36	10.0	.024	0.6	6.8	3.1	
300	300	7.5m	✓	✓	✓	36	10.0	.024	0.6	6.8	3.1	
350	350	8.8m	✓	✓	✓	36	10.0	.024	0.6	6.8	3.1	
400	400	10.0m	✓	✓	✓	36	10.0	.024	0.6	6.8	3.1	
500	500	12.5m	✓	✓	✓	36	10.0	.024	0.6	8.6	3.9	
600	600	15.2m	✓	✓	✓	36	10.0	.024	0.6	8.6	3.9	
800	800	20.3m	✓	✓	✓	36	10.0	.024	0.6	8.6	3.9	
1000	1000	25.4m	✓	✓	-	36	10.0	.024	0.6	12.0	5.4	
1200	1200	30.4m	✓	✓	-	36	10.0	.024	0.6	12.3	5.6	
1600	1600	40.6m	✓	✓	-	36	10.0	.024	0.6	14.1	6.4	
1800	1800	45.7m	✓	✓	-	36	10.0	.021	0.6	15.9	7.2	
2000	2000	50.8m	✓	✓	-	36	10.0	.021	0.5	16.3	7.4	

Specifications subject to change without notice

OPTION DESCRIPTIONS

OPTION	OPTION DESIGNATOR	DESCRIPTION																												
NYLON JACKETED WIRE ROPE <u>RANGES TO 80" ONLY</u>	N	Replaces standard stainless steel wire rope with Ø.018 nylon jacketed wire rope. This option increases wire rope life dramatically but may increase non-linearity by as much as ±.05% of full scale.																												
NYLON JACKETED WIRE ROPE <u>RANGES 100" TO 500" ONLY</u>	J	Replaces standard stainless steel wire rope with Ø.037 nylon jacketed wire rope.																												
ALTERNATE WIRE ROPE EXIT <u>RANGES TO 80" (2.0 m)</u>	1, 2, 3	<div><div><div><div>1</div><div>2</div><div>3</div></div><div></div></div><table><thead><tr><th>RANGE</th><th>"A"</th><th>"B"</th><th>"C"</th></tr></thead><tbody><tr><td>2", 10"</td><td>1.12 (28.4)</td><td>1.79 (45.5)</td><td>1.21 (30.7)</td></tr><tr><td>3", 15", 30"</td><td>.96(24.4)</td><td>1.95 (49.5)</td><td>1.37 (34.8)</td></tr><tr><td>4", 20", 40"</td><td>.80 (20.3)</td><td>2.11 (53.6)</td><td>1.53 (38.9)</td></tr><tr><td>5", 25", 50"</td><td>.64 (16.3)</td><td>2.27 (57.7)</td><td>1.69 (42.9)</td></tr><tr><td>6", 60"</td><td>.49 (12.4)</td><td>2.42 (61.5)</td><td>1.84 (46.7)</td></tr><tr><td>80"</td><td>.25 (6.4)</td><td>2.66 (67.6)</td><td>2.08 (52.8)</td></tr></tbody></table><p><i>Dimensions in brackets are millimeters</i></p></div>	RANGE	"A"	"B"	"C"	2", 10"	1.12 (28.4)	1.79 (45.5)	1.21 (30.7)	3", 15", 30"	.96(24.4)	1.95 (49.5)	1.37 (34.8)	4", 20", 40"	.80 (20.3)	2.11 (53.6)	1.53 (38.9)	5", 25", 50"	.64 (16.3)	2.27 (57.7)	1.69 (42.9)	6", 60"	.49 (12.4)	2.42 (61.5)	1.84 (46.7)	80"	.25 (6.4)	2.66 (67.6)	2.08 (52.8)
RANGE	"A"	"B"	"C"																											
2", 10"	1.12 (28.4)	1.79 (45.5)	1.21 (30.7)																											
3", 15", 30"	.96(24.4)	1.95 (49.5)	1.37 (34.8)																											
4", 20", 40"	.80 (20.3)	2.11 (53.6)	1.53 (38.9)																											
5", 25", 50"	.64 (16.3)	2.27 (57.7)	1.69 (42.9)																											
6", 60"	.49 (12.4)	2.42 (61.5)	1.84 (46.7)																											
80"	.25 (6.4)	2.66 (67.6)	2.08 (52.8)																											
ALTERNATE WIRE ROPE EXIT <u>RANGES 100" (2.5 m) and GREATER</u>	1, 2, 3	<div><div><div><div>1</div><div>2</div><div>3</div></div><div></div></div><p><i>Dimensions in brackets are millimeters</i></p></div>																												
NON-STANDARD POTENTIOMETER <u>APPLIES TO HX-PA & HX-VPA ONLY</u>	3, 4	<p>Non-standard potentiometer linearity is as follows:</p> <table><thead><tr><th>RANGE</th><th>LINEARITY</th></tr></thead><tbody><tr><td>5" and Below</td><td>±1.00% of full scale</td></tr><tr><td>10" to 25"</td><td>±0.50% of full scale</td></tr><tr><td>30" and above</td><td>±0.25% of full scale</td></tr></tbody></table> <p>Note: This option is subject to potentiometer availability.</p>	RANGE	LINEARITY	5" and Below	±1.00% of full scale	10" to 25"	±0.50% of full scale	30" and above	±0.25% of full scale																				
RANGE	LINEARITY																													
5" and Below	±1.00% of full scale																													
10" to 25"	±0.50% of full scale																													
30" and above	±0.25% of full scale																													
REVERSED OUTPUT	R	Output is at a maximum when wire rope is fully retracted. Output decreases as wire rope is extended. Does not apply to velocity signal.																												
IP-68, (NEMA 6) CAPABILITY	2	<div><p>Connector is replaced with a bulkhead fitting and a designated length of urethane jacketed, shielded, twisted pair cable. Retraction mechanism and electrical components are sealed to IP-68, (NEMA 6) capability.</p></div>																												
CORROSION RESISTANT CONSTRUCTION	3	<p>All external anodized aluminum parts of transducer are replaced with stainless steel and corrosion resistant plastic. Transducer is sealed to IP-68 (NEMA 6) capability. Urethane jacketed, shielded, twisted pair cable exits unit. No connector on unit.</p> <div></div>																												

DIMENSIONAL INFORMATION

HX SERIES – RANGES TO 80" (2 m)

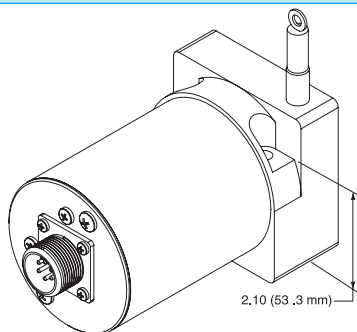
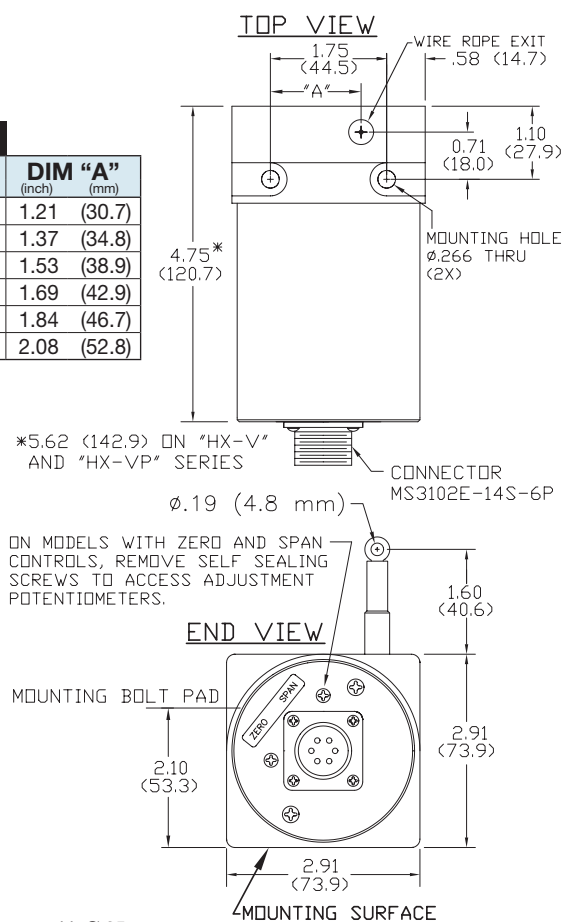


FIG. 1

TABLE 13

RANGE	DIM "A"	DIM "A"
(inch)	(mm)	(mm)
2", 10"	1.21	(30.7)
3", 15", 30"	1.37	(34.8)
4", 20", 40"	1.53	(38.9)
5", 25", 50"	1.69	(42.9)
6", 60"	1.84	(46.7)
80"	2.08	(52.8)



NOTES:

1. Transducer mounts with Ø.25 or M6 Socket head cap bolts.

Dimensions in brackets are millimeters

TABLE 14

RANGE	DIM "A"	DIM "B"
(inch)	(mm)	(mm)
Ranges to 800"	7.70 (196)	3.80 (97)
1000" to 2000"	11.0 (280)	5.60 (142)

NOTES:

1. Transducer mounts with Ø.50 or M12 socket head cap bolts.
2. Dimension "C" is the cable offset that occurs as the cable is extended from the transducer. For "C" in inches, $C = .0016 \times E$ where E = extension in inches. For "C" in millimeters, $C = .0016 \times E$ where E = extension in mm.

HX SERIES – RANGES GREATER THAN 80" (2 m)

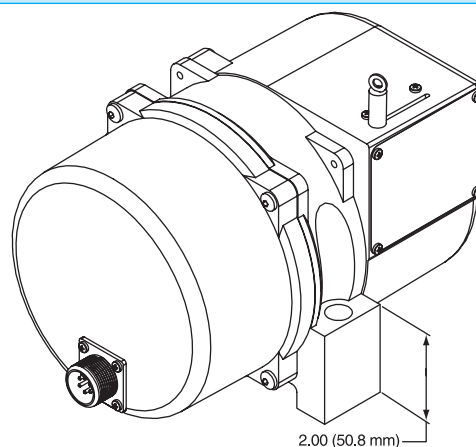
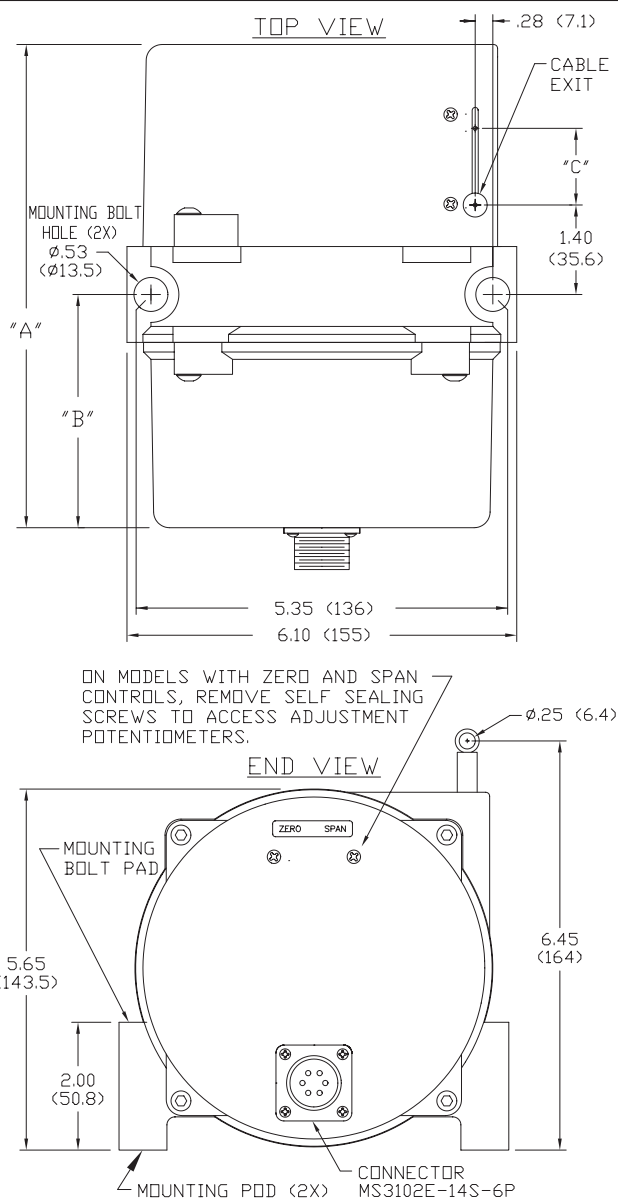


FIG. 2



Dimensions in brackets are millimeters