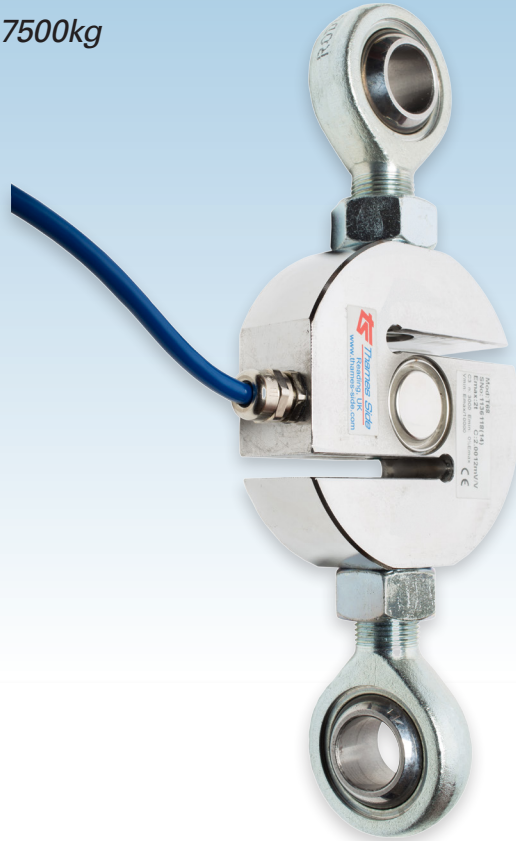


S-TYPE STAINLESS STEEL LOAD CELL FOR COMMERCIAL WEIGHING

capacities 250kg - 7500kg



Upper and lower rod end bearings are optional items

The T68 stainless steel S-type tension load cell is ideal for 'commercial' weighing, due to its approval to OIML R60 3000 divisions (C3). Its fully welded and hermetically sealed construction ensures total environmental protection to IP68 / IP69K, coupled with excellent long term signal stability and performance. Additionally, it is supplied with a high durability polyurethane cable and the option of rod end bearings, making it the ideal S-type load cell.

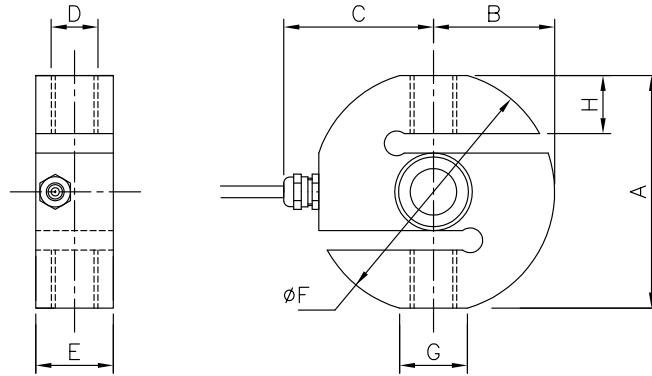
The T68 load cell is available with optional ATEX certification for all Gas and Dust zones. The ATEX certification for dust zones 20, 21 and 22 does not require safety barriers, which saves substantial cost.

An optional high temperature variant for continuous operation in environments up to 150 °C is also available. For applications in aggressive environments where stress corrosion or acid attack is a potential problem, a special Parylene coating can be specified as an option

- Stainless steel load sensor
- 2 mV/V rationalised output
- Fully welded and hermetically sealed to IP68 / IP69K
- 5 year warranty
- Suitable for use in tension, compression or a bi-directional manner
- Optional rod end bearings available
- Excellent long term stability
- Approved to 3000 divisions (C3) OIML R60 Class C
- High durability Polyurethane cable
- Optional  and high temperature versions

T68

technical specification...



T68 Load Cell ATEX Certification

Code	Temperature Class	Parameters	Application
II 1 GD Ex ia II CT4..T6 Ga IP68T85°C Ex ia IIIC T135°C T85°C Da Ex ta IIIC T85°C Da	T4	Pi = 1.3W	Gas Zones 0, 1, 2 with safety barriers Dust Zones 20, 21, 22 without safety barriers
	T5	Pi = 0.8W	
	T6	Pi = 0.53W	

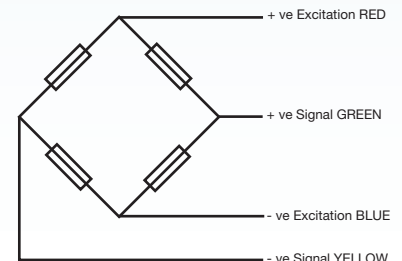
Dimensions

Capacity (kg)	250 -500	1000 -2000	5000	7500
A	70	95	120	120
B	37.5	50	62.5	62.5
øC	50	60	72.5	72.5
D	M12 x 1.75P	M20 x 1.5P	M24 x 2P	M24 x 2P
E	24.5	30	40	56
øF	75	100	125	125
G	26.9	31.2	35	35
H	15	26	30	30

T68 Load Cell

	Load cell specification	Units	
Load Cell Capacities (E_{max})	250, 500, 1000, 2000, 5000, 7500	kg	
Rated Output (S_n)	2.0	mV/V ± 0.1%	
Accuracy Class	3000*	n.OIML	
Combined Error	< ± 0.017	% S _n	
Non-repeatability	< ± 0.015	% S _n	
Creep (30 minutes)	< ± 0.016	% S _n	
Temperature Effect on Zero Balance	< ± 0.002	% S _n / °C	
Temperature Effect on Span	< ± 0.0012	% S _n / °C	
Compensated Temperature Range	-10 to +55	°C	
Operating Temperature Range	-40 to +95	°C	
Safe Service Load	150	% E _{max}	
Ultimate Load	200	% E _{max}	
Zero Balance	< ± 2.0	% S _n	
Input Resistance	400	Ω ± 20	
Output Resistance	350	Ω ± 3	
Insulation Resistance	>5000	MΩ @100V	
Recommended Supply Voltage	5-15	V	
Maximum Supply Voltage	15	V	
Environmental Protection to EN 60529	IP68; IP69K		
Cable Length	5	m	
Cable Material	Polyurethane		
Nominal Shipping Weight	250, 500kg	1	kg
	1000, 2000kg	2	kg
	5000kg	4	kg
	7500kg	5.5	kg

All dimensions are in mm



Electrical Connections

Via 4 core, 5.7mm diameter, screened polyurethane cable.
Screen not connected electrically to load cell.

* For capacity range 500kg - 5000kg

DISTRIBUTED BY:

DSPM Industria
sensori & trasduttori

Via Paolo Uccello 4 - 20148 Milano
Tel +39 02 48 009 757 Fax +39 02 48 002 070
info@dspmindustria.it www.dspmindustria.it

THAMES SIDE SENSORS LTD

Issue: T68.02.17



Our policy is one of continuous product enhancement. We therefore reserve the right to incorporate technical modifications without prior notification.

