

Technical data

Laser	Measuring range: z-axis 60..120 mm, y-axis 150 mm / laser class: 3R. Measurement resolution 0.02 mm, measuring accuracy +/- 0.05 mm, relative to measuring standard.
Measuring cycle	9s (seconds), fully automated procedure.
Battery pack	Li-ion battery for 4h mobility, including quick charger.
Profile memory	Internal profile memory for 50 measurements, each with preliminary and subsequent measurement.
Monitor	Rich-colour, 10.4" TFT monitor with automatic brightness control (resolution: 640 x 480).
Keyboard	Mode selection, navigation and zoom joystick, main menu, cursor on/off, yes/no selection, measuring cursor, 3 softkeys.
Digital templates	<ul style="list-style-type: none"> Grooved rails: Ri59, Ri60, Ri60N, SEI35G, SEI35GP, SEI41GP, NP4, NP4a Vignoles rails: S41, S49, S54, UIC60, SBB1 (these 5 also rotated 1:40), VST36, SBBIV and track correction profile. Other templates can be loaded later via a Compact Flash card.
Extension arm	Lightweight construction with single-handed operation of folding mechanism. Available in the gauges 1000/1100/1435 and 1458 mm. Special constructions on request.
RailJob software	The check points can be specified on a PC and loaded to the Railmonitor as a measuring program.
RailCAD software	Measurement evaluation on a PC, drafting of PDF reports, measurement archiving.
RailView software	Quick view and report generation of the profile data on a PC.
Transport	Transport in aluminium case, protective covering for outdoors, shoulder strap for weight relief.
Housing	Splash-proof housing, 7.6 kg, overall size 480x200x100mm without folding arm and centring support.
Options	*Gauge measurement, *banking, *grinding depth, *GPS, *rail corrugation module, export formats *DXF, *PDF, *HTML, *software updates on CF card.

*not yet available

Contact **DSPM Industria**[®]
sensori & trasduttori


Via Paolo Uccello 4 20148 Milano
Tel +39 02 48 009 757 Fax +39 02 48 002 070
info@dspmindustria.it www.dspmindustria.it


Railmonitor - LITE

... a High  LITE in rail analysis




Rail measurements made quick and easy

 **New and unique non-contact laser technology**

 **Keeps you in control of process and quality**
(digital templates, error beam)

 **Vignoles rails, grooved rails, switches,**
*gauge, *banking, *grinding depth

 **Complete with zoom and measurement functions**
(e.g. determine edge steepness, measure chamfer length)

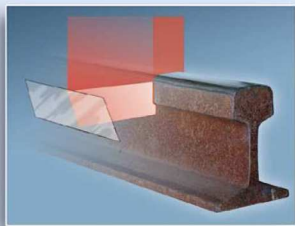
 Schmid Engineering AG

Schmid Engineering AG
Mezikonerstrasse 9
CH-9542 Münchwilen
Switzerland

www.railmonitor.com

Selling:


Dr. D. Wehrhahn
Measuring Systems for Quality Assurance
Hildesheimer Straße 140 D-30173 Hannover
Phone +49 511 51 26 65 Mail info@drwehrhahn.de
Fax +49 511 52 21 52 Web www.drwehrhahn.com



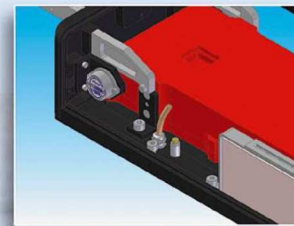
Head height and grinding depth



None contact gauge measurement



None contact web/base of the rail measurement



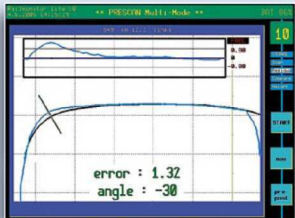
Electronic cant measurement



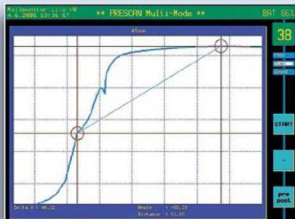
Measurement report, reloading of additional rail references and software updates via removable media (CF-Card)



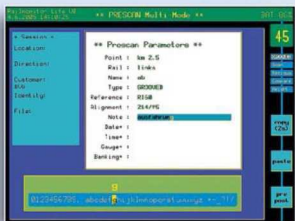
Extension connector for future options



Variance comparison with digital rail references and interactive error beam



Comfortable measurement of individual rail parameters



On site measurement specification



Job scheduling and quality verification on an office PC

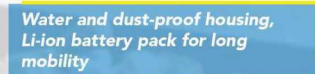
Railmonitor



Rigid, easily detachable folding arm with insulated support. With gauge measurement



Hinged carrying handle with locking function



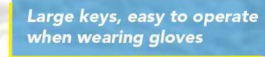
Water and dust-proof housing, Li-ion battery pack for long mobility



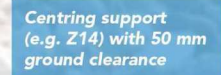
Large VGA colour monitor with brightness adjustment for daytime and night-time operation



Navigation through measurements and views



Large keys, easy to operate when wearing gloves



Centring support (e.g. Z14) with 50 mm ground clearance

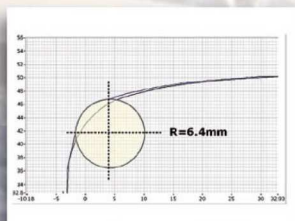


Reproducible laser measurement



Zoom joystick and cursor

- Mode selection
- Single mode : single measurements (process control)
 - Multi-mode : several preliminary and subsequent measurements (Q-verification) with text report



Determination of the minimal radius on the rail



Switch measurement

Via Paolo Uccello 4 20148 Milano
Tel +39 02 48 000 757 Fax +39 02 48 002 070
info@dspmindustria.it www.dspmindustria.it